

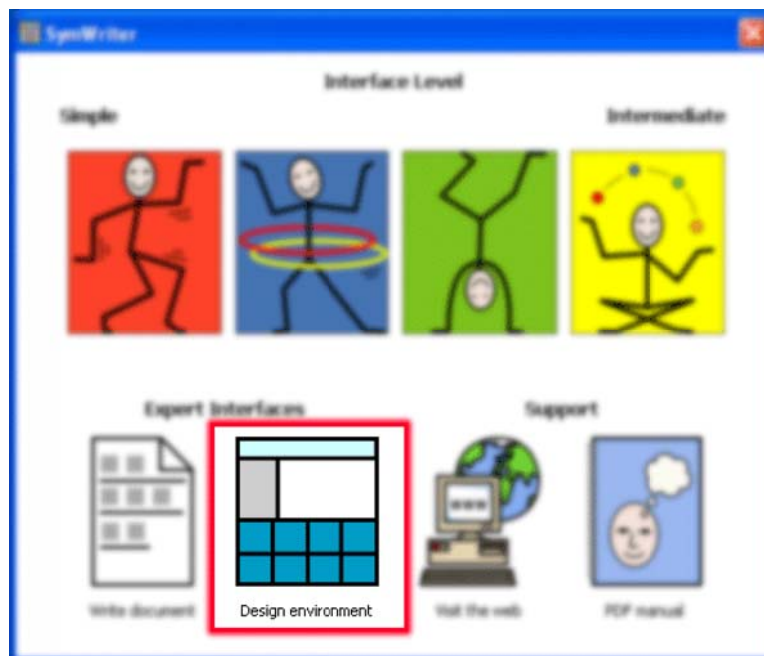
Importing SymWriter Activities

You must update your copy of SymWriter to version 1.1.6845 for the following to work successfully. The FREE download can be found at:
<http://www.widgit.com/support/symwriter/download/>

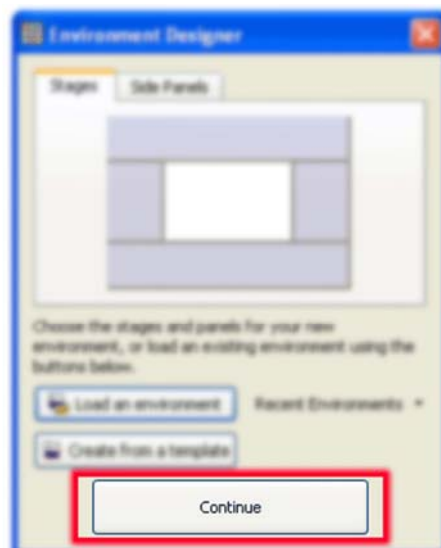
Download the activity from the Widgit website, and save it to an area on your computer you can easily find again later. Or alternatively if you cannot download to the computer you have SymWriter installed on, download the environment to a memory stick.

Once the file has downloaded, open SymWriter.

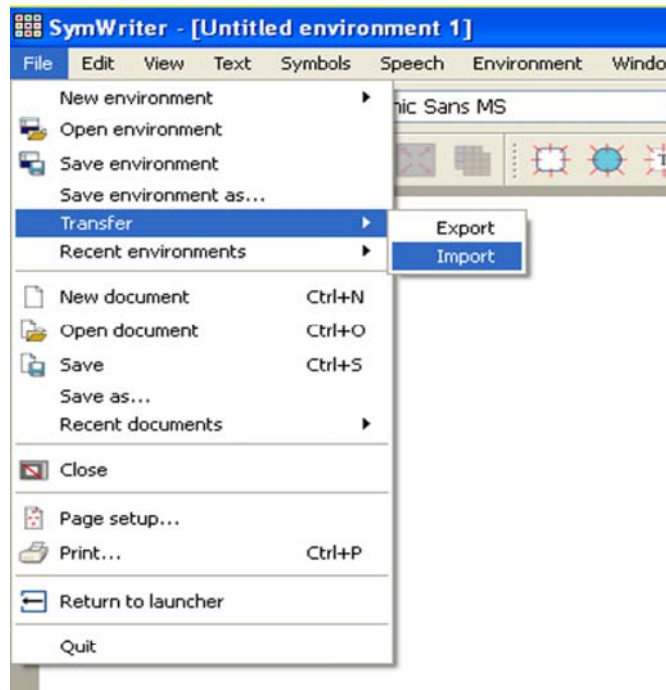
From the launcher screen of SymWriter, select the **'Design Environment'** button.



When the dialogue box pops up, click **'Continue'**

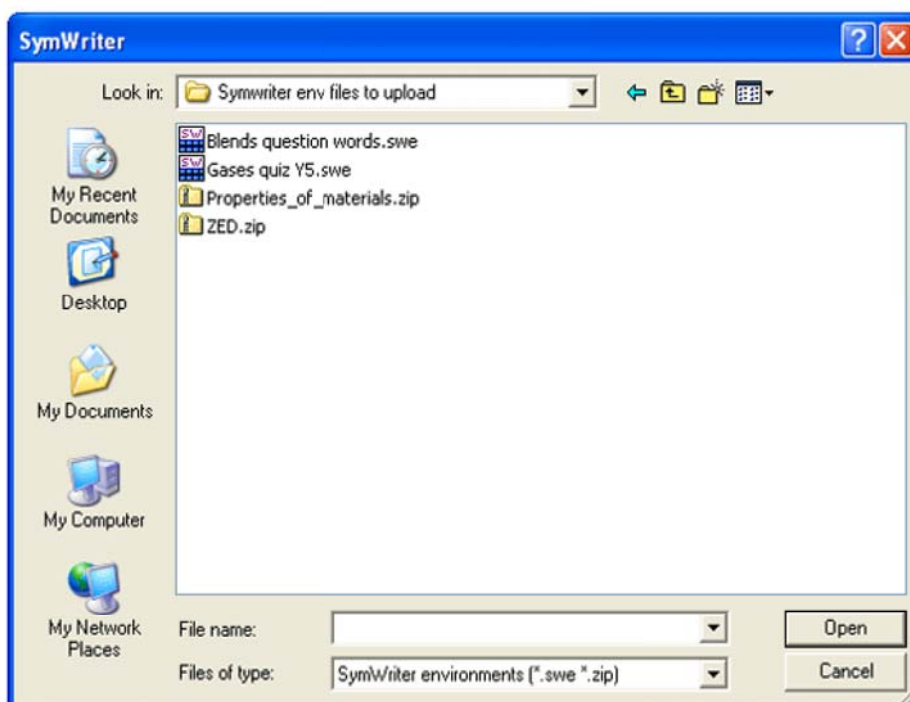


Once you have done this click on the **'File'** menu, and click **'Transfer'** then click **'Import'**.



After you have clicked import a dialogue box will appear, it will allow you to navigate to the place that you saved the download to.

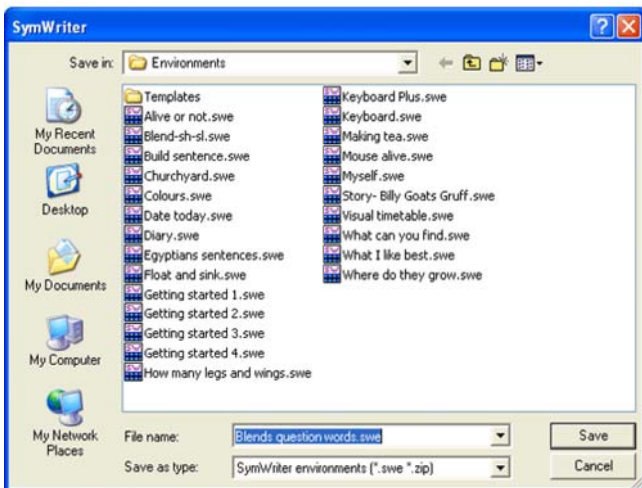
When you have found that area, you will need to choose the environment file, or the group of environment files. A single environment file has .swe as its file extension and a group of environments will have .zip as their file extension.



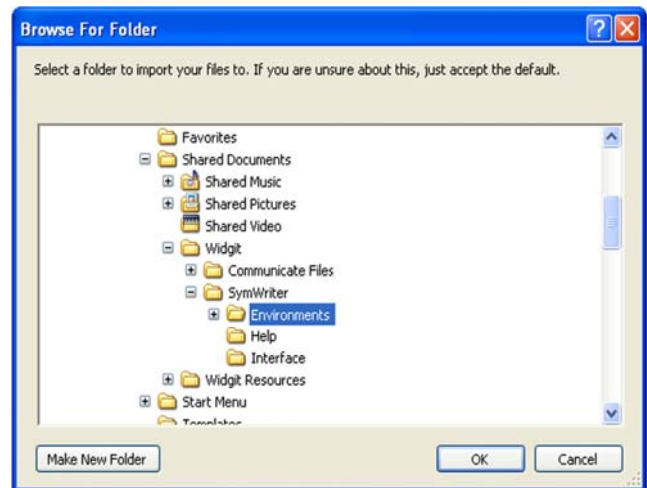
You will then be asked where you want to save the environments, usually SymWriter will go straight to the area that your environments are normally saved in.

If your computer is a standalone machine that is not on network, the area will be:
 C:\Documents and Settings\AllUsers\Documents\Widgit\SymWriter\Environments

Once you have chosen the area you want to save your environment in, save the file.



View for saving a single environment



View for saving a pack of environments

The environment will then be on your machine and listed with the other environments that you have. Alternatively if you have downloaded a pack of environments, the newly installed environments will automatically be placed in a folder, with the same name as the pack, in your environments folder.

