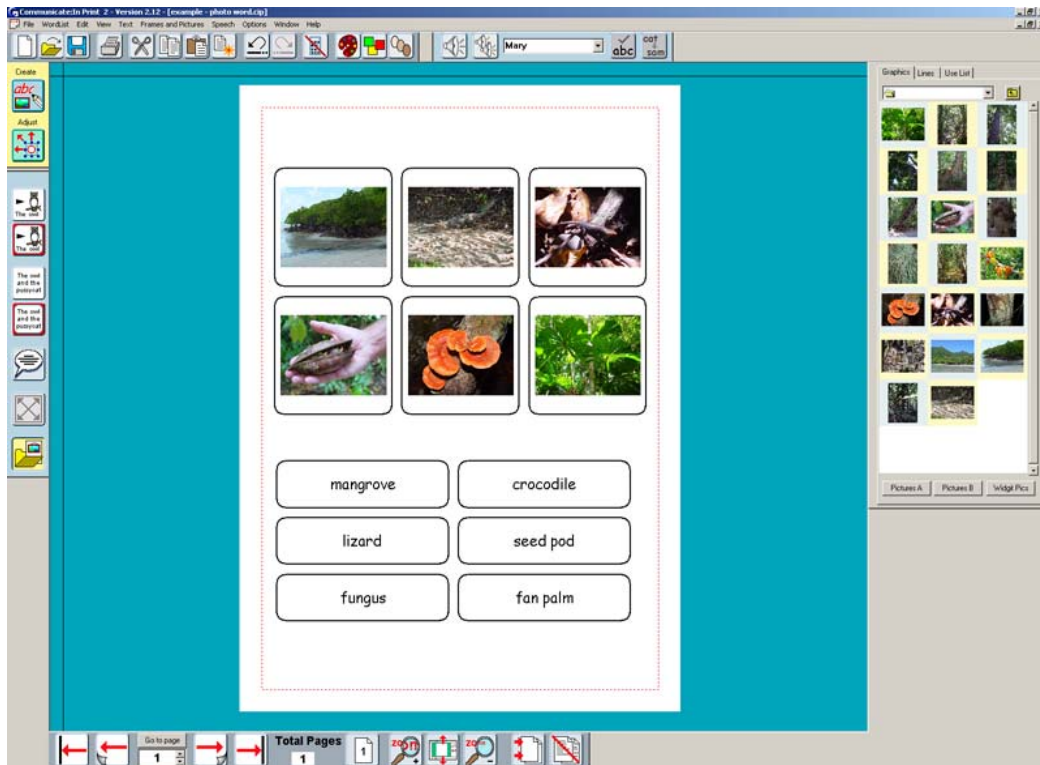


## **Communicate: In Print** **Photo to Word Matching Cards**

This will make sheets with word cards and photo cards ready to print and cut up for a labelling activity.



The page has two tables:

Open a New document.

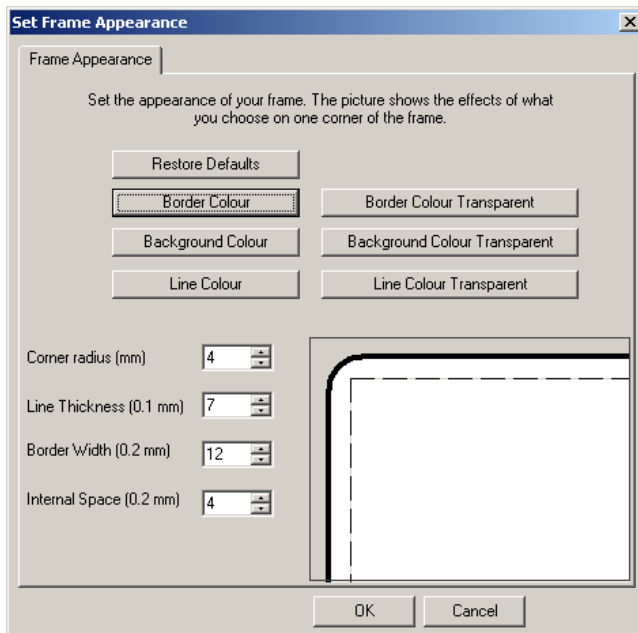
## 1. Make the base frame for the top table



Make a single frame at approximately the size you want. Don't forget that right clicking in it can switch the drag points on and off.

From **Frames and Pictures**, select **Appearance**

A common preference is:



Set the basic properties for this frame:



**Centre justify** and



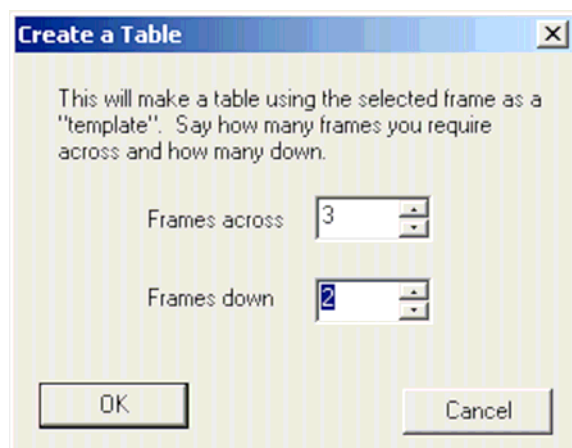
**centre vertically**

Do this before you create the table, then all the cells in the table will have the same properties.

## 2. Make the first table:

From **Frames and Pictures**, select **Make a table...**

This is the table for the photographs.



### 3. Make the base frame for the bottom table.



Make a text only frame at an approximate shape for the text labels.

### 4. Make this into a table. Do this as in 2 above

When the table is made, notice that the tables have yellow drag points and all the cells change size together. To get rid of the drag points, right click in the table – then type the words into the Text cells.

Arrange these tables on the page to the positions and size you finally want. Right click to get the drag points back. (It is also possible to treat each cell separately – but we do not need this here – see the full documentation, or ask if you want to know how to do this. It is quite easy).

### 5. Adding photos to the frames:



Open the graphics browser, and navigate to the folder with the pictures you want to add.

Click on the picture you want.

Click in the graphics frame on the page.