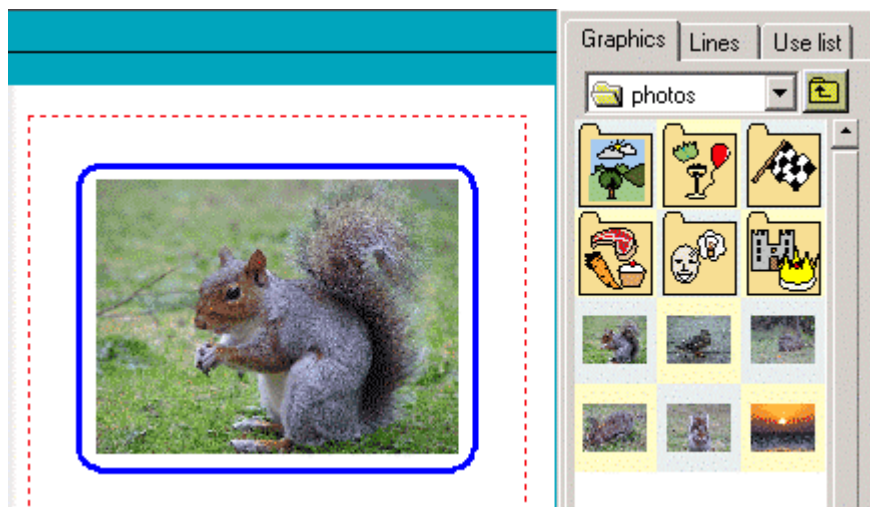


Communicate: In Print

Adding an image to a frame

You may want to have a frame that just contains a picture.

In create mode, create the frame using the **Fixed** writing button. Click on the picture you want in the graphics panel and then click again in the frame. The picture will automatically be sized as large as possible to fill the frame, whilst retaining its original aspect ratio. Re-sizing the frame will also re-size the picture in it.



Adding another picture to this frame will replace the original with the new one. To delete a picture in a frame use the delete key. This will leave you with the empty frame.