



Installing SymWriter



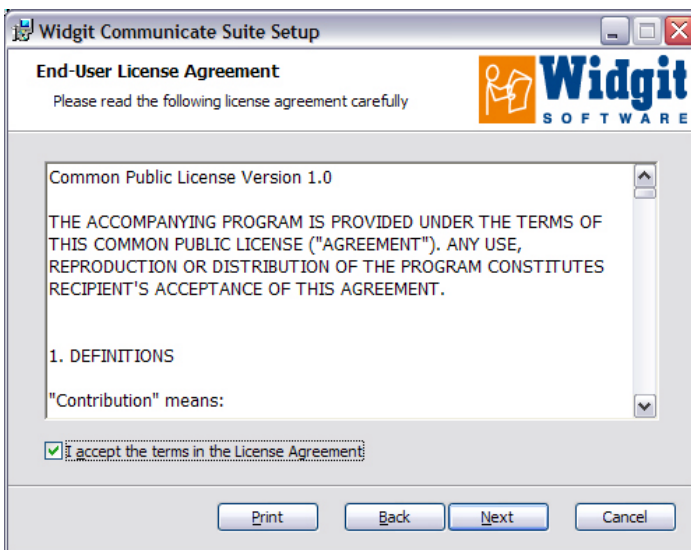
SYMWR14

Log onto the computer with Administrator privileges and insert the SymWriter CD. The installation should begin automatically. If it does not, browse to the CD and click on 'setup.msi'.

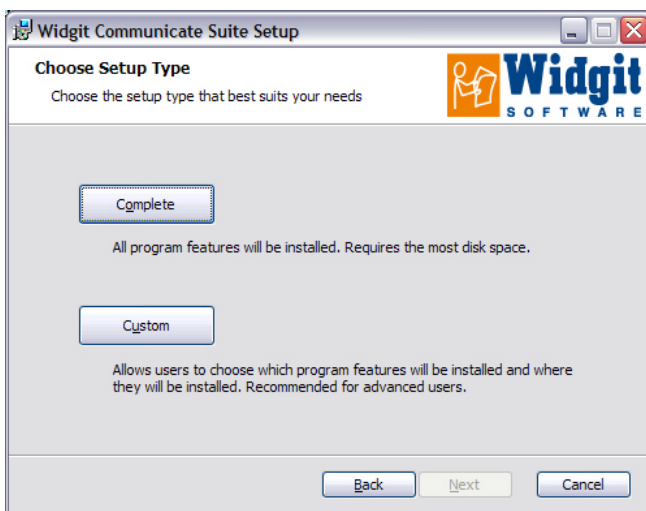


You should see the 'Welcome' dialog when the installation begins.

After a moment the 'Next' button will become available. Click 'Next' to continue.



You will be asked to accept the licence terms for the spelling dictionaries that we provide with the program. Click 'I accept' then 'Next' to continue.



You will be asked which type of setup best suits your needs.

Custom installations are supported for the benefit of network administrators and for users who wish to specify non-standard locations for SymWriter files.

The majority of users will not need to perform a custom installation.

Select the 'Complete' option.



The installation is ready to begin. Click 'Install' to continue.

It may take several minutes for all of the files to be installed.

Before installation completes you may be shown the SymWriter activation wizard. You will need your serial key provided with your copy of SymWriter in order to activate the program. For help with this refer to the 'Activating SymWriter' sheet.



Once SymWriter has completed installing, click on the 'Finish' button to exit.

Further information

Please visit <http://www.widgit.com/support/symwriter> for more information.

Or contact support@widgit.com 01926 333680