

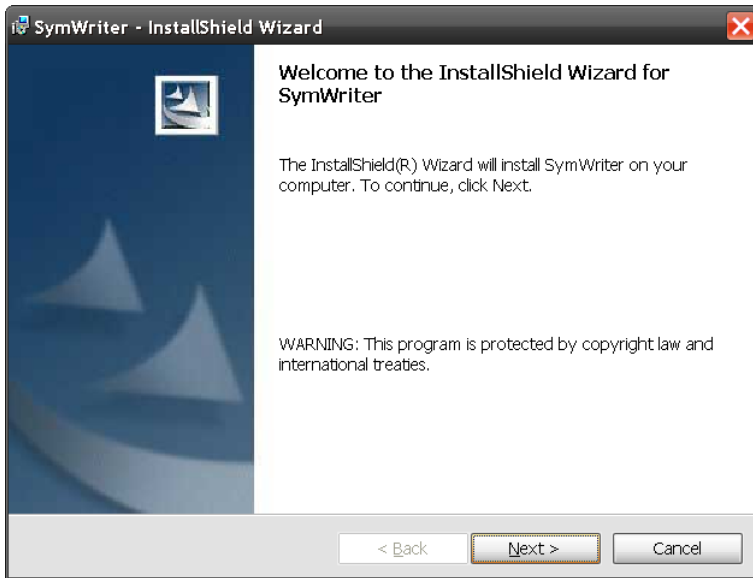


## Installing SymWriter



SYMWR14

Log onto the computer with Administrator privileges and insert the SymWriter CD. The installation should begin automatically. If it does not, browse to the CD and click on 'setup.exe'.

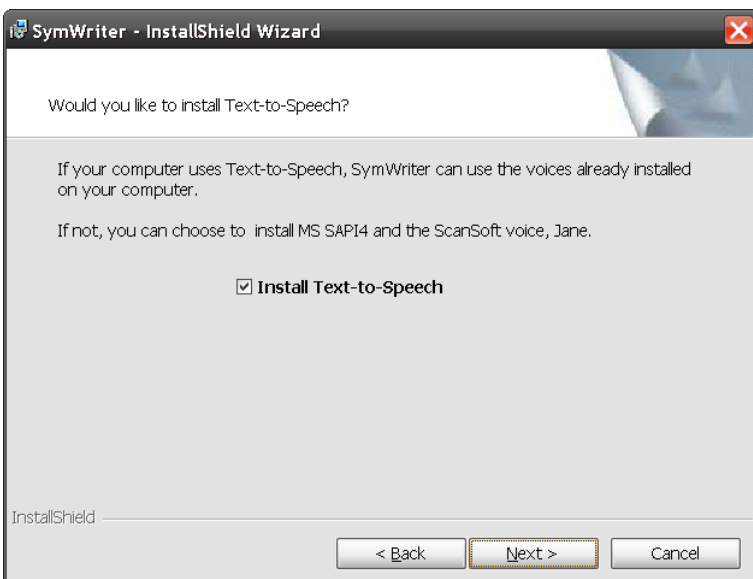


You should see the 'Welcome' dialog when the installation begins.

Click 'Next' to continue.

You will be asked to enter your name and organisation (Not required).

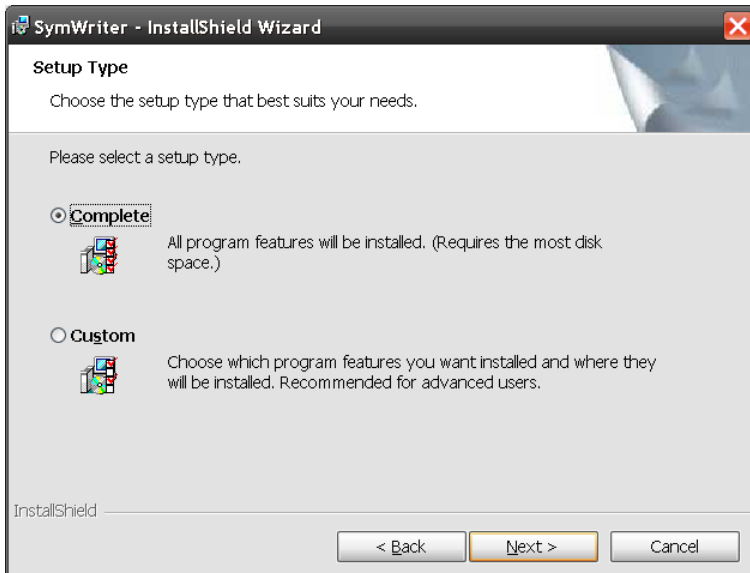
Click 'Next' to continue.



You will be asked if you would like to install Text-to-Speech. If there is already a speech engine installed on your computer, you will not need to install the speech engine that is included with SymWriter.

If there is already a speech engine installed on your computer, uncheck the 'Install Text-to-Speech' box.

Click 'Next' to continue.

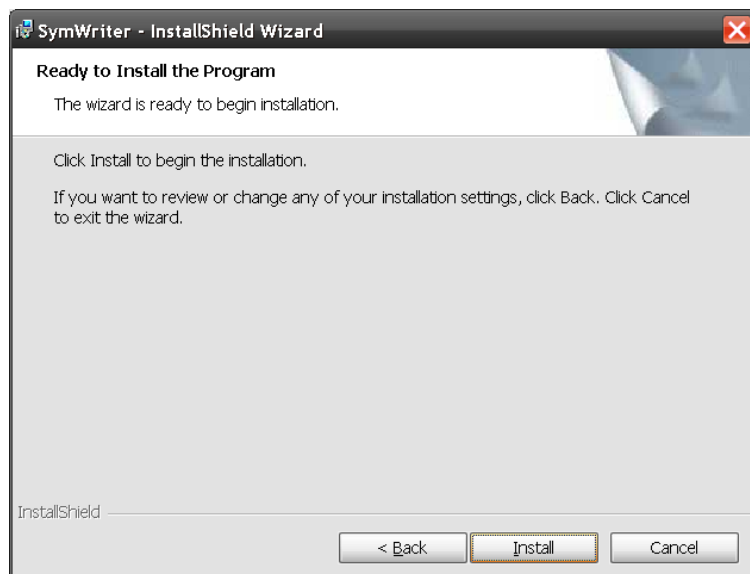


You will be asked which type of setup best suits your needs.

Custom installations are supported for the benefit of network administrators and for users on networks who may have programs, documents or settings stored in a folder that the installation cannot detect automatically.

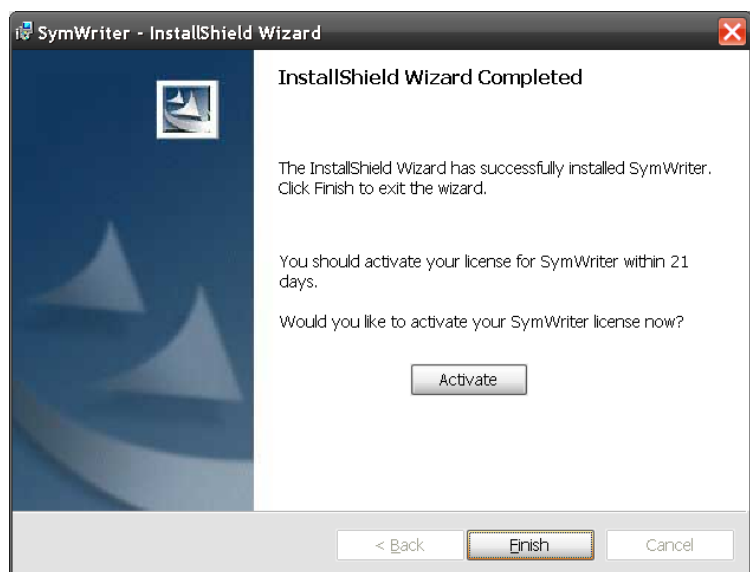
The majority of users will not need to perform a custom installation. Select the 'Complete' option.

Click 'Next' to continue.



The installation is ready to begin. Click 'Install' to continue.

You will see smaller dialogs appear as the files are being installed. It may take several minutes for all of the files to be installed.



When the installation is complete, you will be reminded that your SymWriter license should be activated within 21 days.

If you would like to activate your SymWriter license now, click the 'Activate' button to launch the 'License Manager' program (see 'Activating Your SymWriter License'). You can find your license number on the printed license in the SymWriter pack or on the CD wallet.

Click 'Finish' to exit the installation.

## Further information

Please visit <http://www.widgit.com/support/symwriter> for more information.

Or contact [support@widgit.com](mailto:support@widgit.com) 01926 333680