



To install this software onto a network, you should perform an administrative install. This will allow you to create a pre-configured installer that contains your preferred folder locations, and your serial number.

Before creating the administrative install, you should make sure you know your serial number, the proxy server settings for your network, and the network locations where you want to install the application files.

## Folder Information

The program needs to know five paths. These are:

### Program Files

The Program Files will always be installed into the 'Program Files' directory of the target machine. This is not configurable.

### Shared Application Data

The "Shared Application Data" folder contains files such as wordlists, which are not normally visible directly to users of the program. They should be readable by all users of the program, and writeable by 'Power Users' (for example, teachers as opposed to students, on a school network.)

The default location for these files is CSIDL\_COMMON\_APPDATA. On a stand-alone machine, this would normally be "[C:\Documents](#) and Settings\All Users\Application Data"

### Shared Documents

The "Shared Documents" folder contains files such as environments, which will be loaded by users of the program. They should be readable by all users of the program, and writeable by 'Power Users'.

The default location for these files is CSIDL\_COMMON\_DOCUMENTS. On a stand-alone machine, this would normally be "[C:\Documents](#) and Settings\All Users\Documents"

### User Application Data

The "User Application Data" folder contains the application settings for each user. This area must be writeable by all users of the program. Ideally, it should be different for each logged-on user so that they can each have their own settings.

The default location for these files is CSIDL\_APPDATA. On a stand-alone machine, this would normally be "[C:\Documents](#) and Settings\\Application Data"

### User Documents

The "User Documents" folder contains the documents that each user will create. This area must be writeable by all users of the program. Ideally, it should be different for each logged-on user so that they can each have their own documents.

The default location for these files is CSIDL\_DOCUMENTS. On a stand-alone machine, this would normally be "[C:\Documents](#) and Settings\\Application Data"

## Installing Network Files

When you are creating the administrative install, if your "Shared Application Data" and/or "Shared Documents" are on a network share, the files that are needed for these locations will be copied. This is to prevent the files being reinstalled multiple times when the program is installed on the target machines.

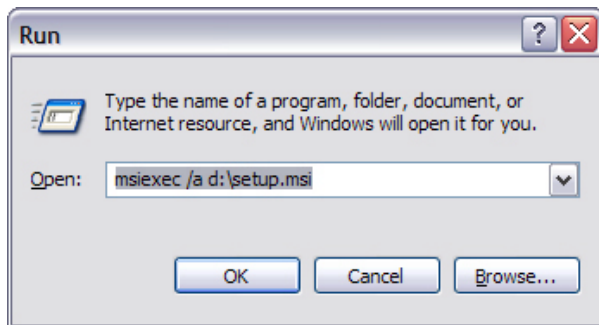
It is therefore important that when creating the administrative install, you do so as a user that has write access to these directories.

## Software Activation

Once the software is installed, it must be activated. You will have a serial number supplied with the software that you can use to perform activations. If you are installing the software on a network, your serial number will be able to activate many installations of the program.

The software activates itself automatically during installation on the target machine, using the serial number you provide when you create the administrative install. This requires a connection to the internet. If your network has a proxy server, you will need to supply the details of this when you create the administrative install, so that the target machines can connect to the activation server.

## Creating the MSI



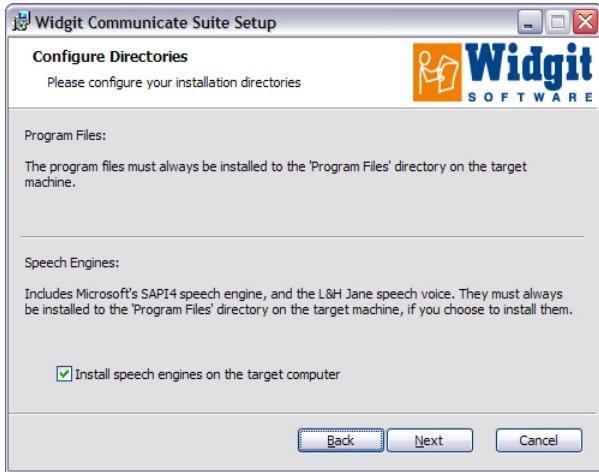
Insert the application CD. Go to 'Run' from the 'Start' menu, and enter "msiexec /a [d:\setup.msi](#)". (If your CD-Rom drive has a different drive letter than D, make sure you type this instead.)

The administrative installation will begin. After a pause (which may be some time on some computers). Click 'Next' on the first dialog to continue.

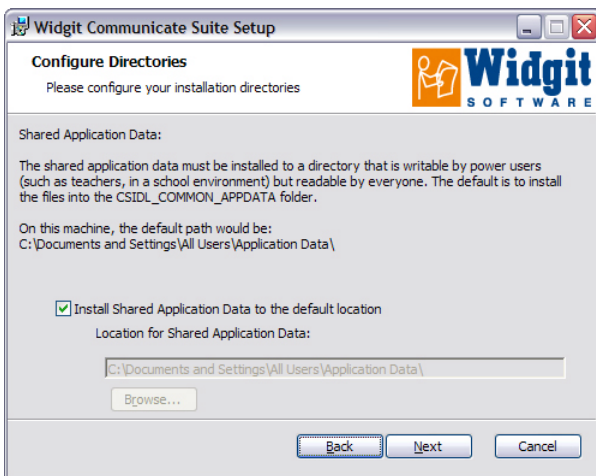


On the next screen, you will be prompted for a location to create your installation image. This is the setup msi file (and other supporting files) that the target machines will use to perform their own installation. Browse to a location on your network where you want to create the files.

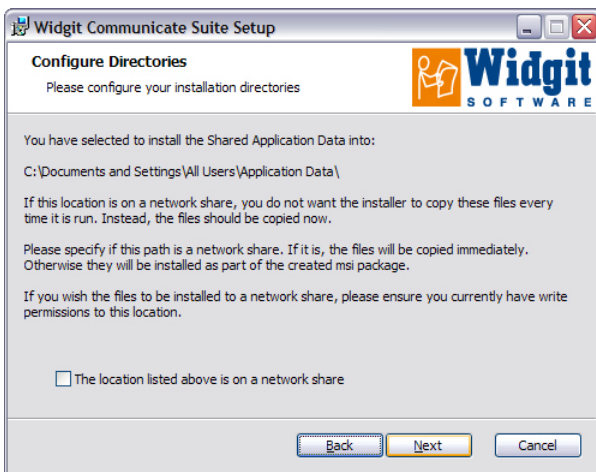
**Remember: An administrative installation will not install the program. It will save your installation choices and use them to create a new MSI installer.**



On the following screen you will be prompted on whether you want to install the SAPI 4 voices on each target machine.

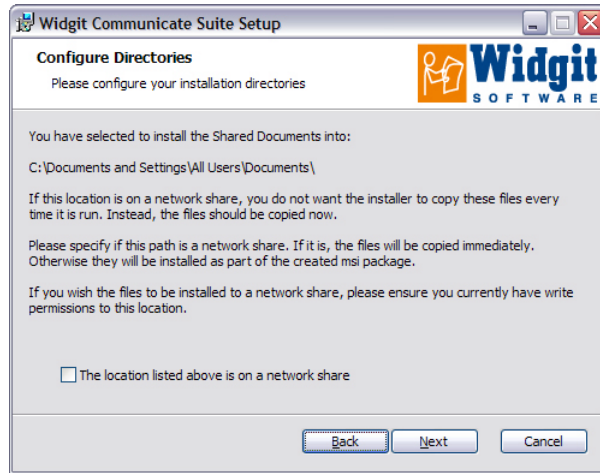
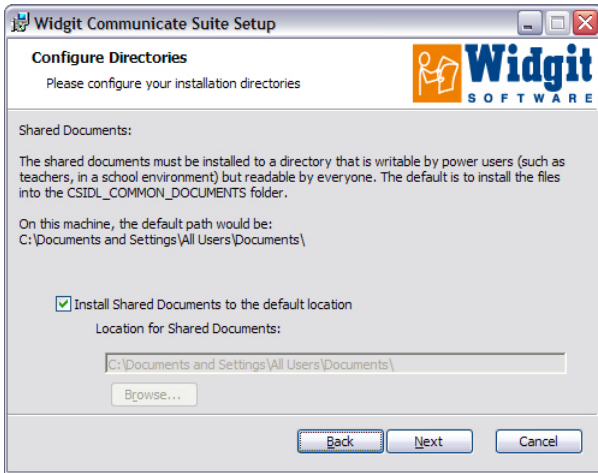


On the next screen, you will be asked for the location of the "Shared Application Data" folder. Enter the full path to the folder you have chosen, as it would be seen by the target machines.

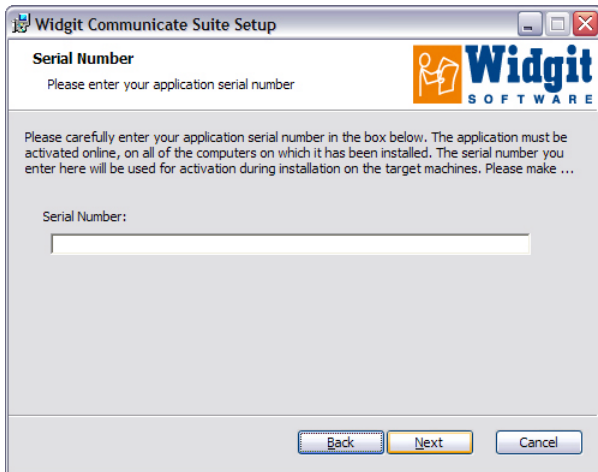


On the following screen, you are asked if you are installing to a network share. If you check the box to indicate that this is the case, the files will be automatically copied to the correct place, and they will *not* be installed when you install the created MSI on the target machines.

These two steps are then repeated for the "Shared Documents" folder.



The next two screens will prompt you for the location of the "User Application Data" and "User Documents" folders. You are not asked whether this is a network location, as there are no files installed to these locations by the installer. Files are created in these areas when the program is run.



On the next screen you are prompted for your serial number. This serial number will be used for automatic activation when the program is installed on the target machines.

**Please ensure that you have sufficient activations available on your serial number, for all the computers that you wish to install the software on.**



Finally you will be asked for your proxy server details. Please enter them carefully, as if they are incorrect the program will fail to activate on the target machines.

Copying the files and creating the MSI installer will take several minutes.

When the files have been copied and the MSI has been created, you can deploy the MSI across your network or run it on as many clients as you have a license for.

If you have any questions, please contact support.

Widgit Technical Support,  
01926 333680  
support@widgit.com