

## Modes and Resolutions Explained

## Help Sheet 1

A computer screen is made up of a large number of dots called 'pixels'. Your computer display can be set to work in different 'resolutions' with larger or smaller density of pixels.

The resolution will affect how much space each 'window' on the screen appears to take up. This particularly affects screen layouts where grids are used alongside writing documents. The examples provided with the software have been created in three different settings NT2000, Hi-res and Lo-res.

Computers running NT, Windows 2000 or XP do not have to worry about the screen resolution, and when using example files from Writing with Symbols 2000 should always select example files from the folders labelled **NT2000**.

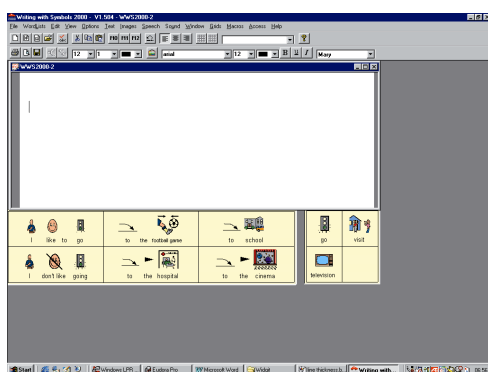
However computers working in Windows 95, 98 or ME have screen displays that are dependent upon the resolution setting of the computer. The most common resolutions are 800 x 600 (referred to below as **lo-res**) and 1024 x 768 (referred to below as **hi-res**) in which case you should select the folder that is appropriate to the resolution you are working in.

**Hi-res** - these are made for computers operating in 1024 x 768 resolution. This gives you the maximum screen area, as the standard A4 writing page does not fill the screen width, and you can fit a grid or send window down the side of the document. This is really useful if you want to display more than one grid at the same time.

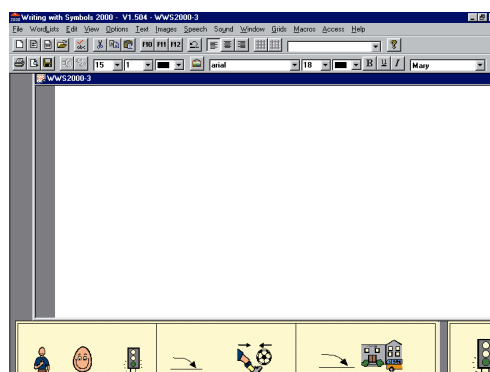
**lo-res** - these are made for computers operating in 800 x 600 resolution. In this resolution the standard A4 page almost fills the full width of the screen.

WWS2000 does not sensibly operate in a resolution lower than 800 x 600.

If an example environment does not fill the whole screen, or seems not to fit onto the screen, this is an indication that you have opened the wrong set of examples for your screen resolution. For example:

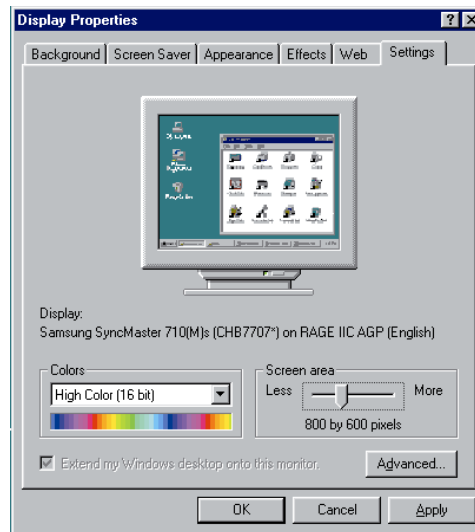


Your computer is set to work in **hi-res** mode and you open the **lo-res** examples. You will have an empty space on the right and below the grids in the environment. To enlarge the windows to fill the screen choose the examples from the **hi-res** folder.



You cannot see all of the grids in an environment. This is an indication your computer is set to work in **lo-res** mode but you have chosen a **hi-res** example. You need to open the example in the **lo-res** folder.

To see the current settings of your computer, or make any changes you need first to place the mouse pointer on the background of your desktop and click with the **RT** mouse button. Select **Properties** from the pop-up menu displayed. Then choose the **Settings** tab. A slide bar on the right of the window will show you the current resolution and allow you to change it.



It is also a good idea to choose **Small Fonts**. Sometimes this is indicated by a box on the left of the Settings tab window. In the case shown above it does not appear. In this case you can click on the **Advanced** button and you will see an item where you can select **Small Fonts**.

When working within WWS2000 you will normally stay in one particular screen resolution. If someone has changed the screen resolution of the computer you can use the above method to re-set it.