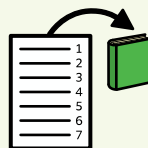




Wimbledon Pack



Contents

Books

Wimbledon symbol book

Activities

Colouring (x2)

Hidden words

Quiz (multiple choice and true or false)

Read and draw

Roll, add and colour

Size ordering

Tennis Grand Slams world map

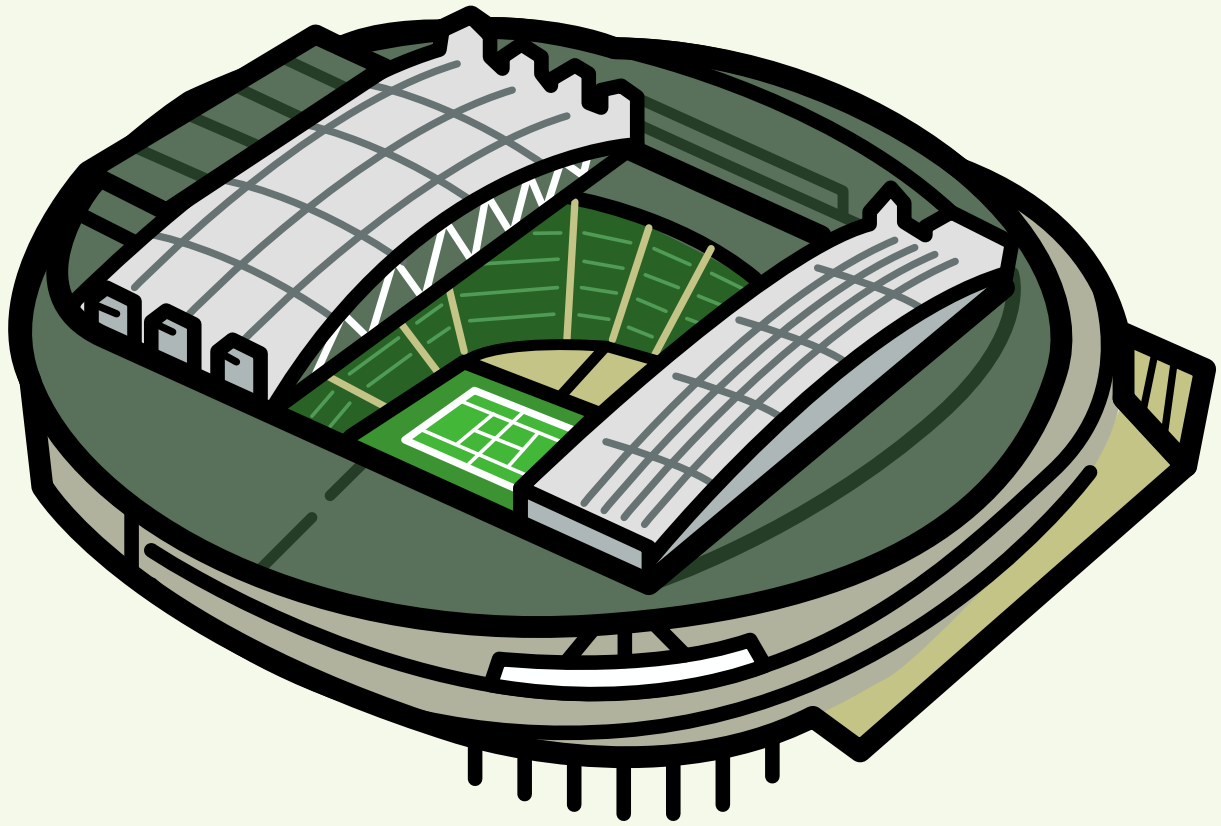
Wimbledon barrier game: A speaking and listening activity

Wimbledon design sheet

Wordsearch

Writing paper (x2)

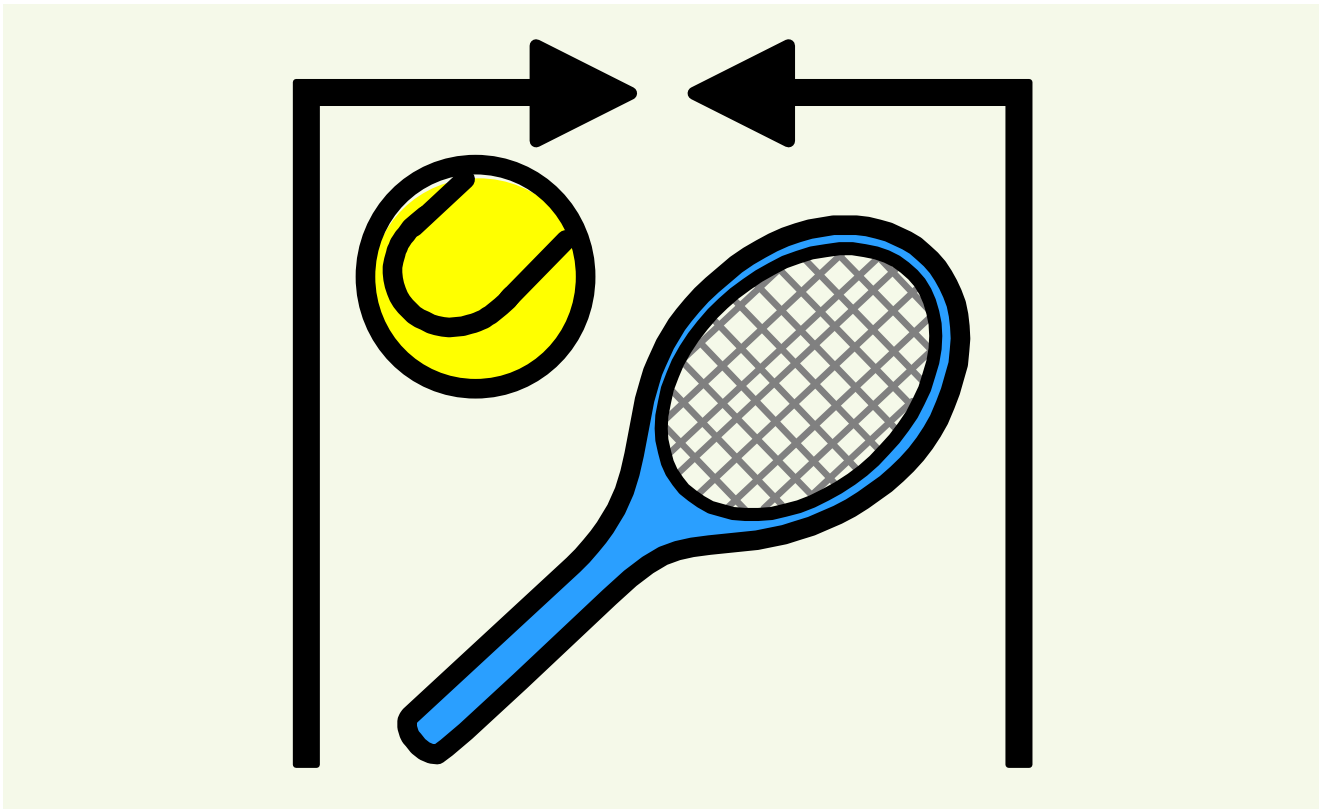




Wimbledon 2026

Symbol Book

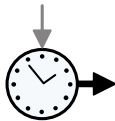




Tennis



has been played



since



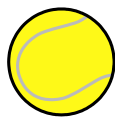
the 15th Century.



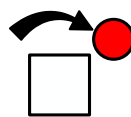
Players



use a racquet to hit



a ball



over



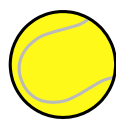
a net.



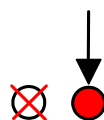
If 1 player



doesn't return



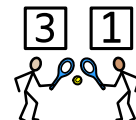
the ball



the other



player

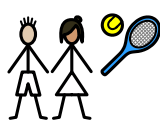


scores a point.



There are singles

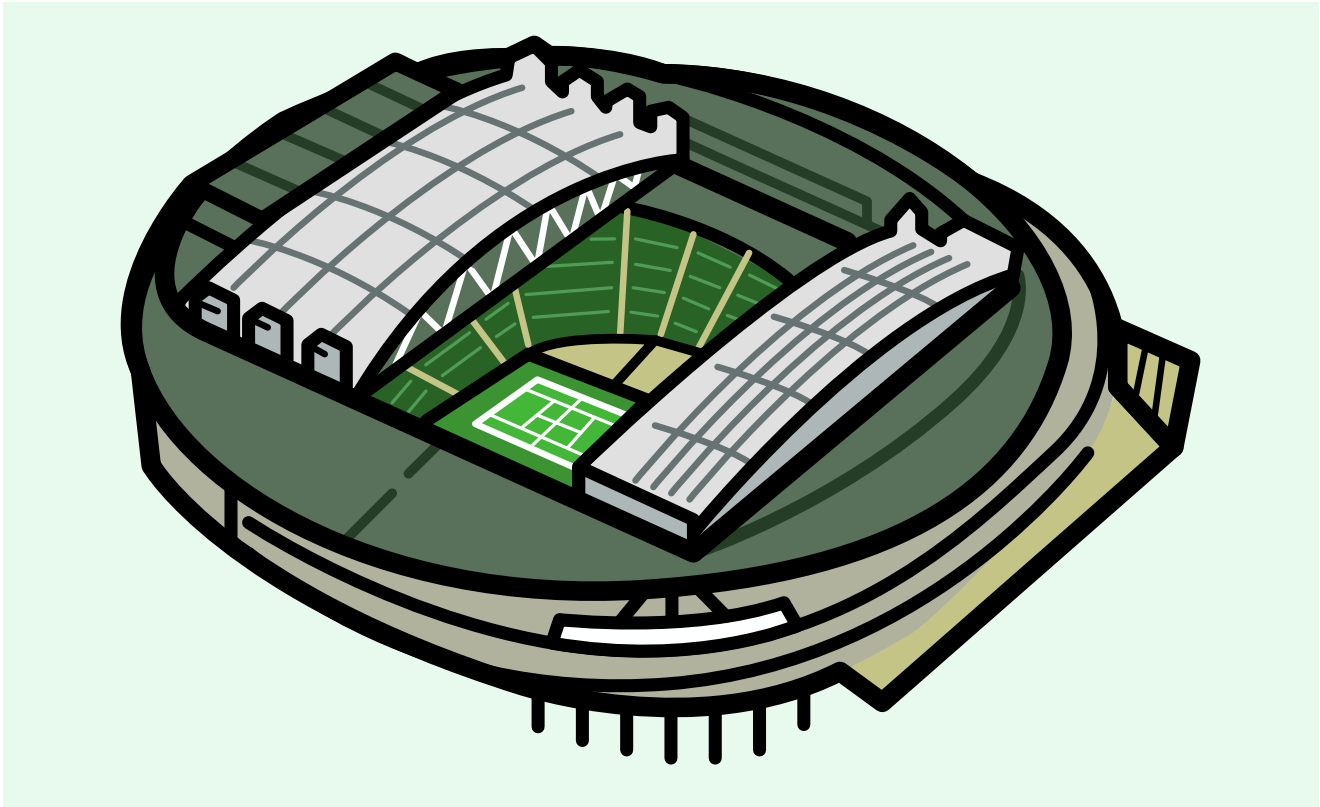
and



doubles



tennis matches.



Wimbledon

is



a famous



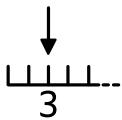
annual



tennis



tournament.



It is the 3rd

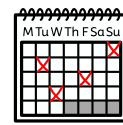
of

4

the 4



Grand Slam tennis



events.

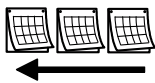


Wimbledon

is



the world's



oldest



tennis

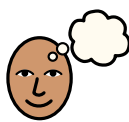


tournament.



Wimbledon

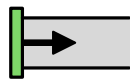
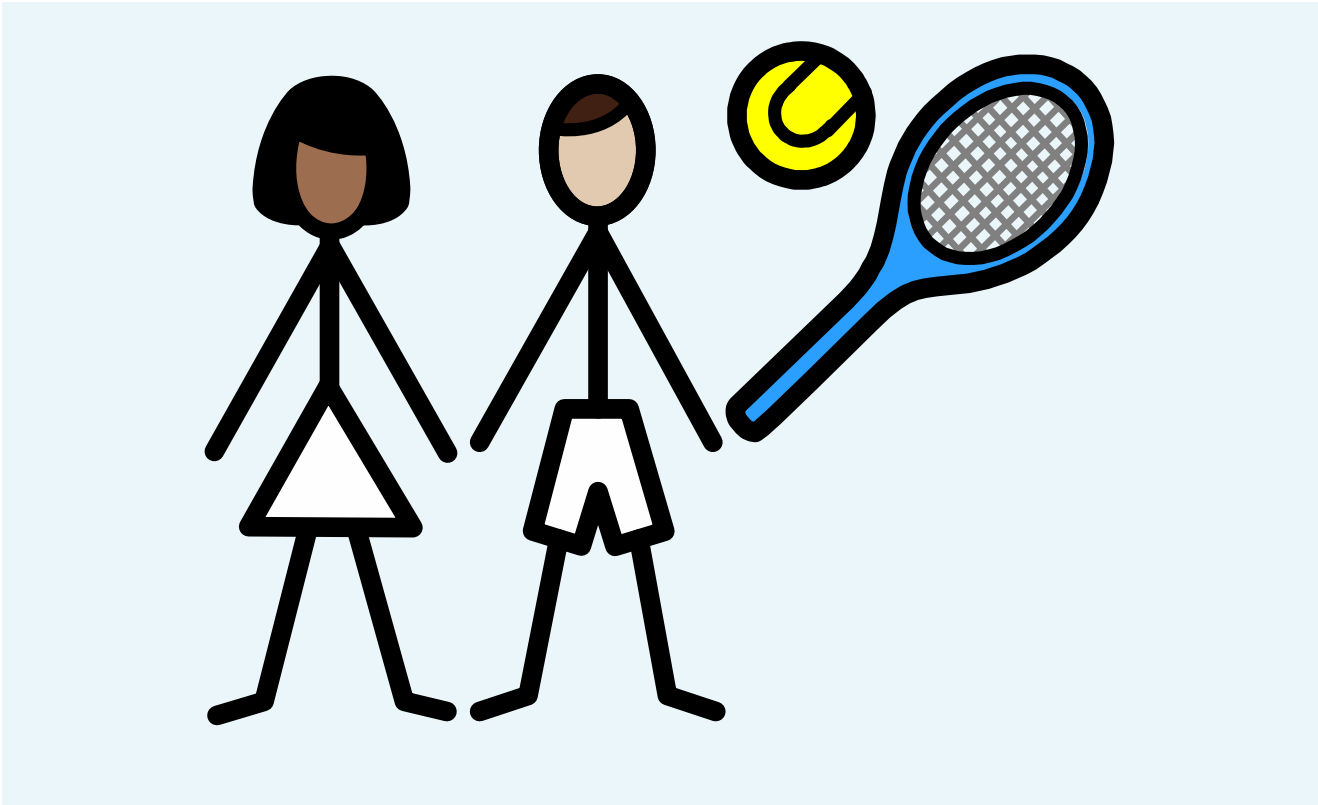
is



thought to be



the most prestigious.



1877

The Wimbledon Championships began in 1877.

1877



22



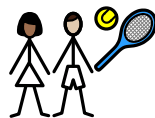
In 1877 there were 22 competitors.



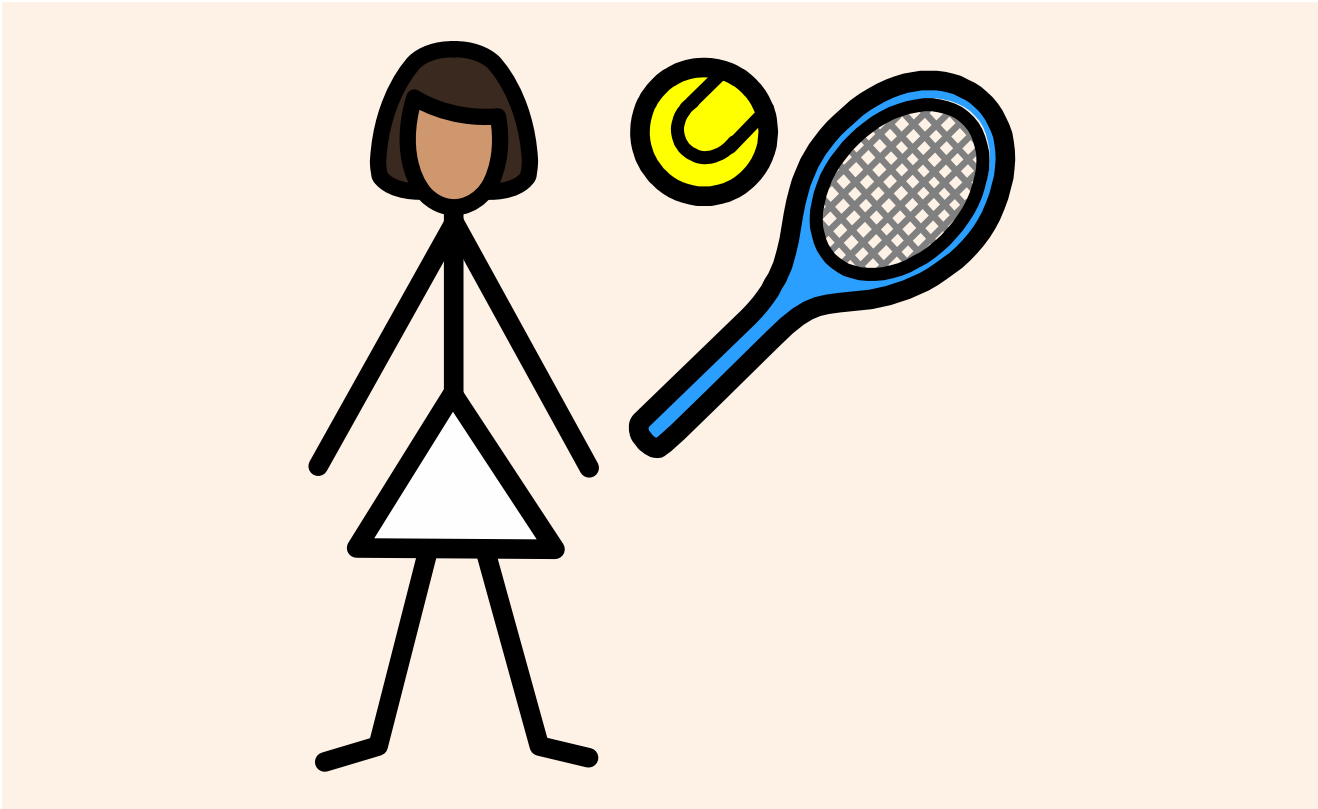
Wimbledon has grown hugely since then.



1000



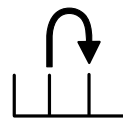
There are now more than 1000 players.



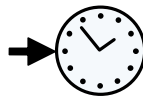
There is a Gentlemen's Singles competition.



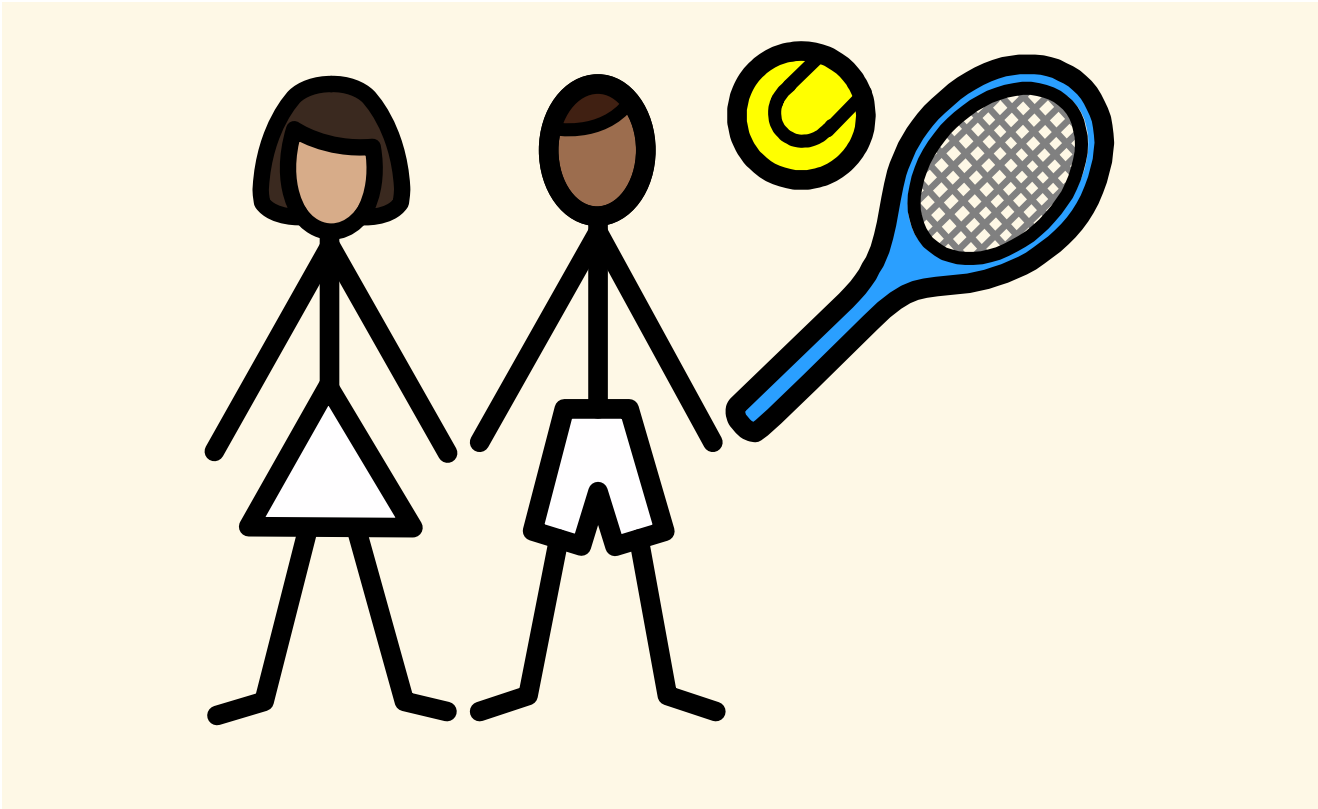
There is a Ladies' Singles competition.



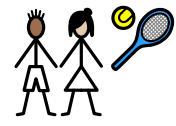
The winners of each match qualify for the next round.



They stay in the competition until they lose a match.

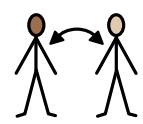
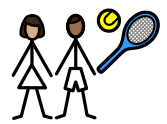


++



There are also doubles competitions.

2

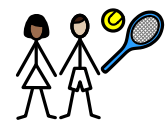


There are 2 players on each team.

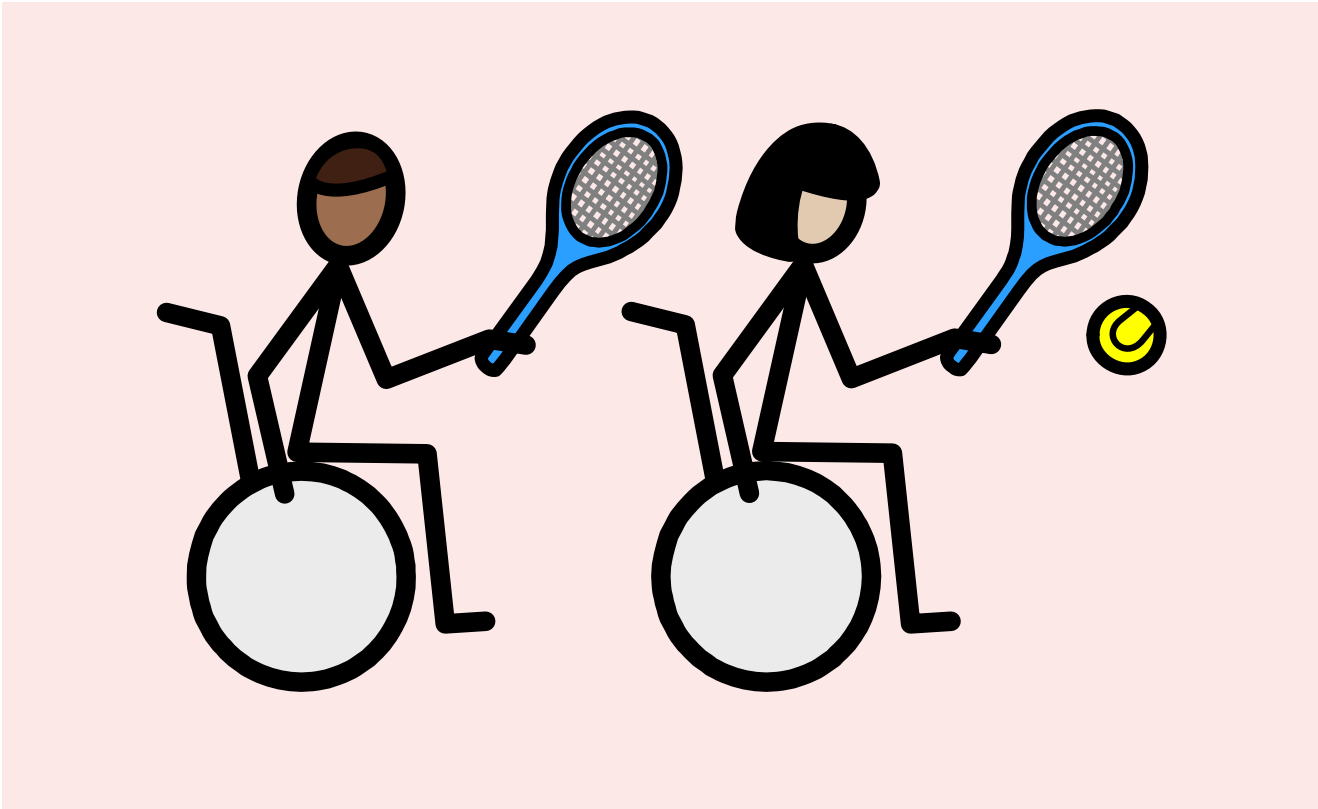


There are Ladies' Doubles and Gentlemen's Doubles.

++



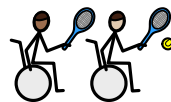
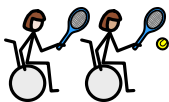
There is also a Mixed Doubles competition.



Wheelchair tennis is now very popular.

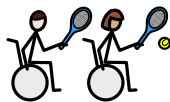


There are Ladies' Singles and Gentlemen's Singles competitions.

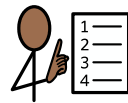
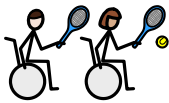
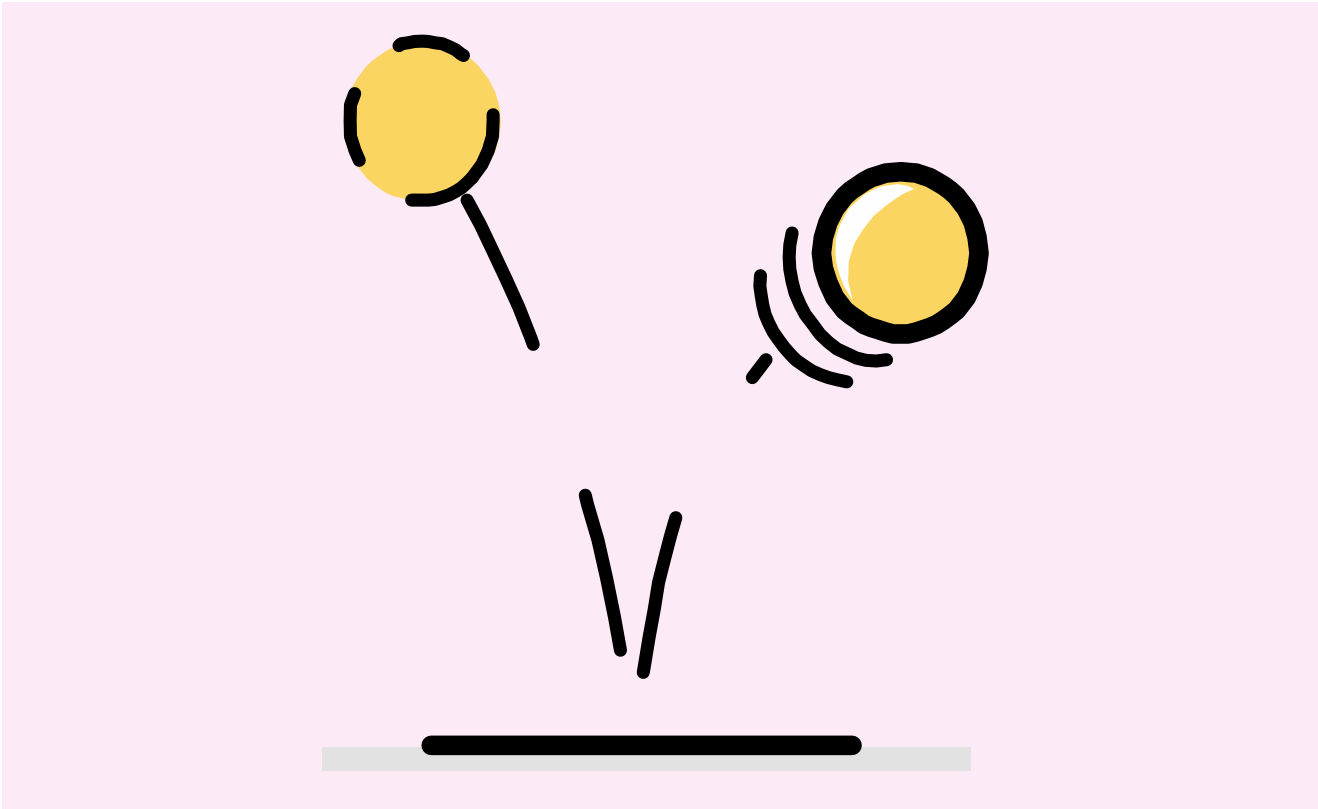


There are Ladies' Doubles and Gentlemen's Doubles competitions.

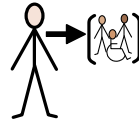
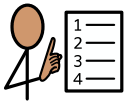
++



There is also a Mixed Wheelchair Doubles competition.



Wheelchair championships have slightly different rules.



These rules make the game more inclusive.



2x



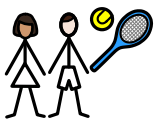
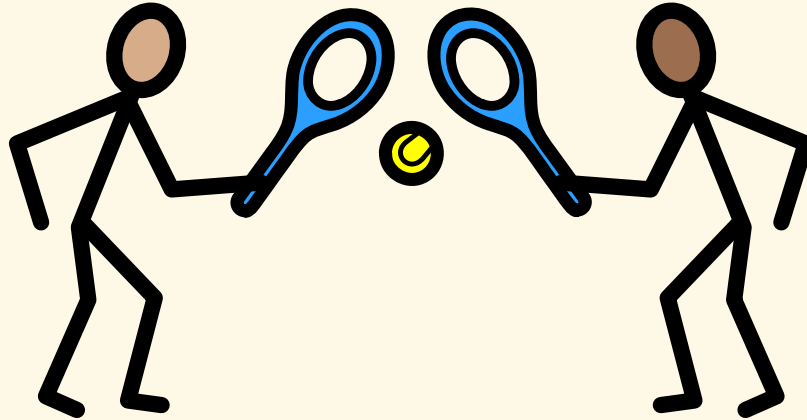
The ball can bounce twice in wheelchair tennis.



Wheelchair tennis players are incredibly talented.

3

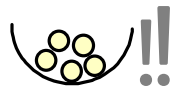
1



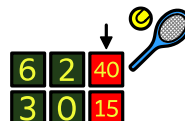
Players



must score



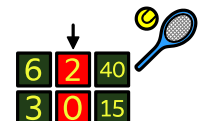
at least



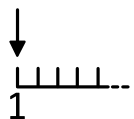
4 points



to win



a game.



The first

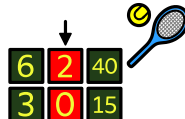


player



to win

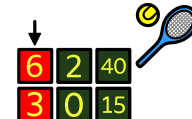
6



games



wins



the set.



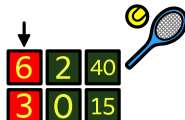
The player



who wins



the most



sets



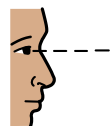
wins



the match.



An umpire

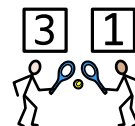


watches

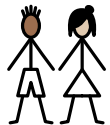
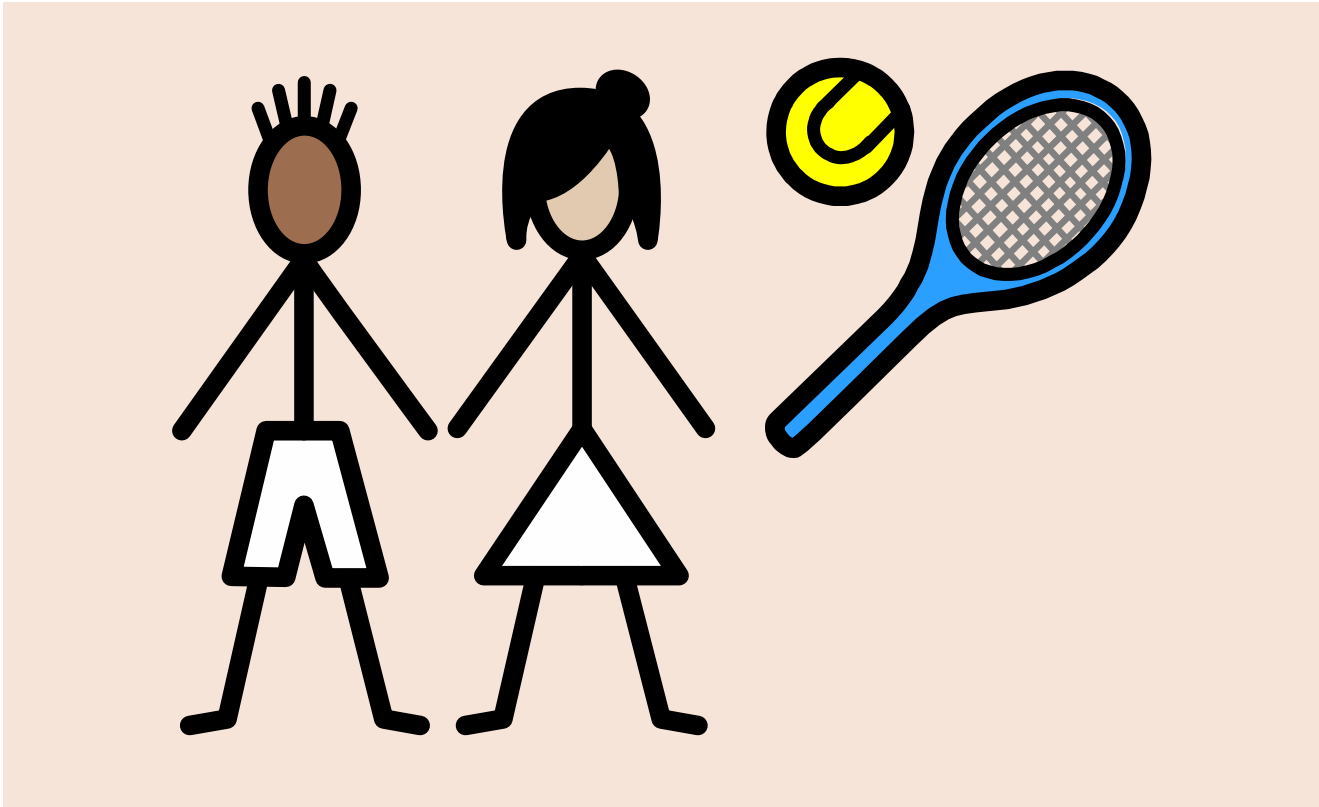


the match

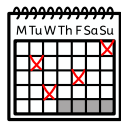
and



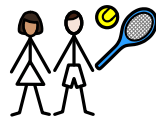
keeps the scores.



There are Junior



events



for players



aged

14

14

18

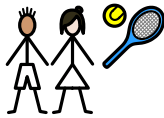
- 18.



There are Junior Singles



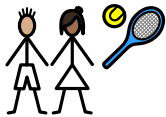
matches.



There are Junior Doubles



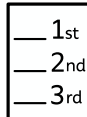
matches.



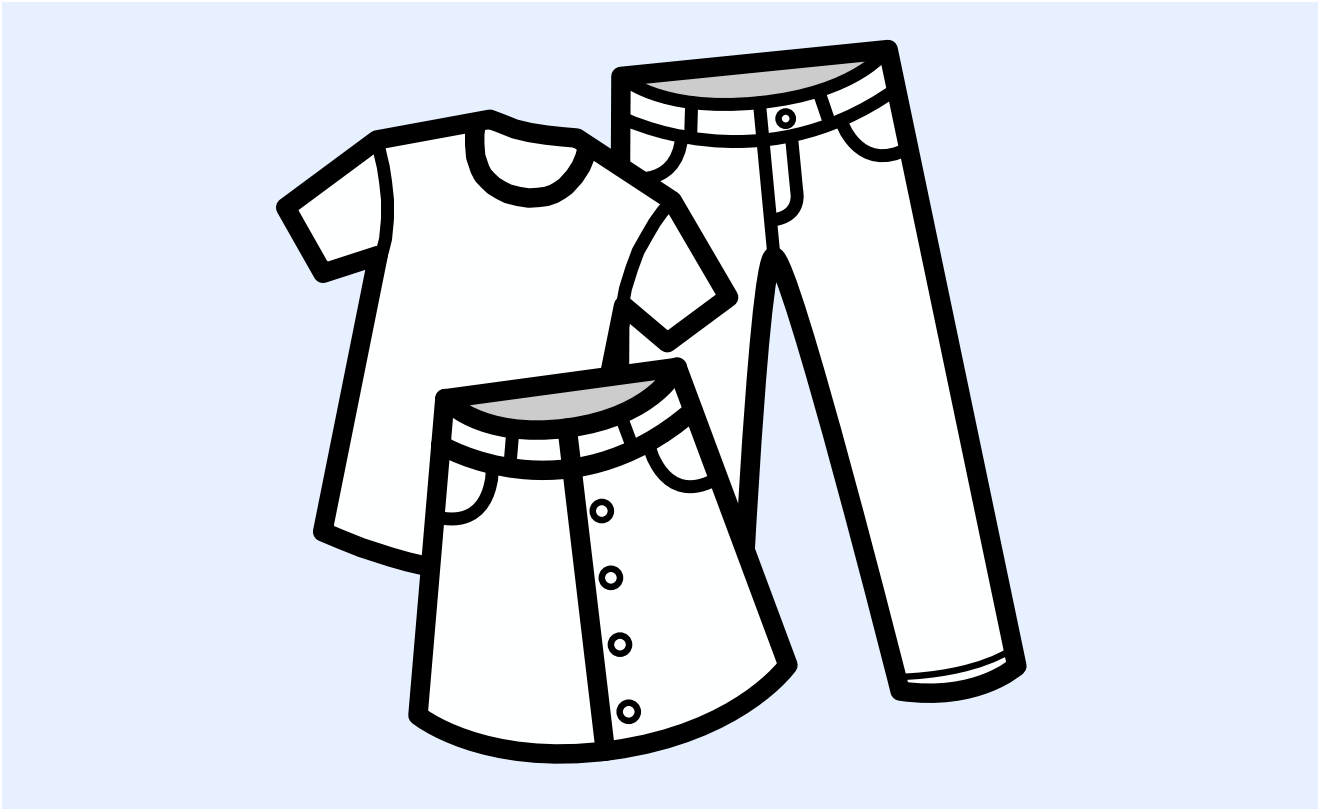
Junior players



can



earn ranking points.



Wimbledon



is the only



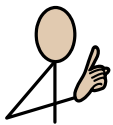
Grand Slam



played



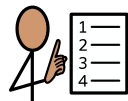
on grass.



There are strict



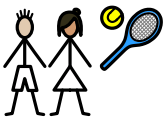
clothing



rules



at Wimbledon.



All players



must wear



white clothing.



This includes



shirts,



skirts,



shorts,

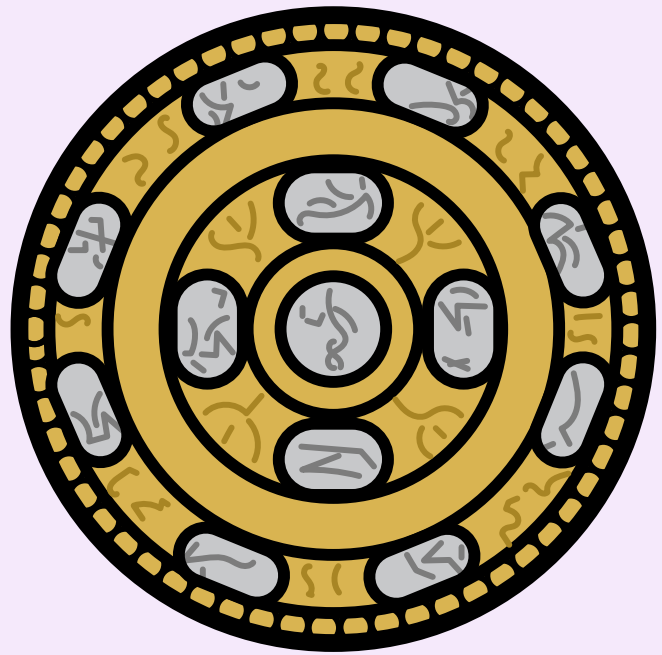


t-shirts

and



shoes.



2025

53^{000,000} M



In 2025 there was £53 million of prize money.



3^{000,000} M

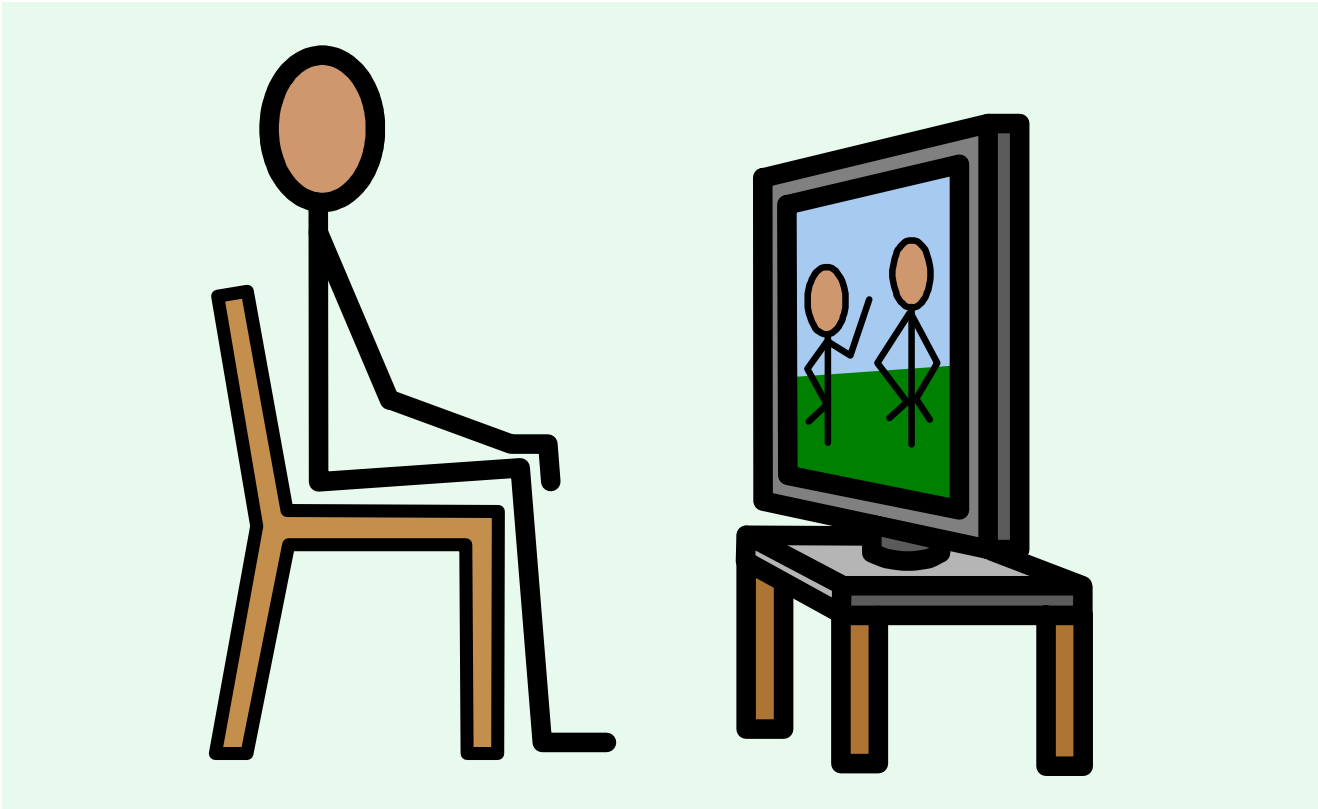
The male and female champions received £3 million.



The Gentlemen's Singles Champion receives a cup.



The Ladies' Singles Champion receives a salver.



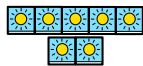
1



Wimbledon is one of the world's most prestigious sporting events.



2



It is played for 2 weeks in late June and early July.



000,000
M



Wimbledon is watched on television by millions of people.



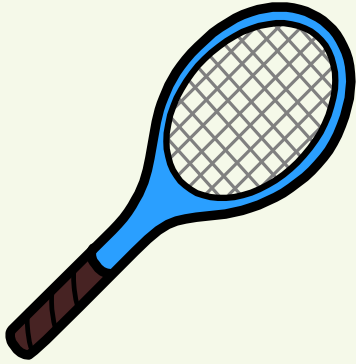
People like to eat strawberries and cream at Wimbledon!



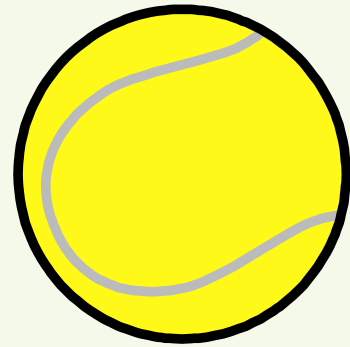
tennis



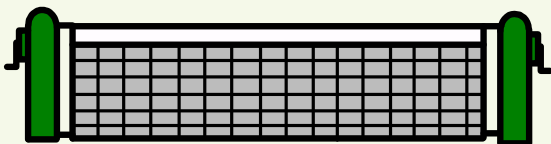
played



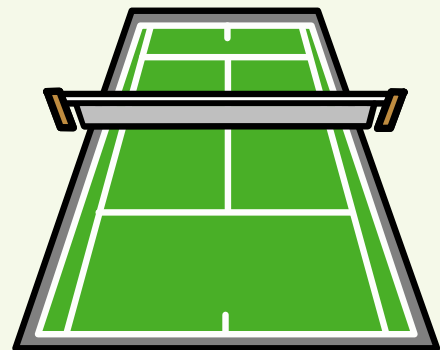
racquet



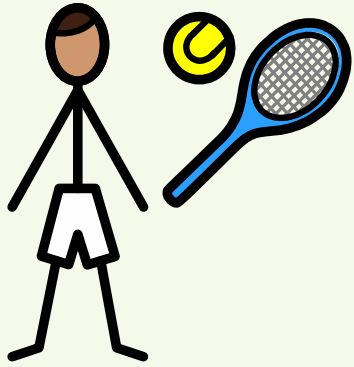
ball



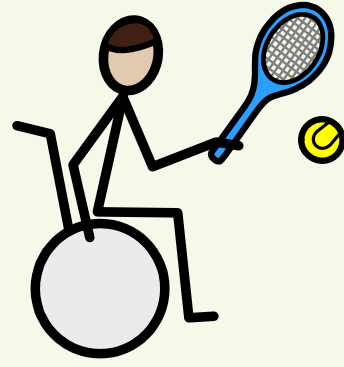
net



tennis court



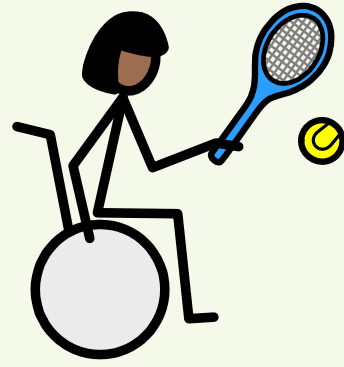
Gentlemen's Singles



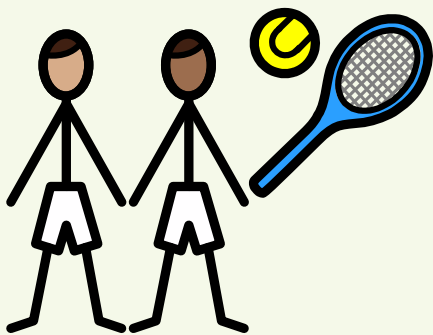
Gentlemen's Singles



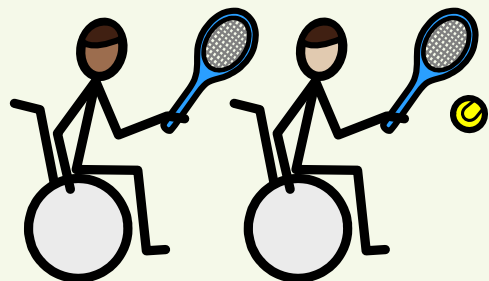
Ladies' Singles



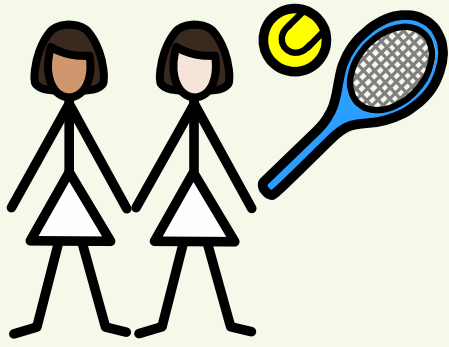
Ladies' Singles



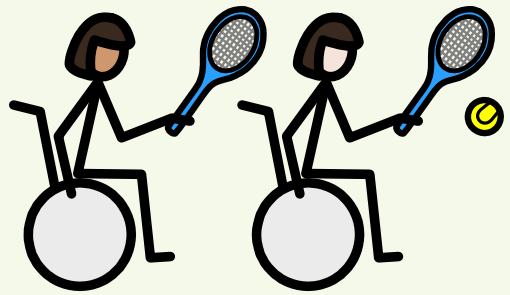
Gentlemen's Doubles



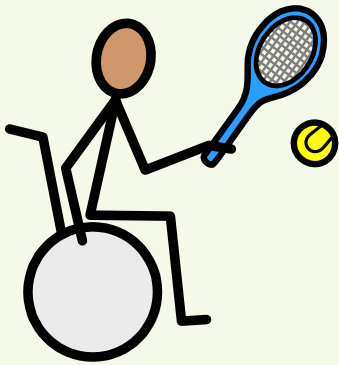
Gentlemen's Doubles



Ladies' Doubles



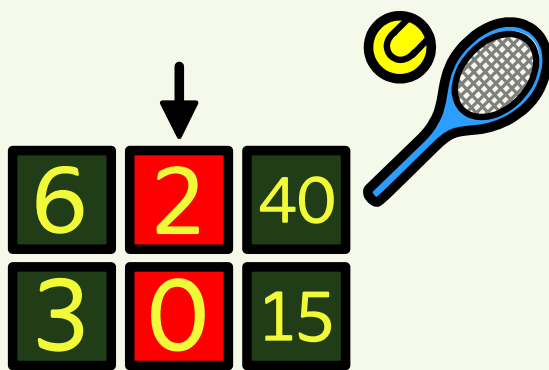
Ladies' Doubles



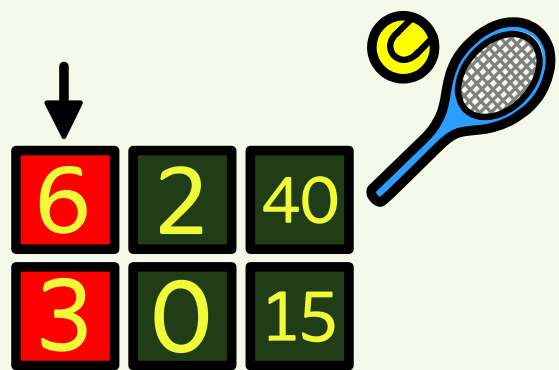
wheelchair tennis



match



game



set



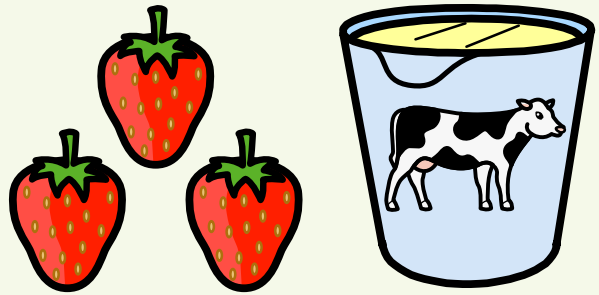
Gentlemen's
trophy



Ladies'
trophy



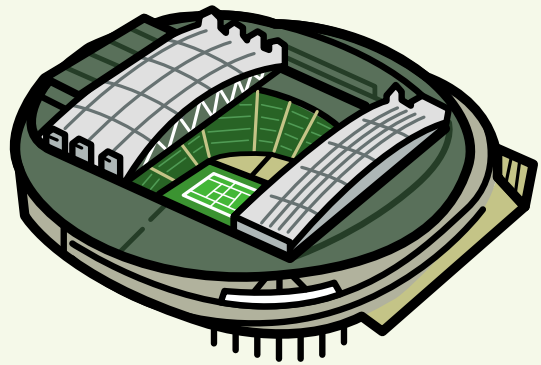
grass



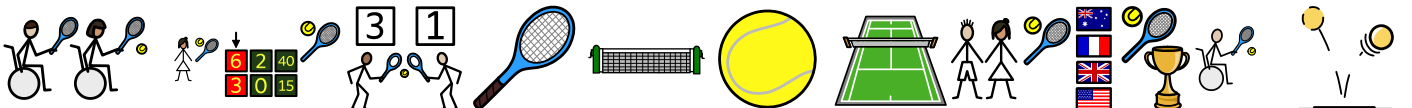
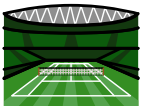
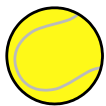
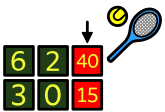
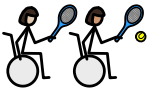
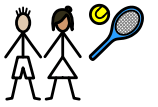
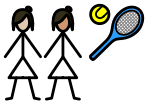
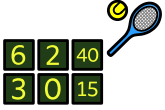
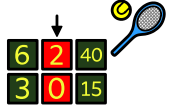
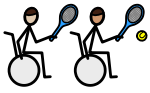
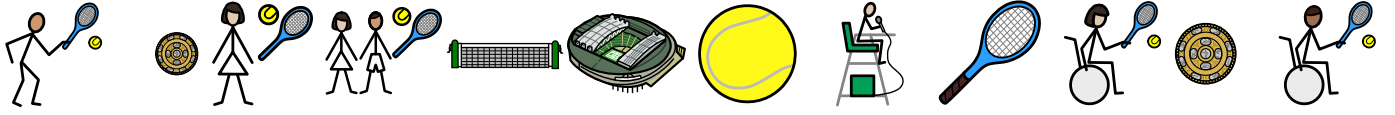
strawberries
and cream

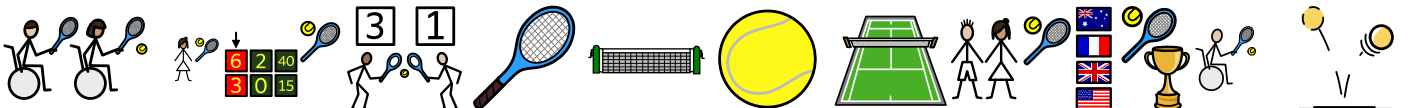
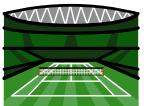
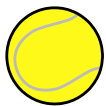
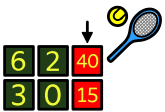
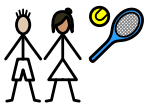
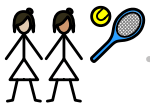
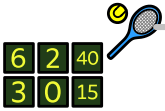
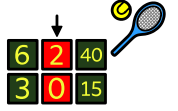
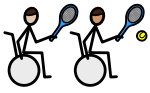
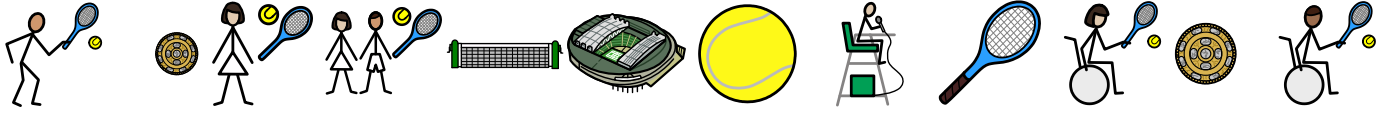


Grand Slam



Wimbledon

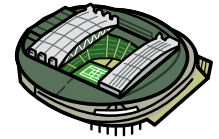
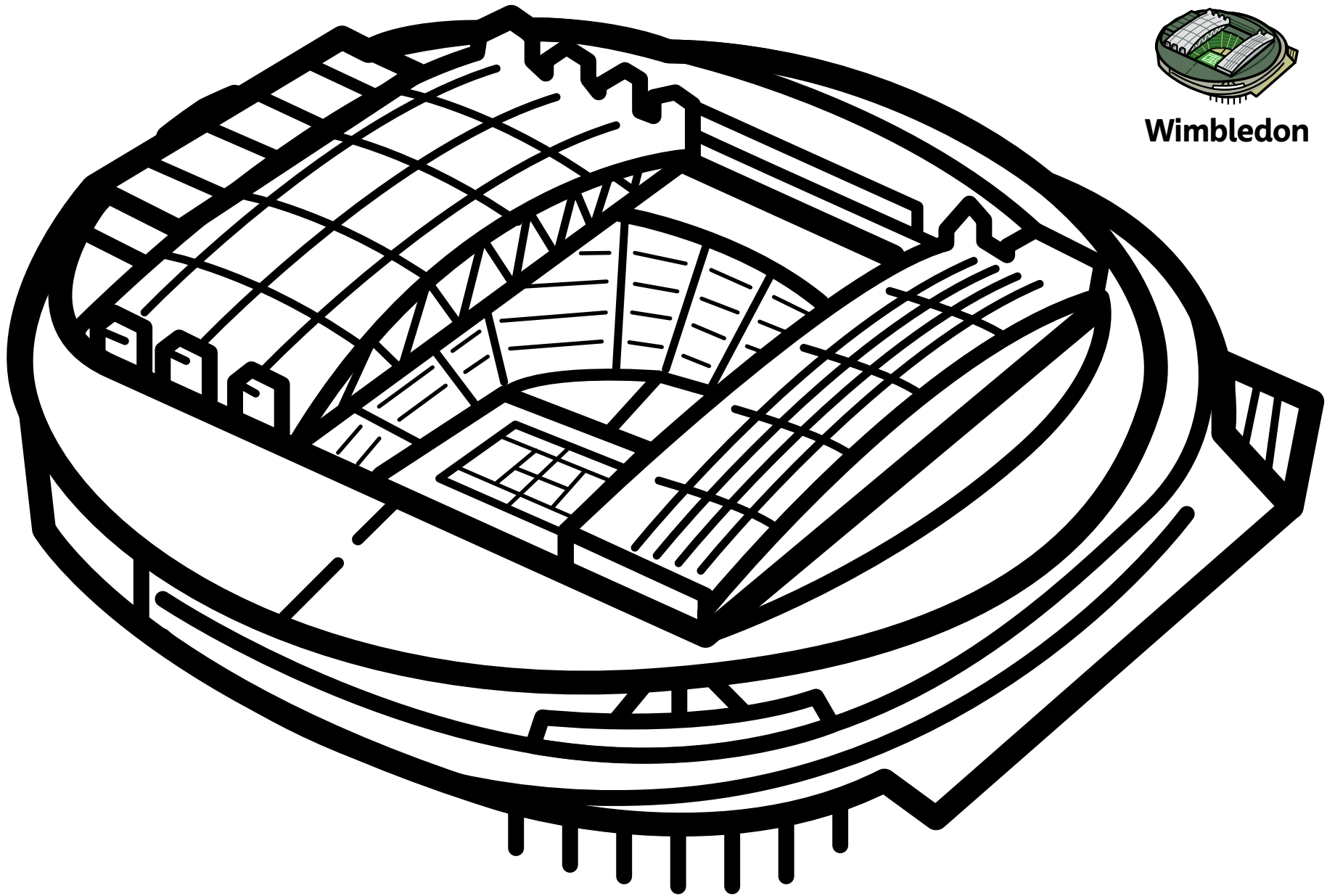




The Wimbledon Championships

2026

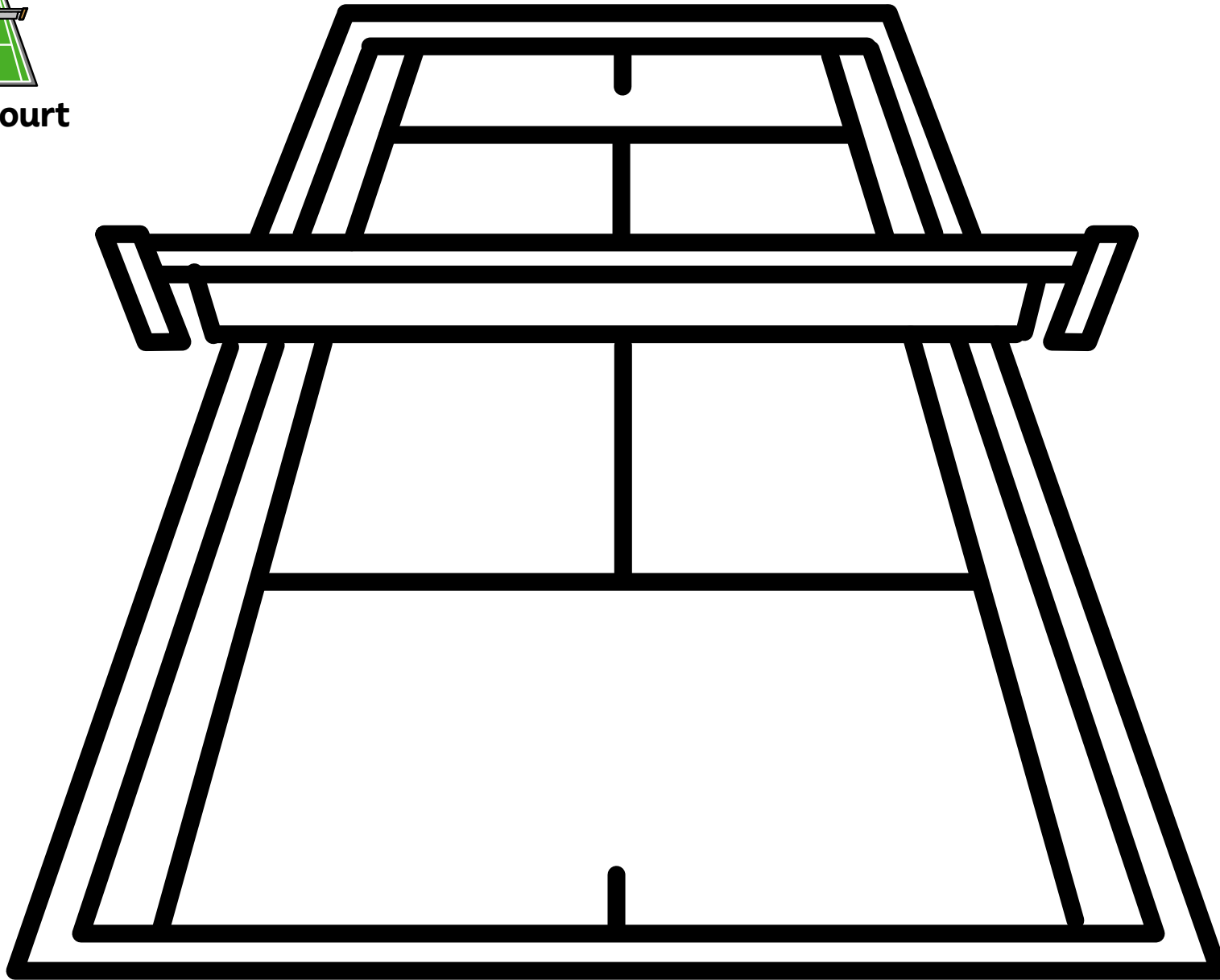




Wimbledon

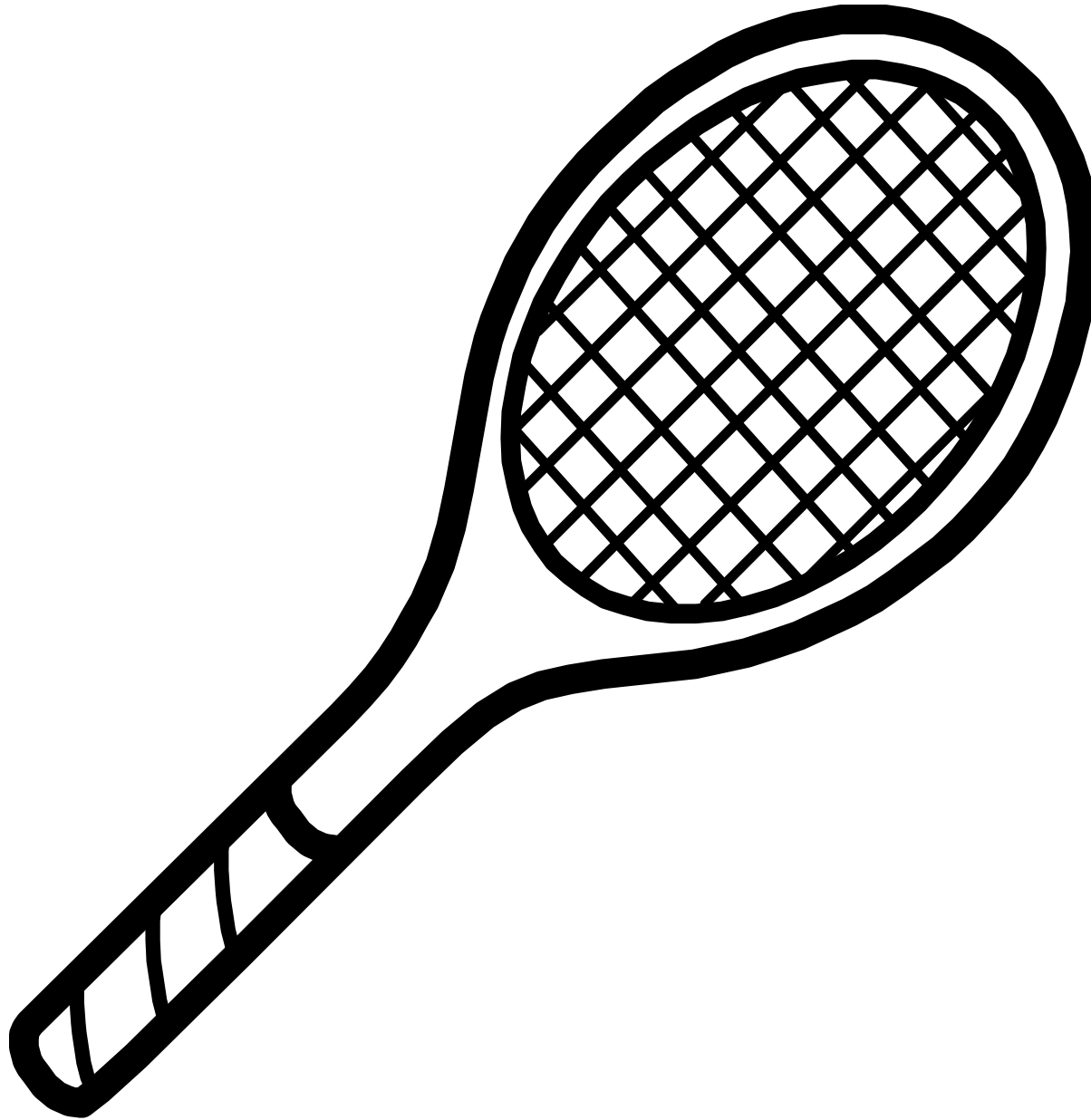


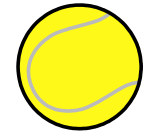
tennis court



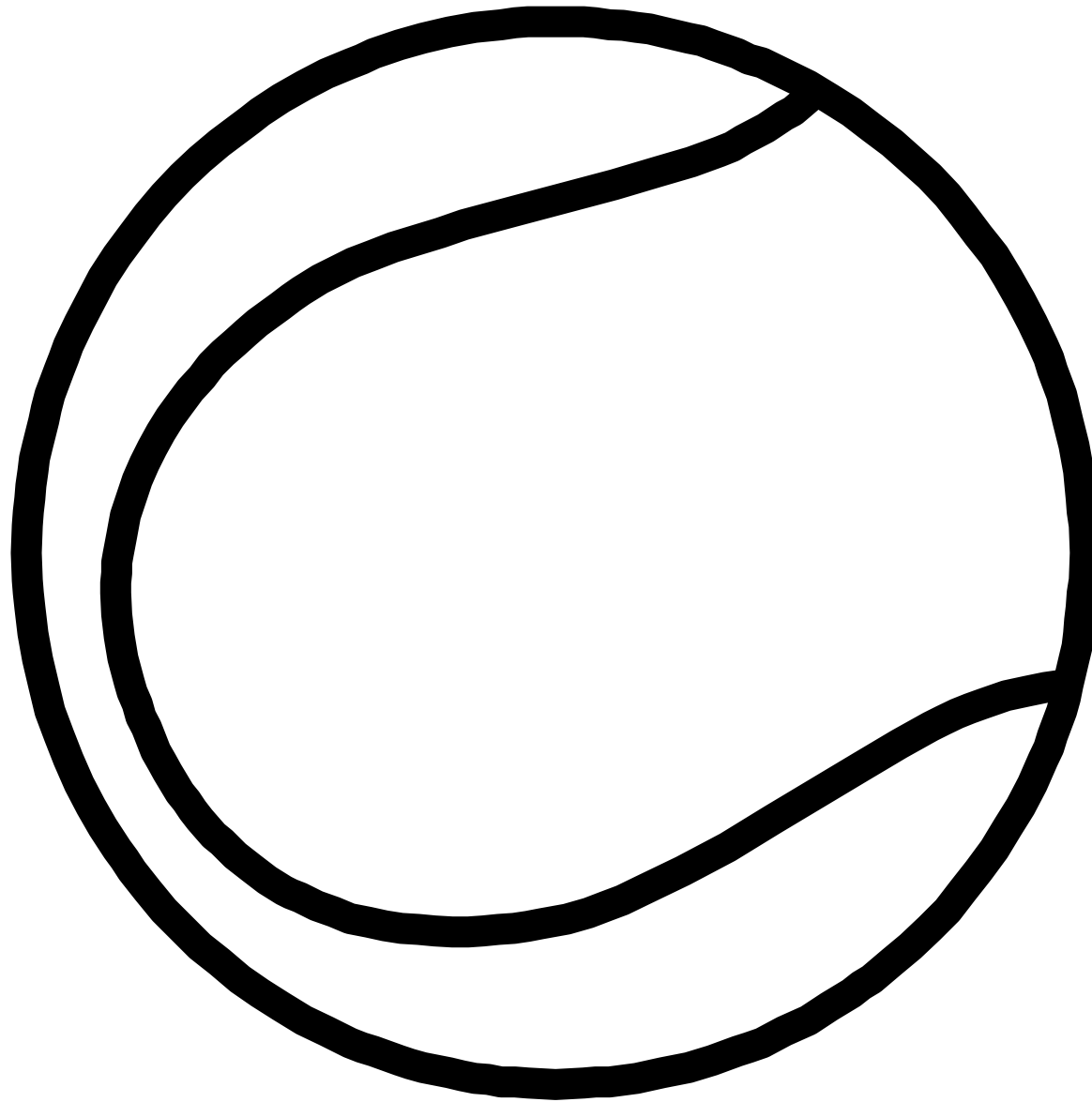


tennis racquet



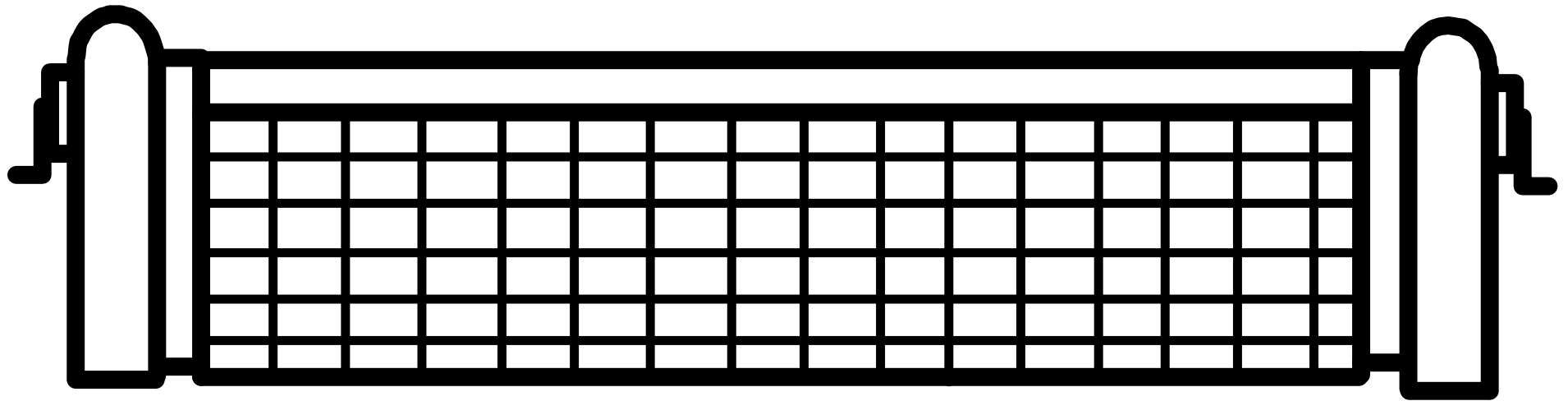


tennis ball



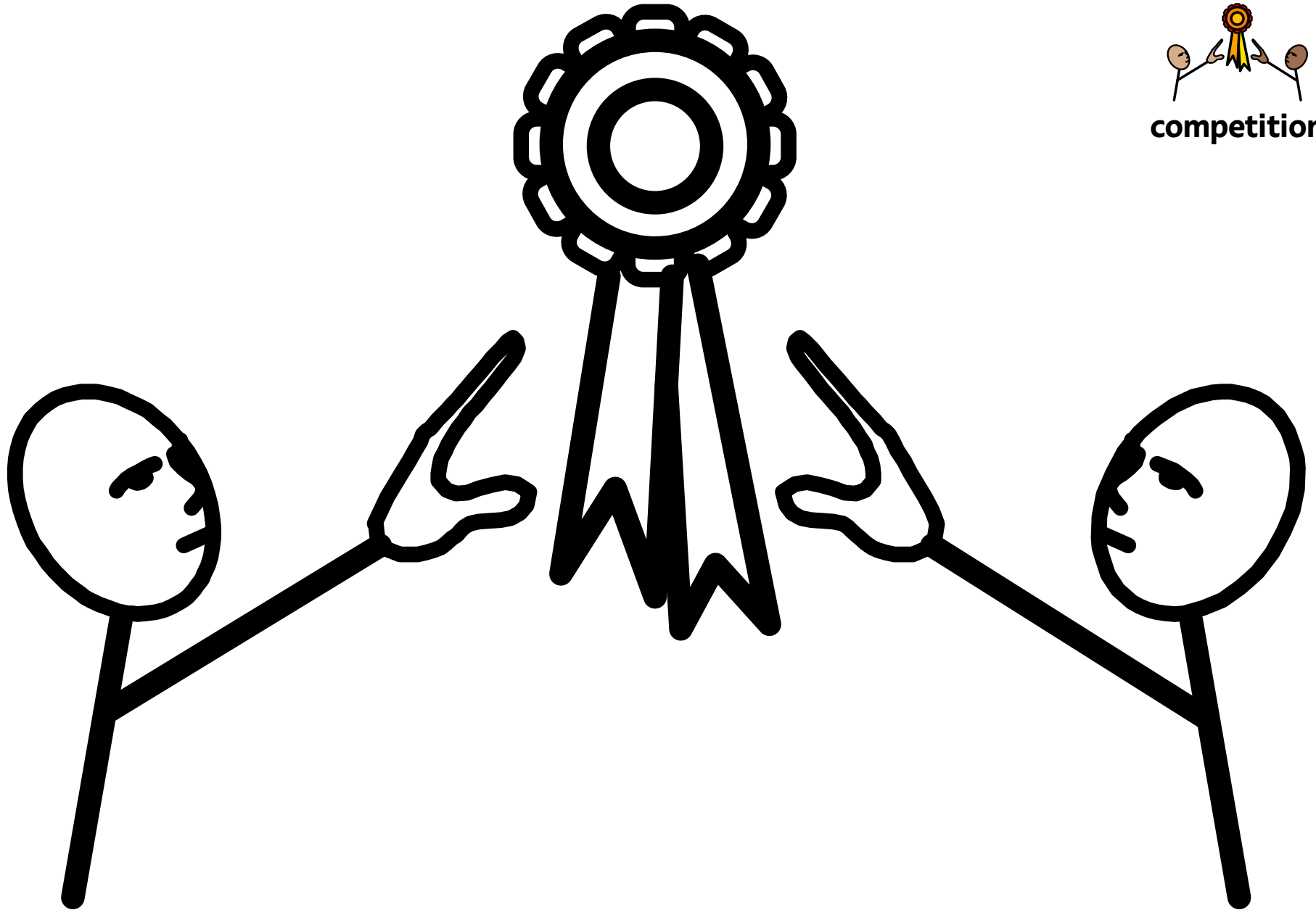


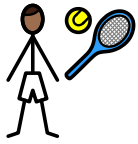
tennis net



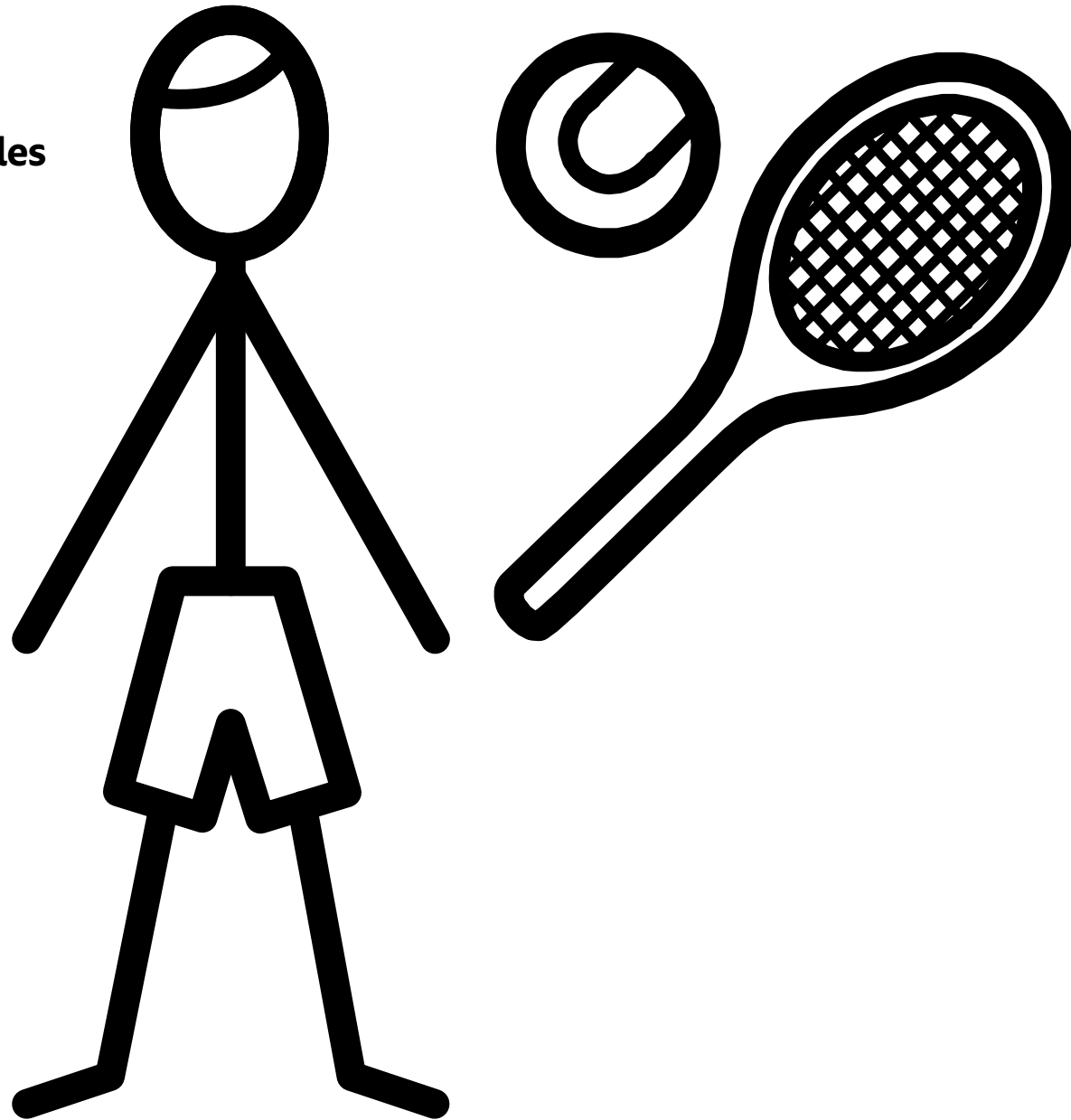


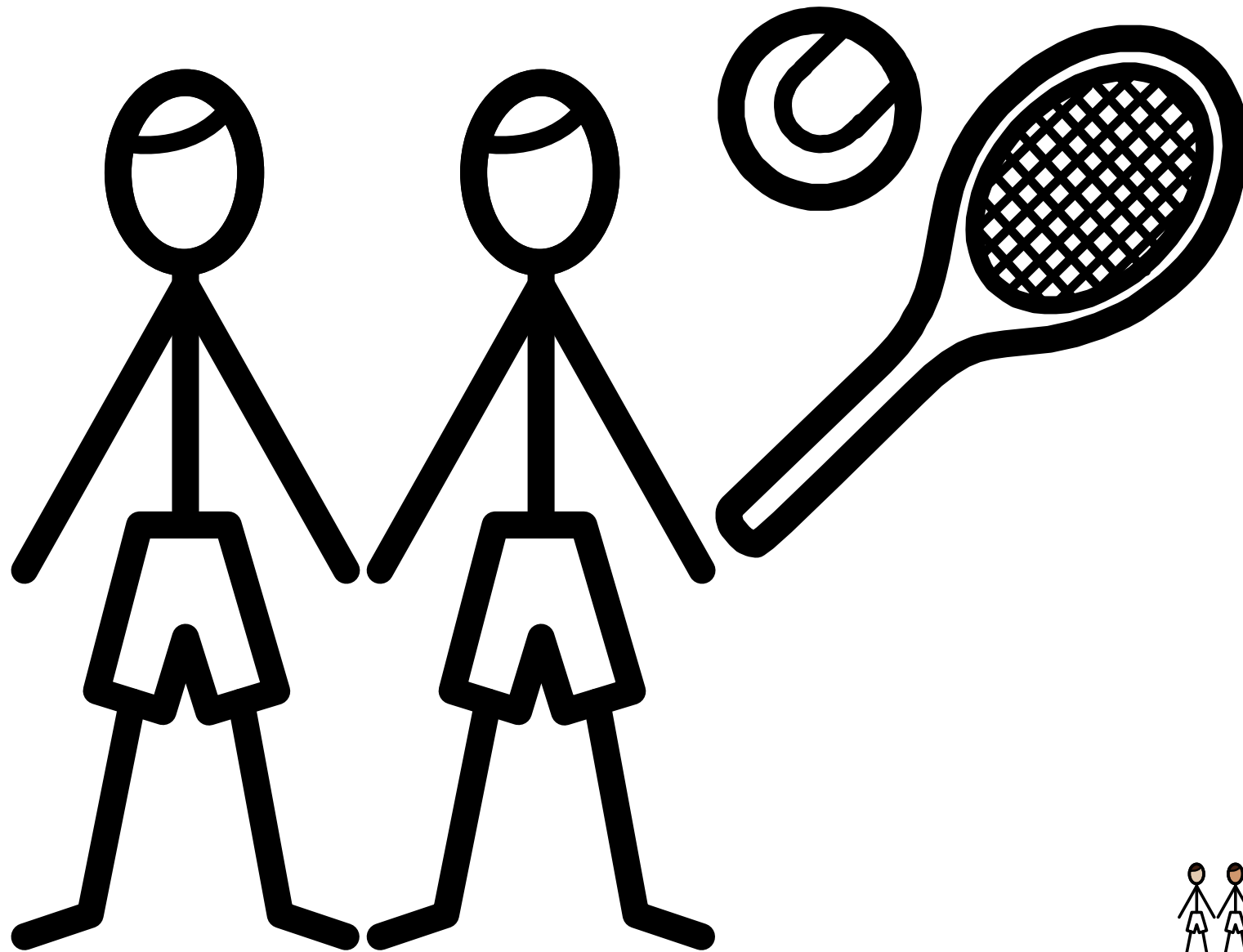
competition





Gentlemen's Singles

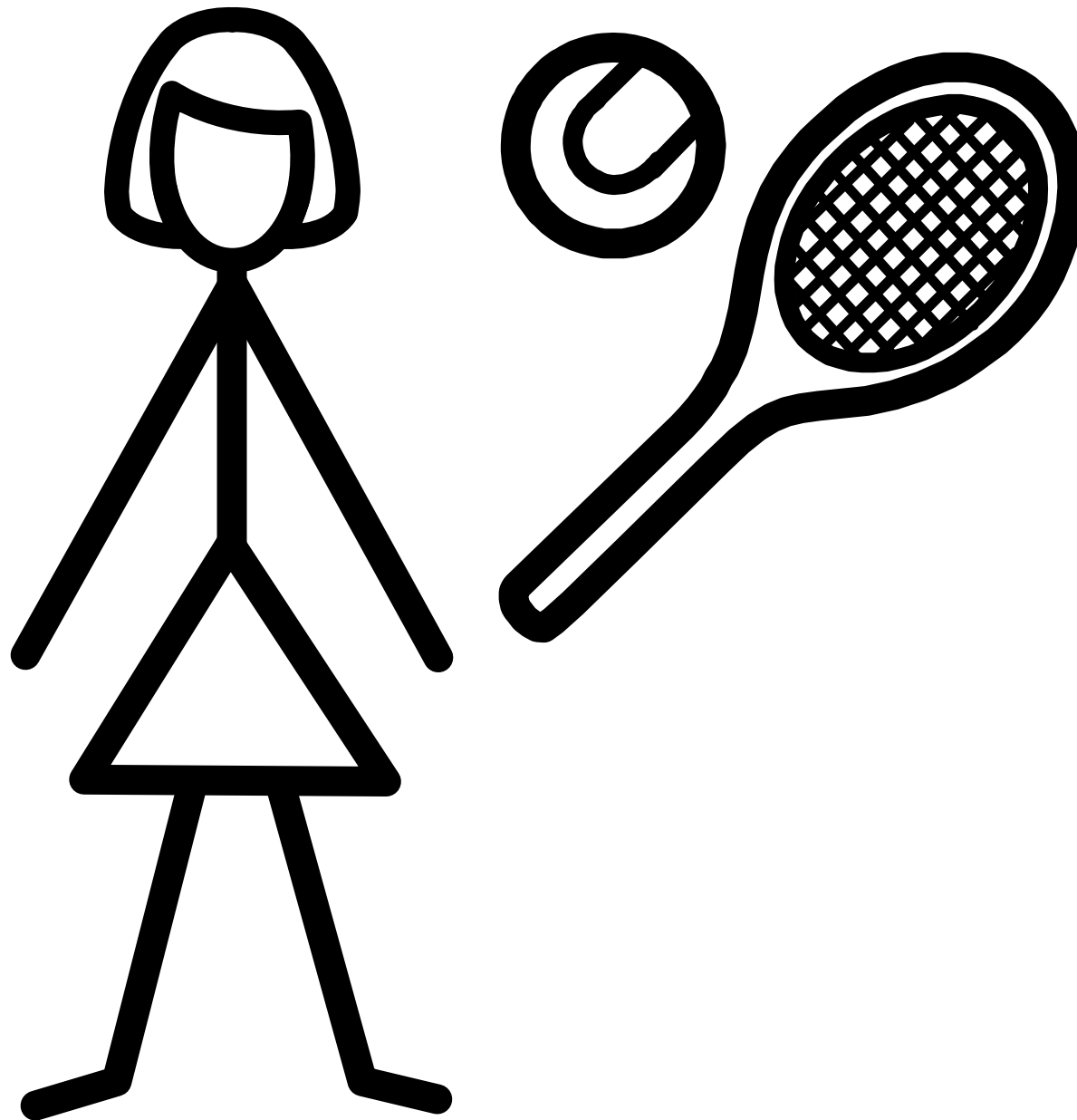


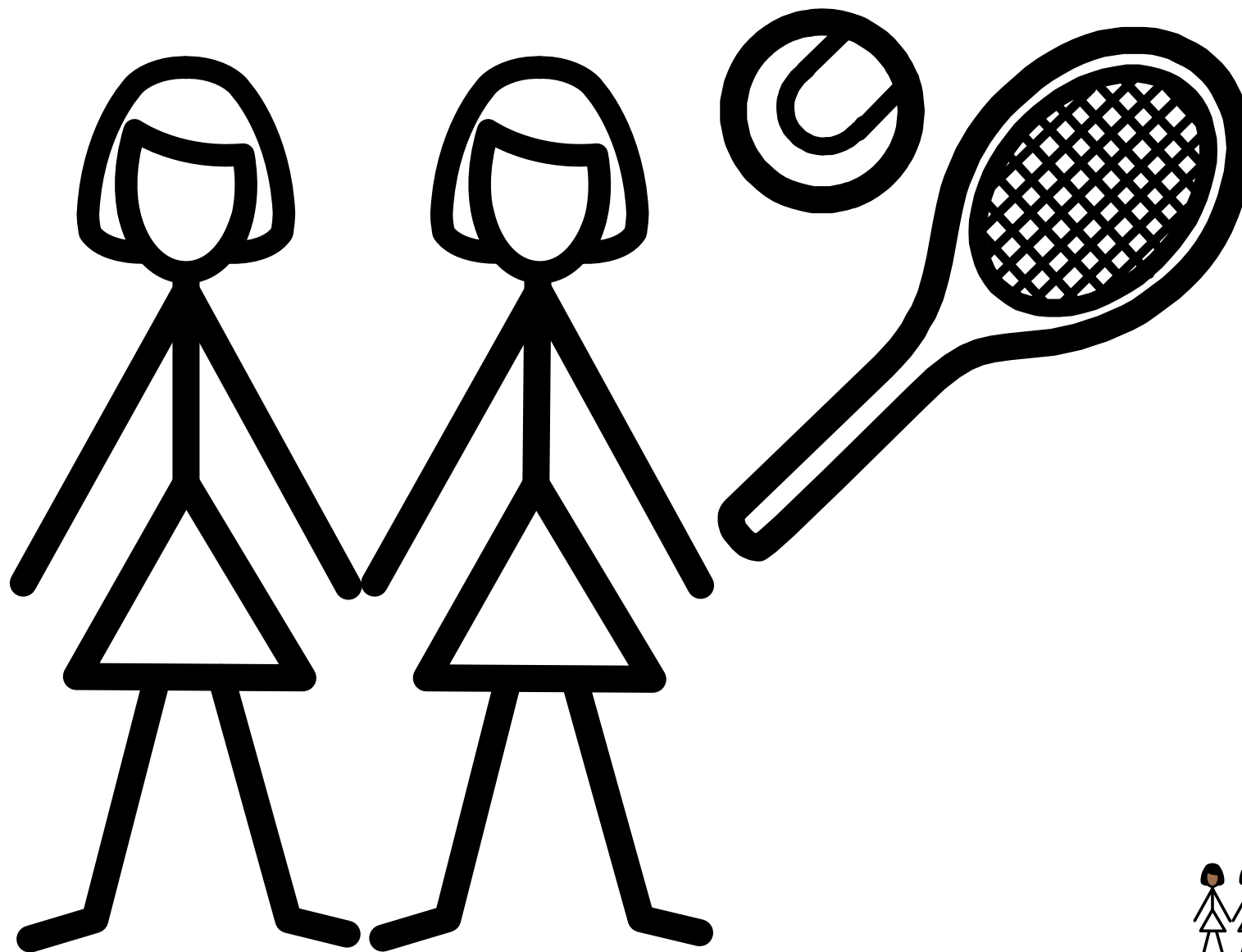


Gentlemen's Doubles



Ladies' Singles

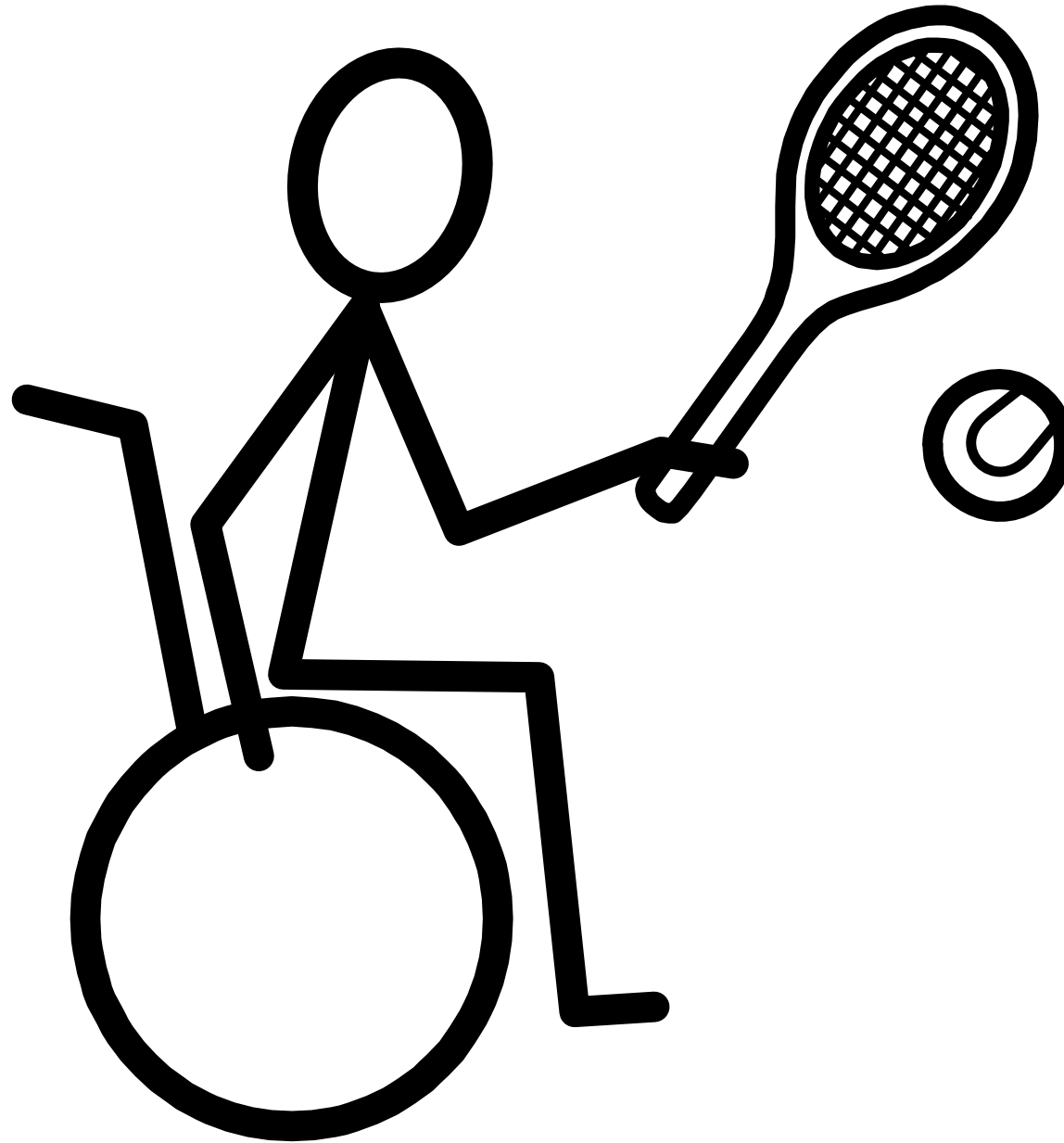


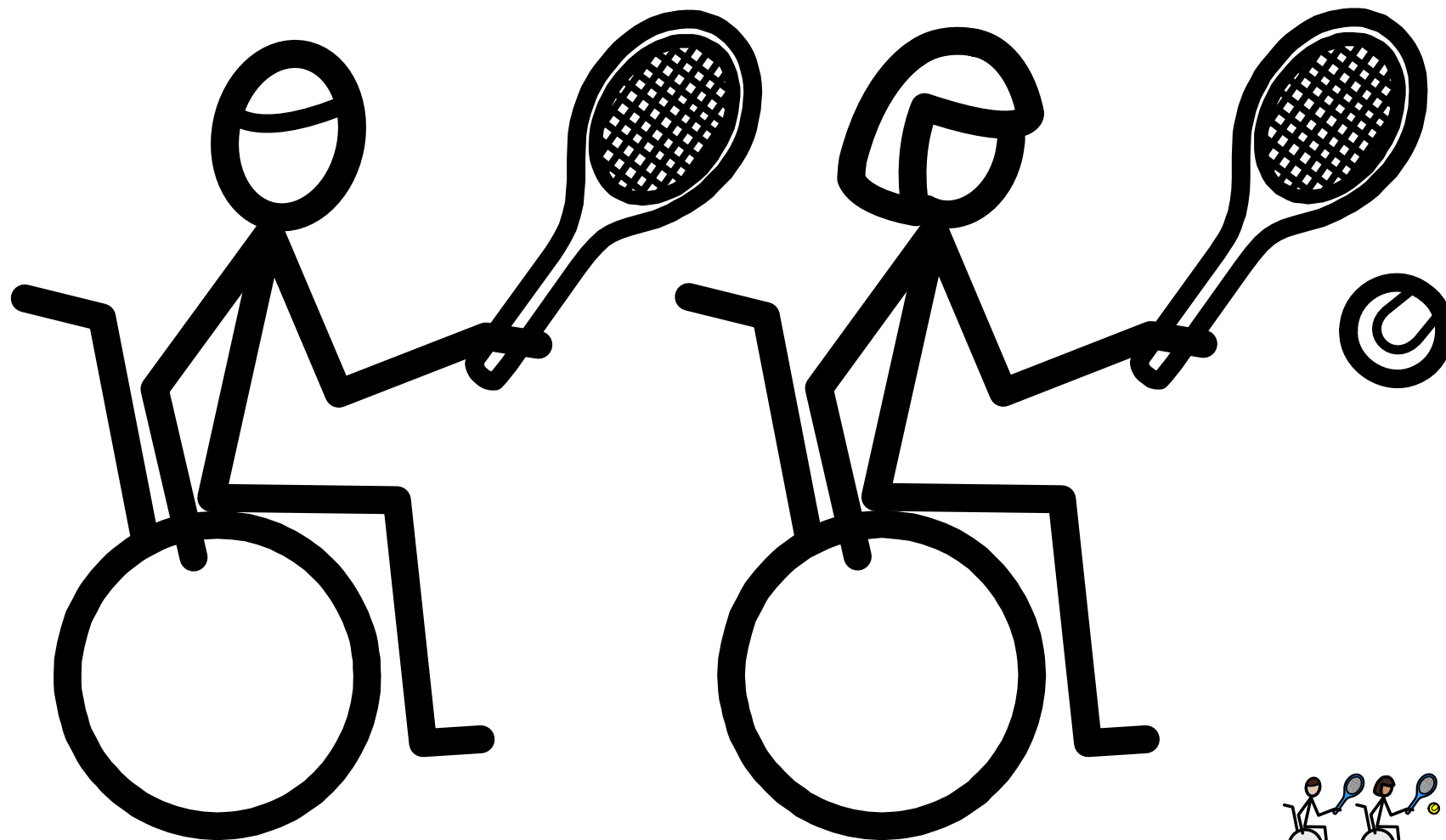


Ladies' Doubles

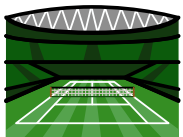
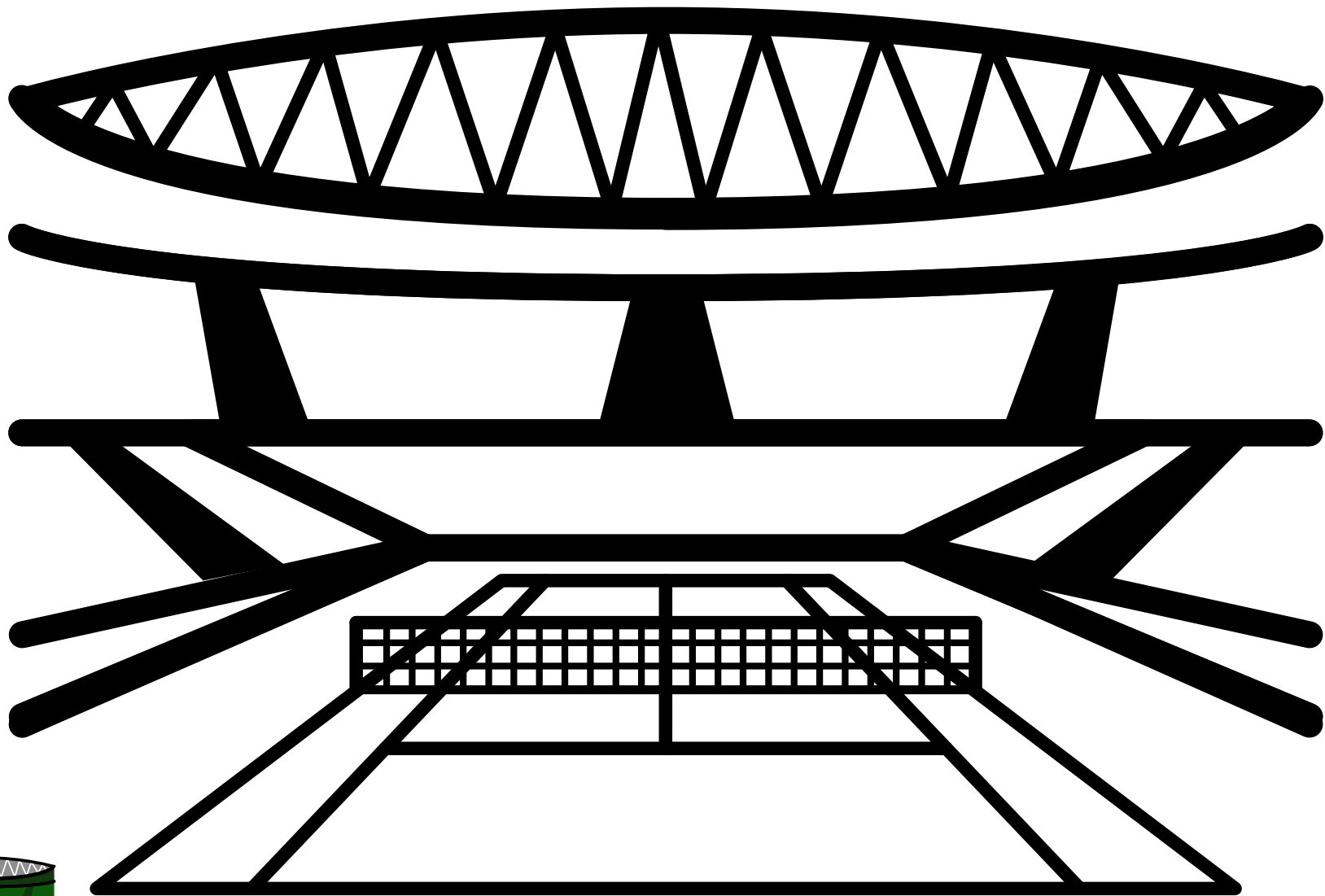


wheelchair tennis





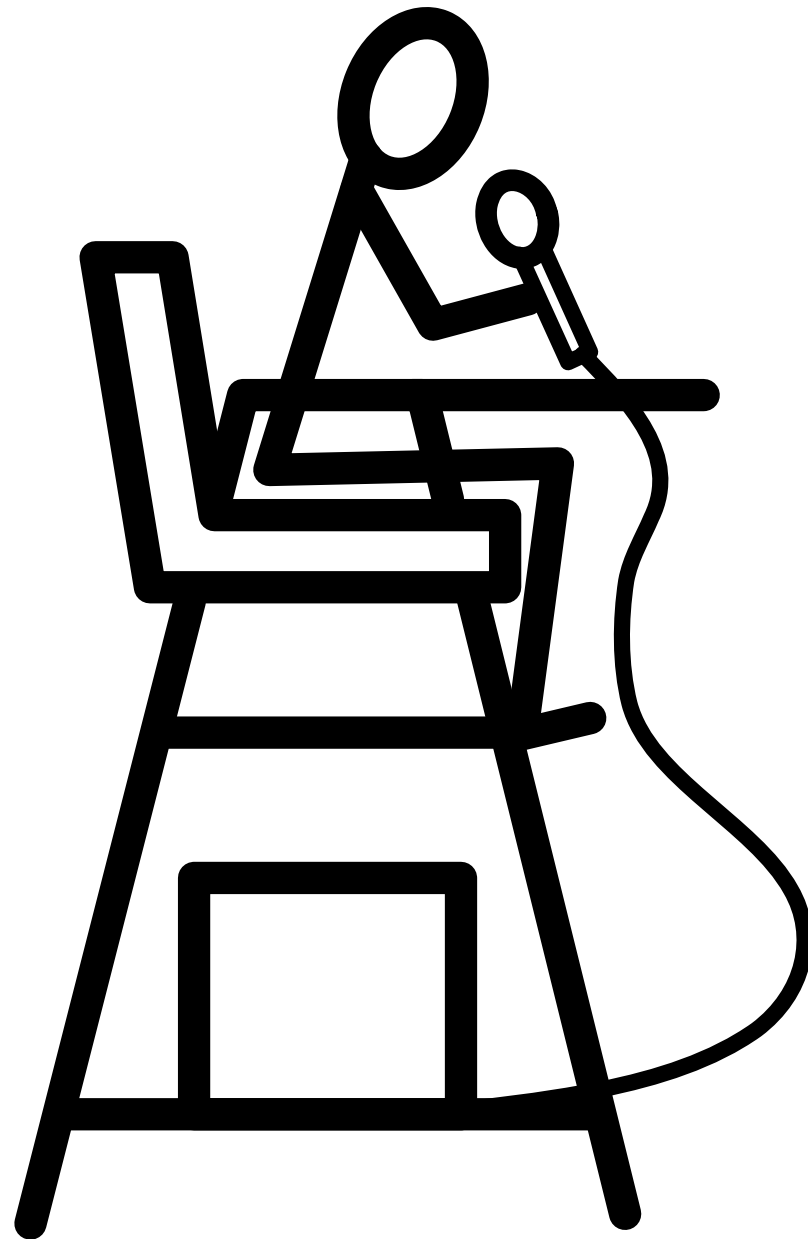
Wheelchair Doubles

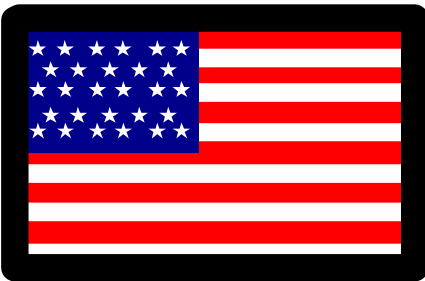
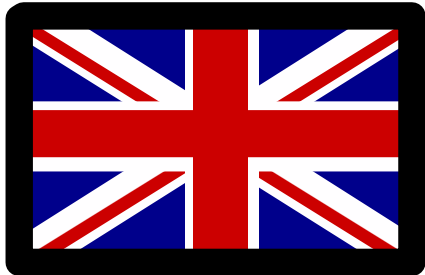
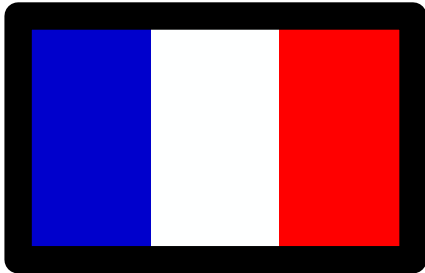
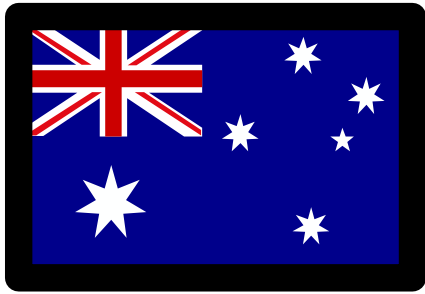


Centre Court

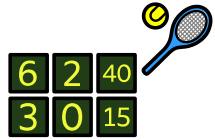


umpire





Grand Slam



scoreboard



6

2

40

3

0

15

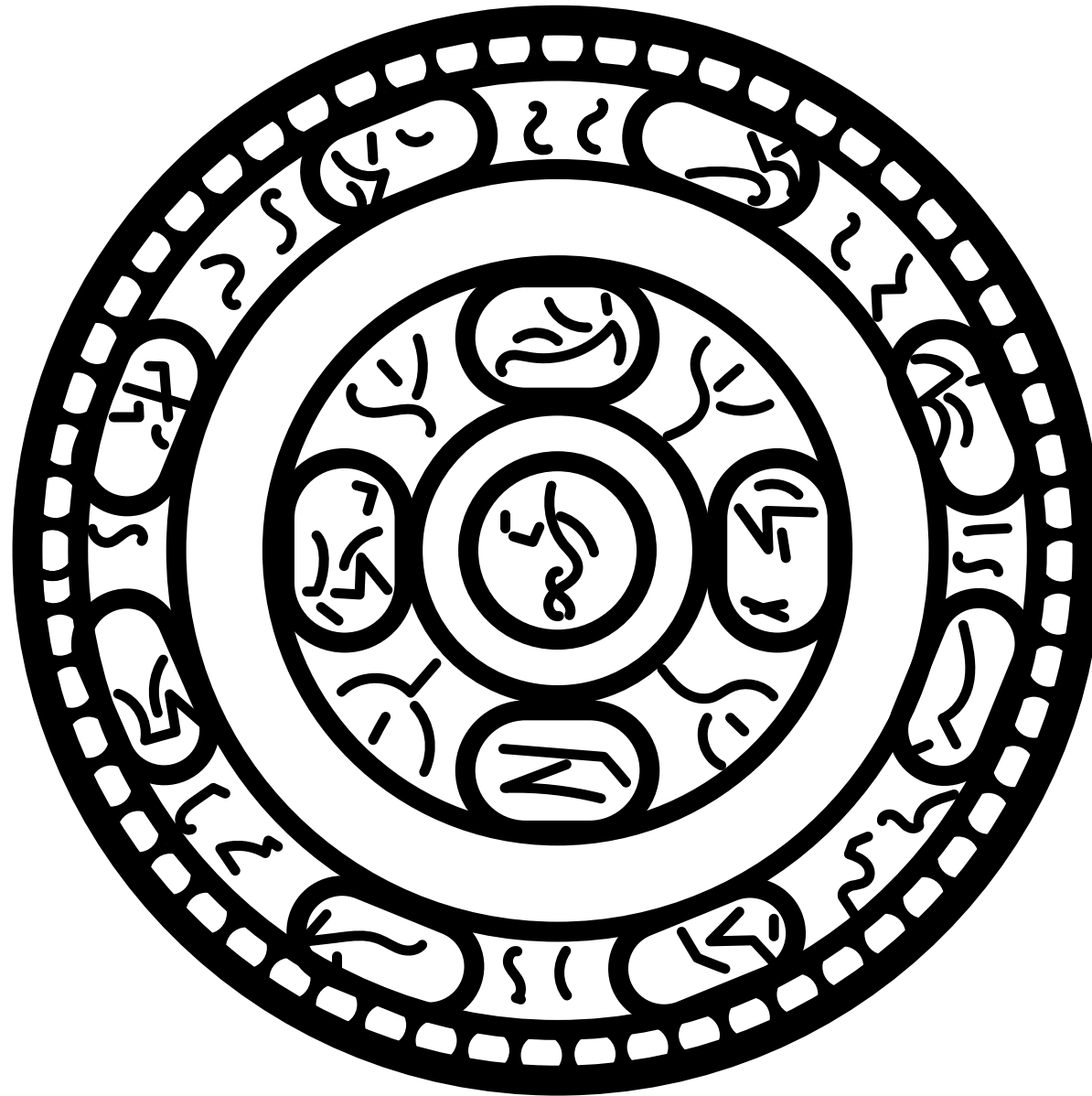


Gentlemen's Trophy



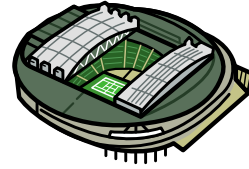


Ladies' Trophy









Wimbledon



Find



the words



hidden



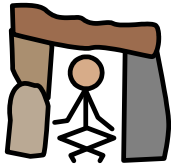
in the title



— — —



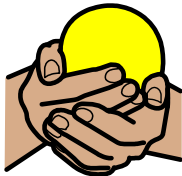
— — — —



— — —



— — — —



— — —



— — — —



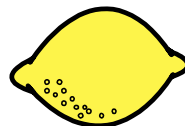
— — —



— — — —

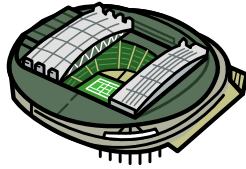


— — —



— — — — —





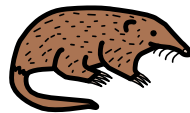
Wimbledon



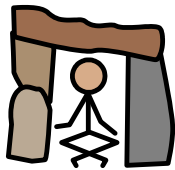
Answers



w i n



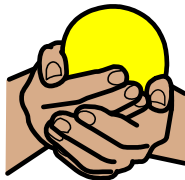
m o l e



d e n



b e n d



o w n

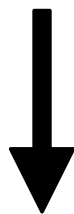


mile

m i l e



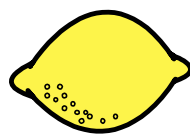
n o w



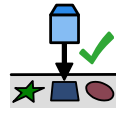
d o w n



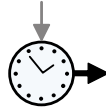
o w l



l e m o n



Tick the right answer



1. Tennis has been played since when?

14

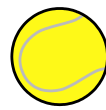
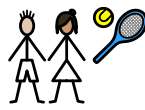
14th century

15

15th century

16

16th century



2. What do players use to hit the ball?



racquet



bat



club



3. How many Grand Slam tournaments are there?

3

three

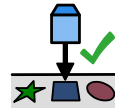
4

four

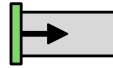
5

five





Tick the right answer

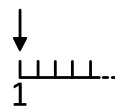


4. When did Wimbledon begin?

1867

1877

1887

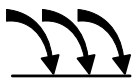


5. How many competitors played at the first Wimbledon?

100

1000

22



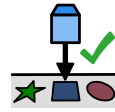
6. How many times can a ball bounce in wheelchair tennis?

1x
once

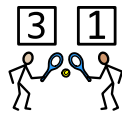
2x
twice

3x
3 times





Tick the right answer



7. Who helps keep the scores at Wimbledon?



referee



umpire



judge



8. What colour clothes are worn at Wimbledon?



white



blue



red



2025

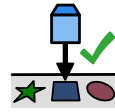
9. How much money did the champions receive in 2025?

£2^{000,000}
M
2 million

£3^{000,000}
M
3 million

£4^{000,000}
M
4 million





Tick the right answer



10. What does the Gentlemen's Singles champion receive?



silver salver



silver cup



gold medal



11. What does the Ladies' Singles champion receive?



gold medal



silver cup



silver salver



12. How many people watch Wimbledon on television?

100

hundreds

1000

thousands

000,000



M





millions





Answers

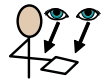
1.	 15th century
2.	 racquet
3.	4 four
4.	1877 1877
5.	22 22
6.	2x twice

7.	 umpire
8.	 white
9.	£3 ^{000,000} M £3 million
10.	 silver cup
11.	 silver salver
12.	^{000,000} M millions

True or False



Tick



to show



which statements

are



true



and

false



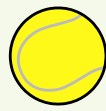
True



False



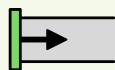
1. Tennis players use a racquet to hit a ball.



2. Wimbledon is a famous golf tournament.



3. Wimbledon is the world's oldest tennis tournament.

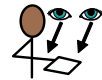


1977

4. Wimbledon began in 1977.



True or False



Tick to show which statements are true and false



True



False

5. In a doubles competition there are 3 people in each team.

6. In wheelchair tennis the ball can bounce 2x.

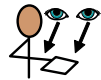
7. The first player to win 6 games wins the set.

8. The player who wins the fewest sets wins the match.

True or False



Tick



to show



which statements

are



true

and



false



True



False

9. Junior events are for players aged 8 - 12.



8

12

10. Wimbledon is the only Grand Slam event played on grass.



11. At Wimbledon all players must wear white clothing.



12. In 2025 there was £28 million of prize money.

2025

£28

000,000

M

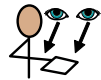
of



True or False



Tick



to show



which statements

are



true

and



false



True



False



13. The Gentlemen's Singles Champion receives a silver salver.



14. The Ladies' Singles Champion receives a silver cup.

000,000

M



15. Millions of people watch Wimbledon on television.













16. People like to eat strawberries and cream at Wimbledon.



True or False

1.	 True
2.	 False
3.	 True
4.	 False
5.	 False
6.	 True

7.	 True
8.	 False
9.	 False
10.	 True
11.	 True
12.	 False

13.	 False
14.	 False
15.	 True
16.	 True

Read and Draw

tennis court

tennis racquet

tennis ball

tennis net



Read and Draw

Gentlemen's Singles

Ladies' Singles

Gentlemen's Doubles

Ladies' Doubles



Read and Draw

tennis umpire

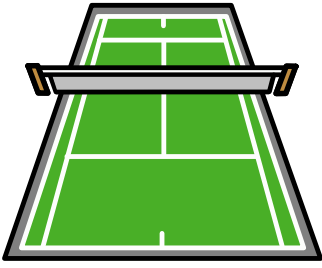
wheelchair tennis

silver cup

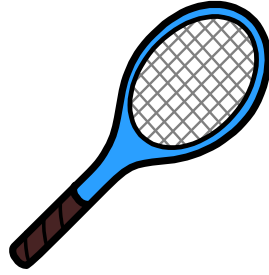
silver salver



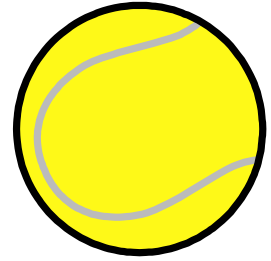
Read and Draw Guide



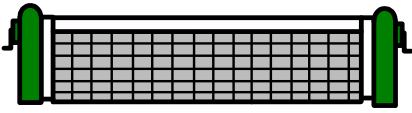
tennis court



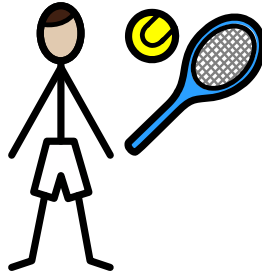
tennis racquet



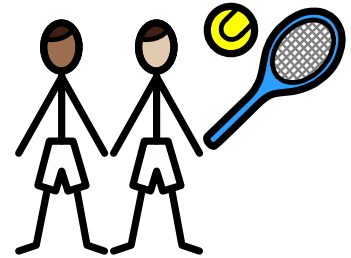
tennis ball



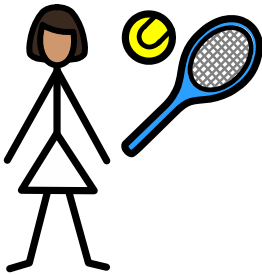
tennis net



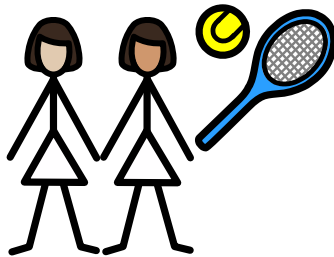
Gentlemen's Singles



Gentlemen's Doubles



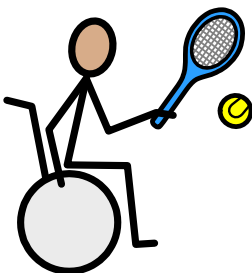
Ladies' Singles



Ladies' Doubles



tennis umpire



wheelchair tennis



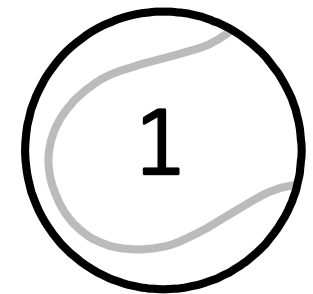
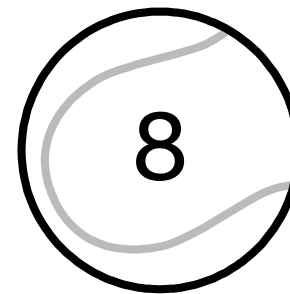
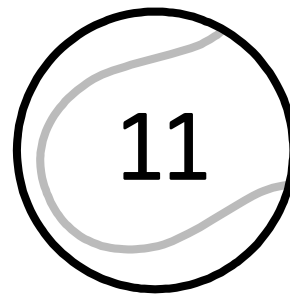
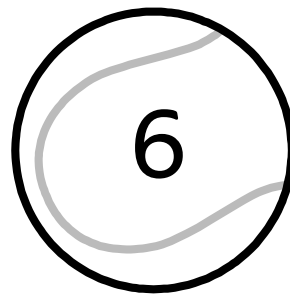
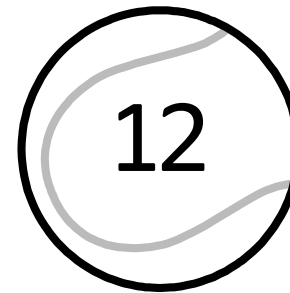
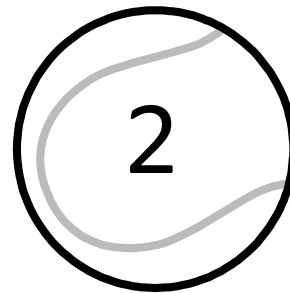
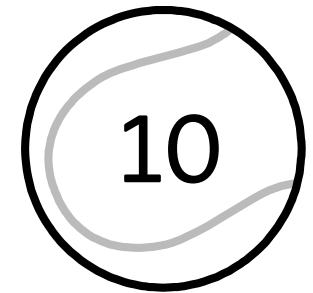
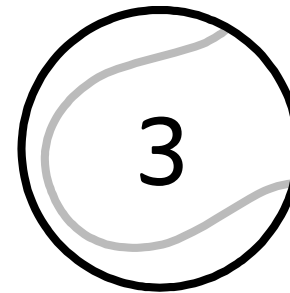
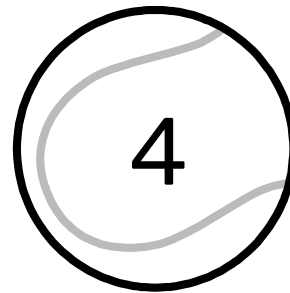
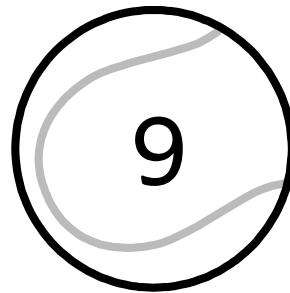
silver cup





silver salver


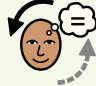



Roll Dice, Add and Colour



 2 
1. Roll 2 dice

+ 123
2. Add the numbers

 
3. Colour in the total

   
Who can colour in the most tennis balls?



Name:

Number the objects in order of size



Date:

This panel contains two tennis balls. The top row features a large yellow tennis ball on the left and a small yellow tennis ball on the right, each with a light green box below it. The bottom row features a medium-sized yellow tennis ball on the left and a small yellow tennis ball on the right, each with a light green box below it.

This panel contains four tennis rackets. The top row features a small blue tennis racket on the left and a large blue tennis racket on the right, each with a light green box below it. The bottom row features a large blue tennis racket on the left and a small blue tennis racket on the right, each with a light green box below it.

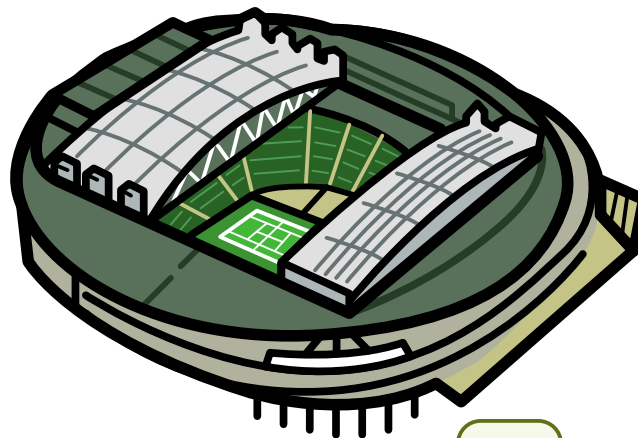
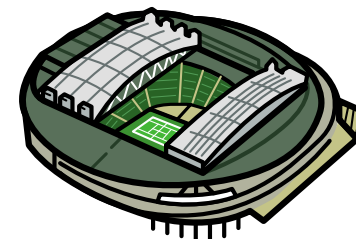
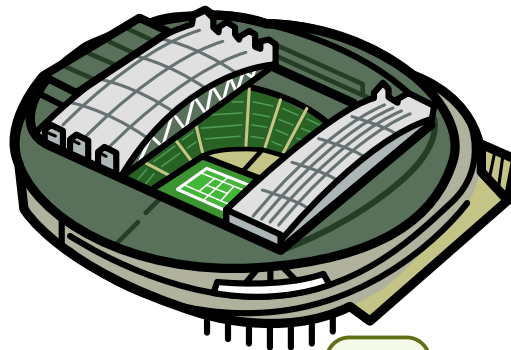


Name:

Number the objects in order of size



Date:



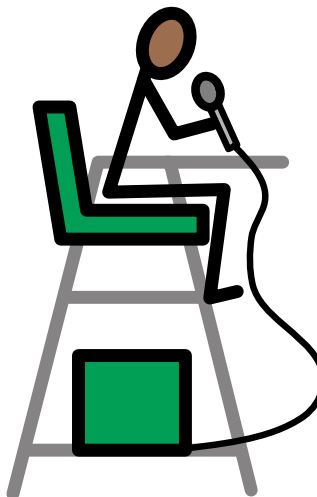
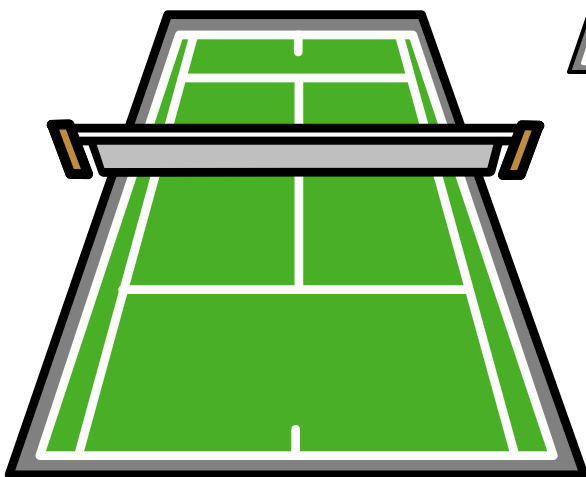
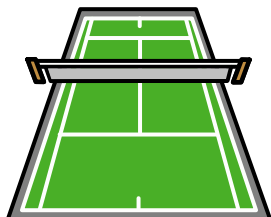
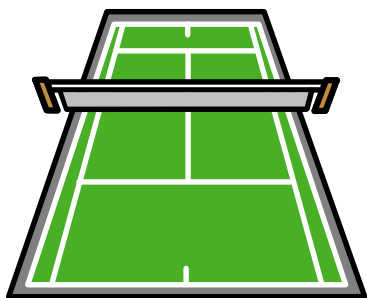


Number the objects in order of size



Name:

Date:





Name:

Number the objects in order of size



Date:

This panel contains four golden trophies of varying sizes. Each trophy has a central circular emblem and two handles. To the right of each trophy is a light green square box for writing a number. The trophies are arranged as follows: a small one in the top left, a medium one in the top right, a large one in the bottom left, and a medium-small one in the bottom right.

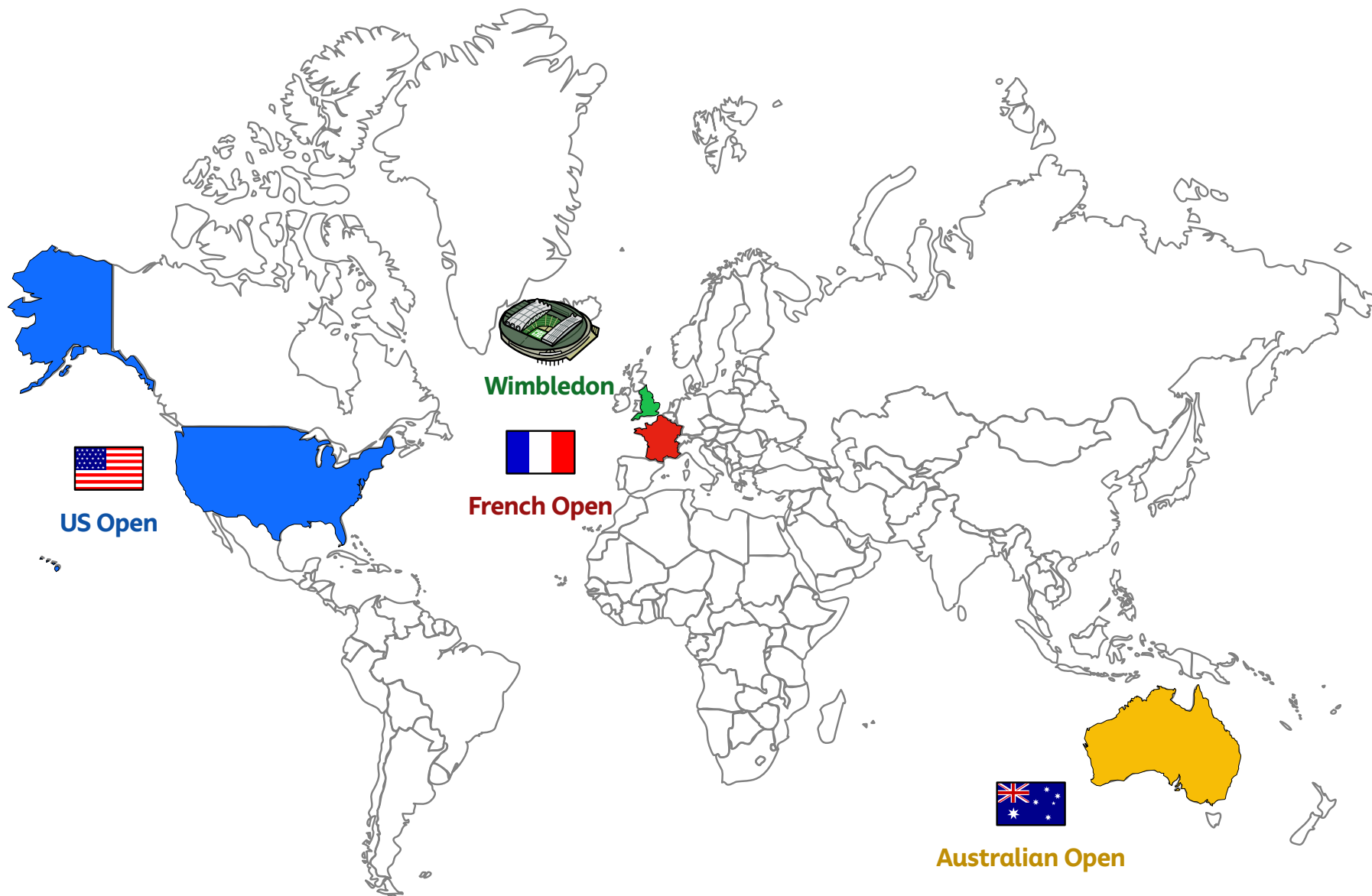
This panel contains four golden coins of varying sizes. Each coin has a central emblem with Arabic calligraphy and a decorative border. To the right of each coin is a light green square box for writing a number. The coins are arranged as follows: a large one in the top left, a medium one in the top right, a small one in the bottom left, and a medium-small one in the bottom right.





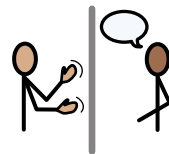
Tennis Grand Slams

World Map





Wimbledon



Barrier Game

Use this Wimbledon barrier game to help learners develop their speaking and listening skills.

This game can also be used to help learners explore prepositions and relative positions.

This game is for 2 players.

Each player has a background picture and a set of 8 picture cards.

The players sit opposite each other, with a barrier set up between them so they cannot see each other's pictures.

One player places a picture card onto the background scene and describes what they have placed and where they have placed it e.g. *"The umpire is below the net on the left."*

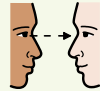
The other player listens and follows the instructions to place their own picture card in a matching position.

Players continue until all their picture cards have been placed onto the background.

When finished, players remove the barrier and compare their pictures and discuss why their pictures do or do not look the same. Then the players can swap roles and play again.



2



1. Two players sit opposite each other, each with a background picture.



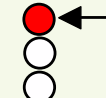
speak



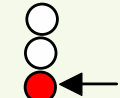
listen



2. Players use a barrier so they can't see each other's background.



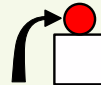
top



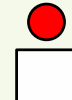
bottom



1



3. Player 1 places picture cards onto their background.



above



on



4. The player must describe where they have placed them.



below



under



5. The other player tries to place their picture card in a matching position.



between



in



6. Listen and speak carefully, and have fun!

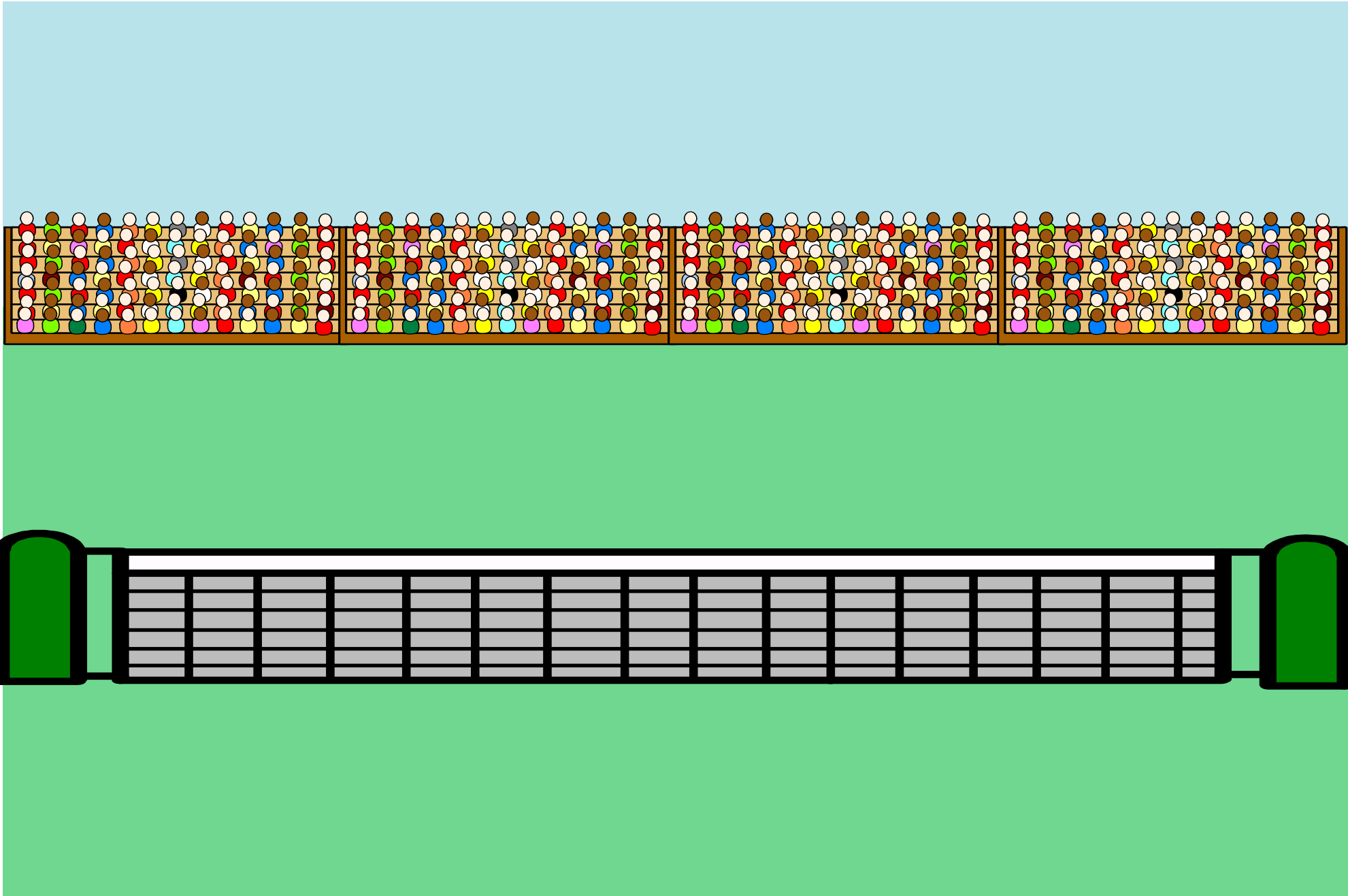


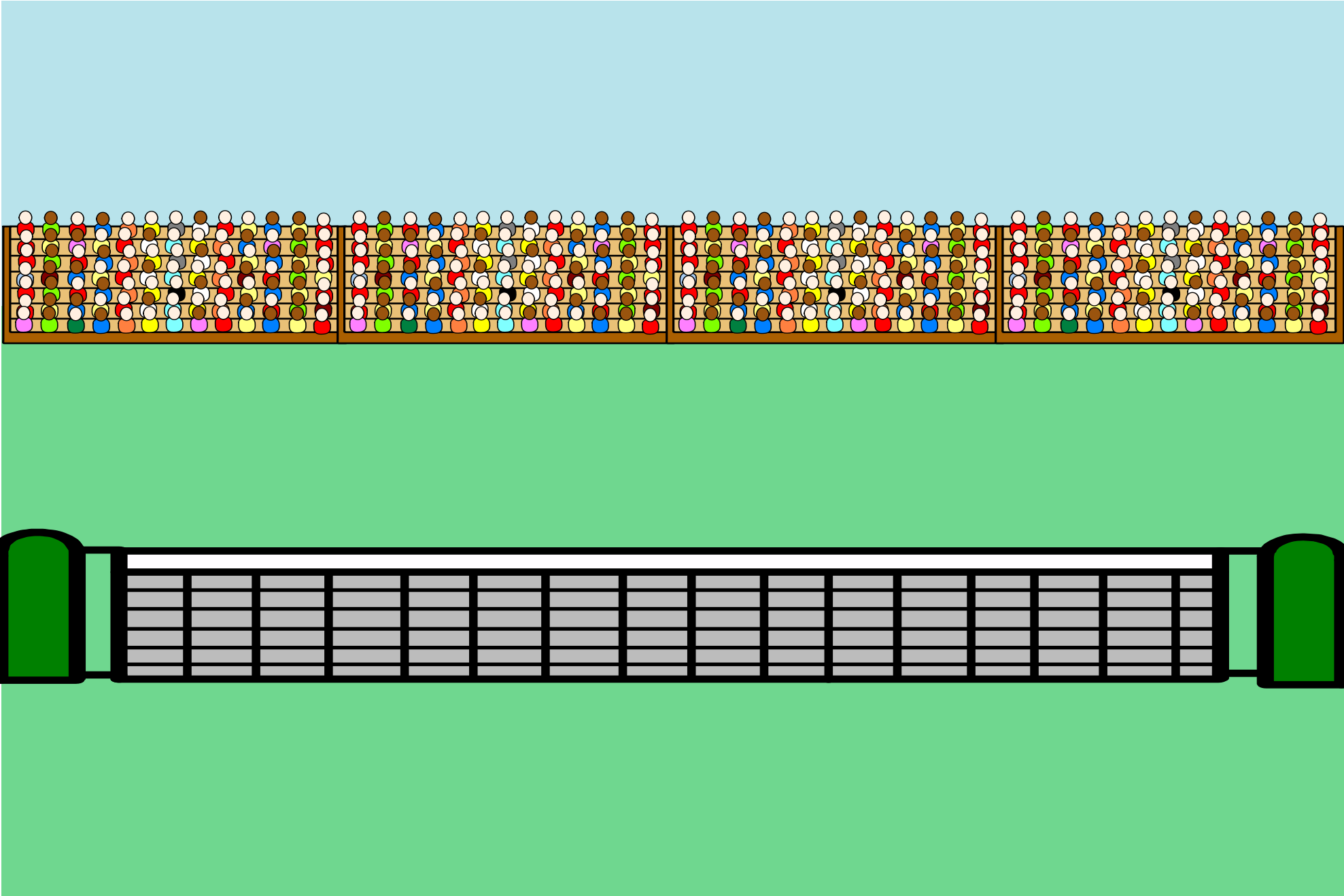
left



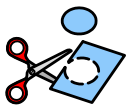
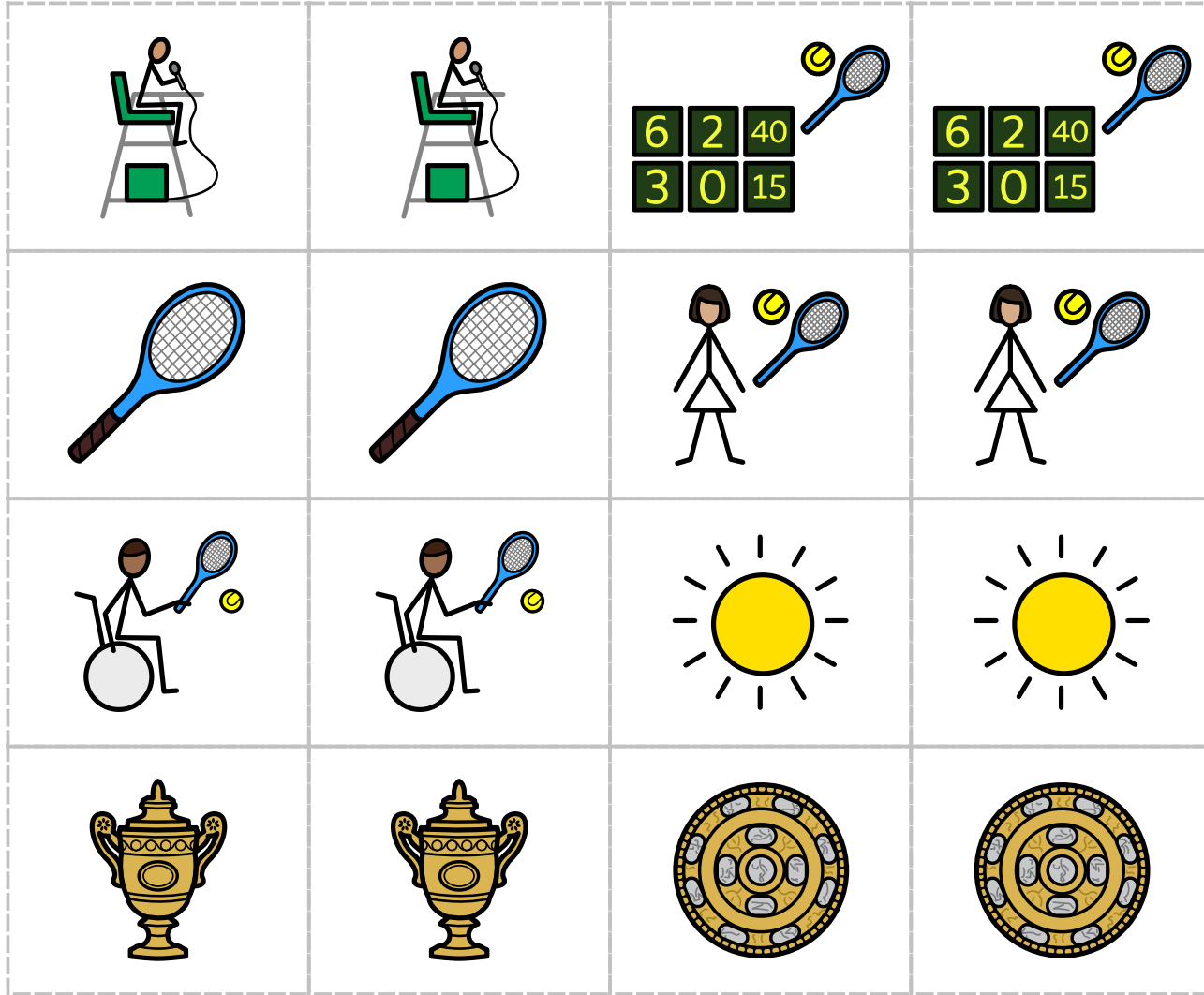
right







Cut out the picture cards to play the Tennis Barrier Game



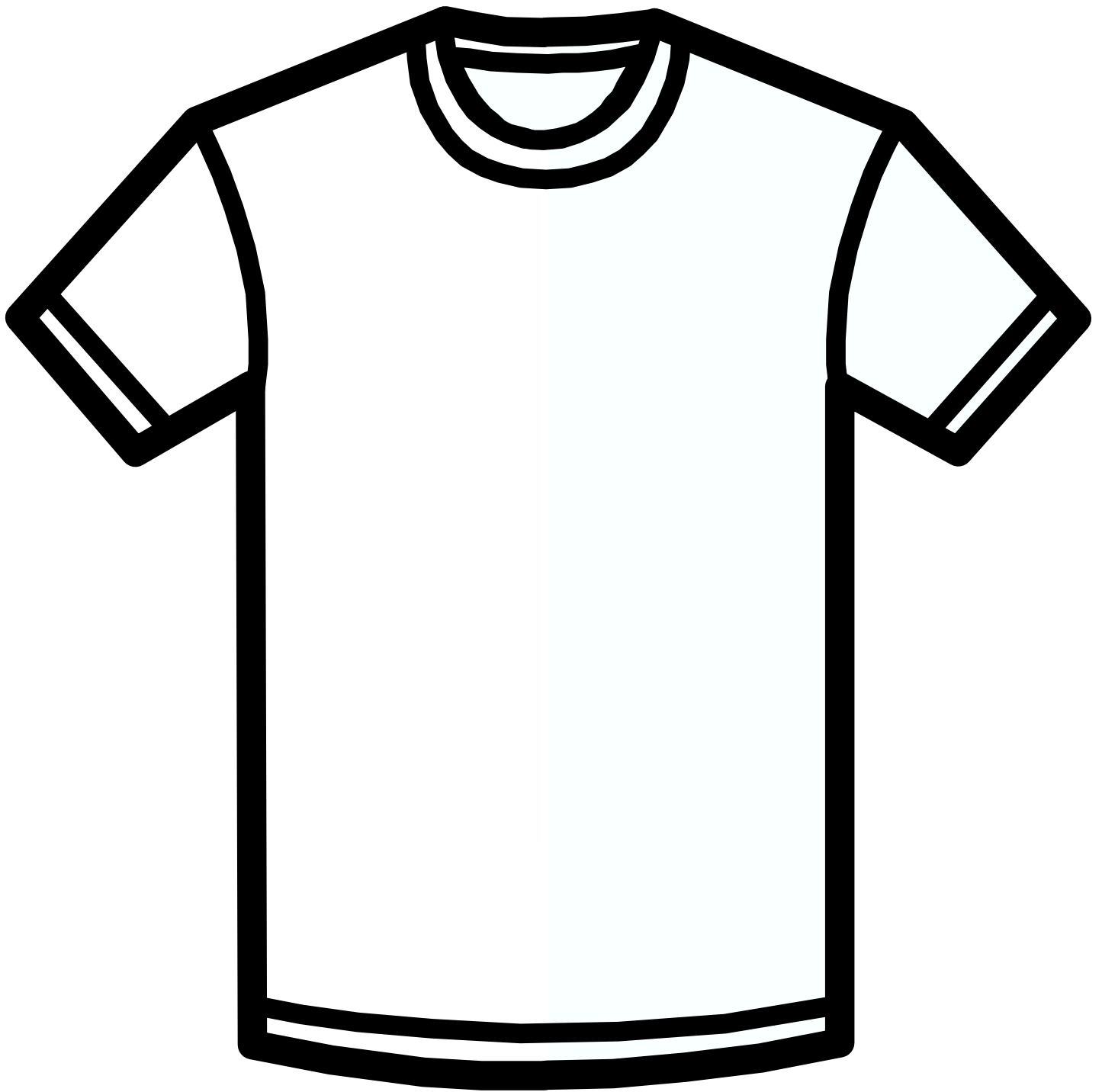
Design a Wimbledon Tennis Trophy



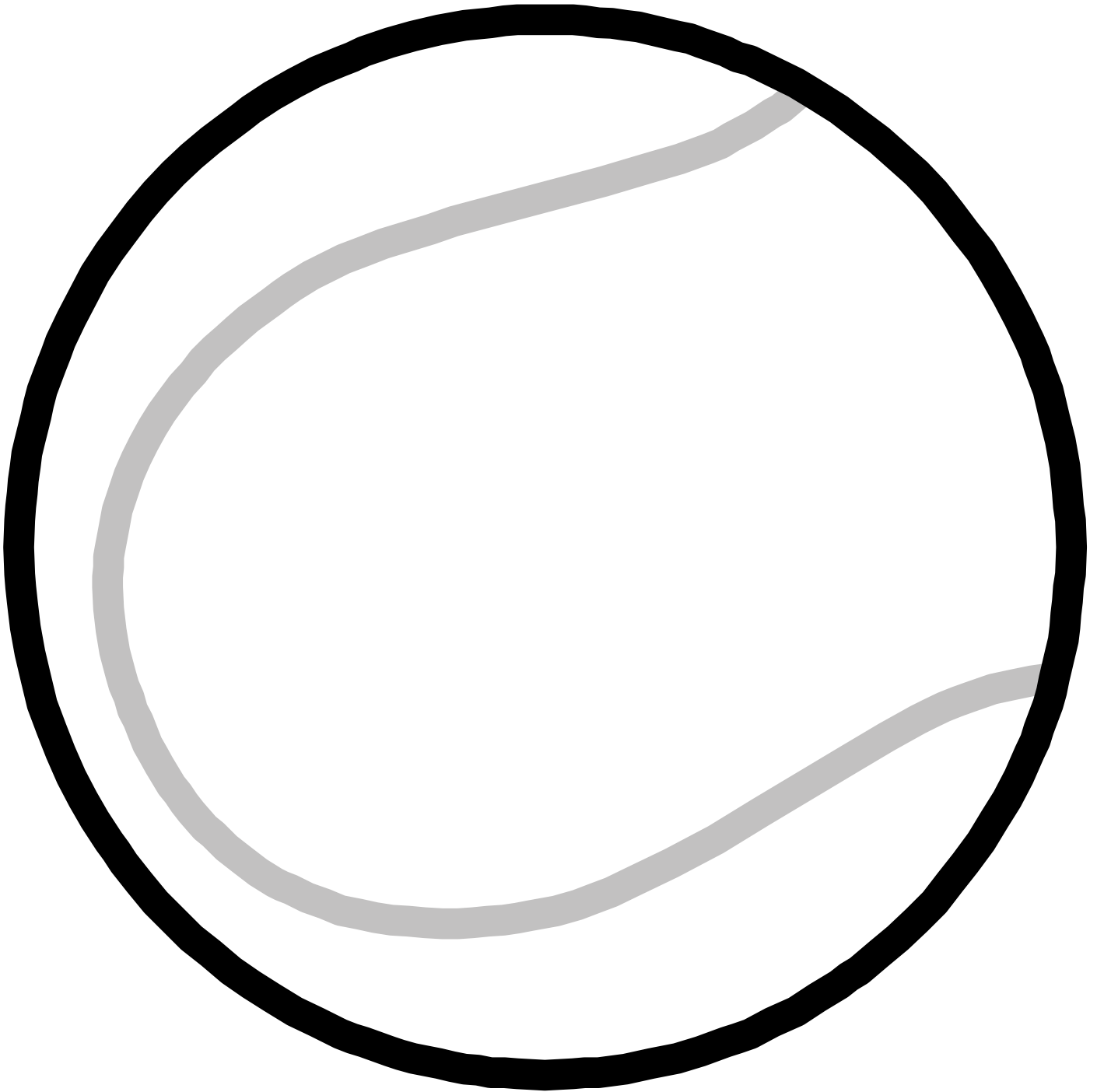
Design a Wimbledon Tennis Racquet



Design a Wimbledon Tennis T-Shirt



Design a Wimbledon Tennis Ball





Wordsearch



w u b a l l k w c g

i m i x e d m h z e

m y i u g o p e e t

b f x d r u l e i s

l l u f a b h l c i

e x m r c l k c j n

d p p c q e y h b g

o d i t u s n a s l

n s r t e n n i s e

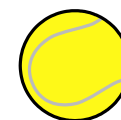
j n e t t q t r s s



wimbledon



tennis



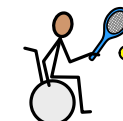
ball



racquet



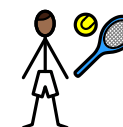
net



wheelchair



umpire



singles



doubles



mixed



Wordsearch - Initial Letters



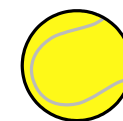
w	u	b	a	l	l	k	w	c	g
i	m	i	x	e	d	m	h	z	e
m	y	i	u	g	o	p	e	e	t
b	f	x	d	r	u	l	e	i	s
l	l	u	f	a	b	h	l	c	i
e	x	m	r	c	l	k	c	j	n
d	p	p	c	q	e	y	h	b	g
o	d	i	t	u	s	n	a	s	l
n	s	r	t	e	n	n	i	s	e
j	n	e	t	t	q	t	r	s	s



wimbledon



tennis



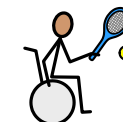
ball



racquet



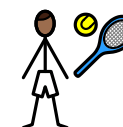
net



wheelchair



umpire



singles



doubles



mixed



Wordsearch - Answers



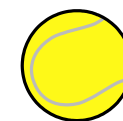
w	u	b	a	l	l	k	w	c	g
i	m	i	x	e	d	m	h	z	e
m	y	i	u	g	o	p	e	e	t
b	f	x	d	r	u	l	e	i	s
l	l	u	f	a	b	h	l	c	i
e	x	m	r	c	l	k	c	j	n
d	p	p	c	q	e	y	h	b	g
o	d	i	t	u	s	n	a	s	l
n	s	r	t	e	n	n	i	s	e
j	n	e	t	t	q	t	r	s	s



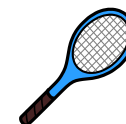
wimbledon



tennis



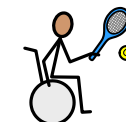
ball



racquet



net



wheelchair



umpire



singles



doubles



mixed