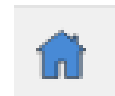
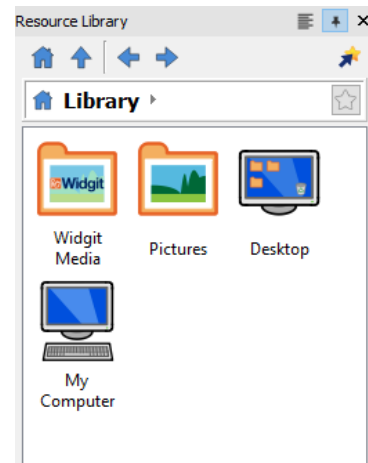




## Using the Resource Library

### Access a Range of Images to Use in Your Documents

The **Resource Library** is your go-to place for swiftly accessing the **Widgit Media** file and any of your own images on your PC.

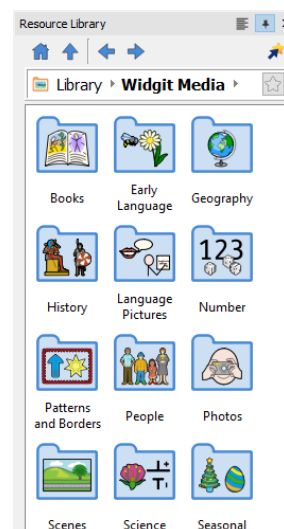


You can return to this area any time by clicking on the **Home** button:

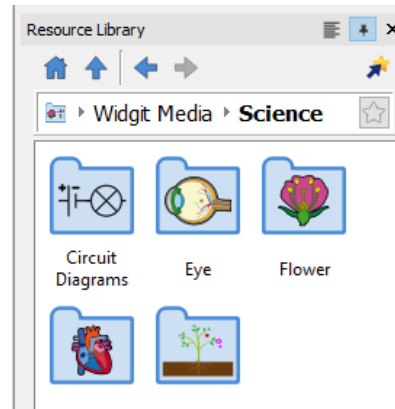
### Widgit Media

**Widgit Media** is a large collection of graphics included with InPrint 3. They cover a range of subjects and can be used for building up scenes, decorating pages and creating resources.

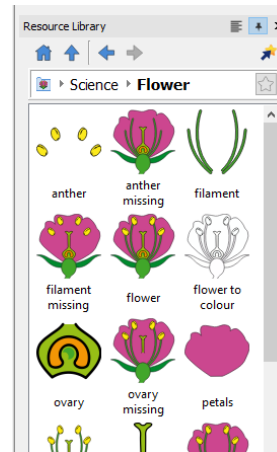
1. Click on the **Widgit Media Folder** to open. You will see a selection of folders to choose from.



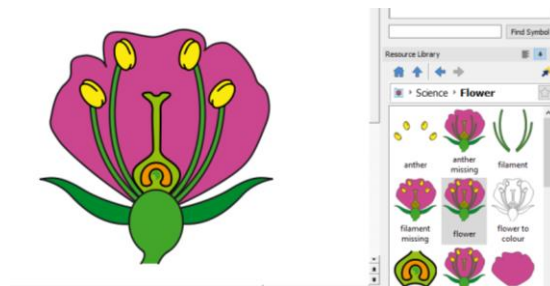
2. Click on your chosen folder to access the sub-folders contained within.



3. Open any sub-folders to access the images themselves.

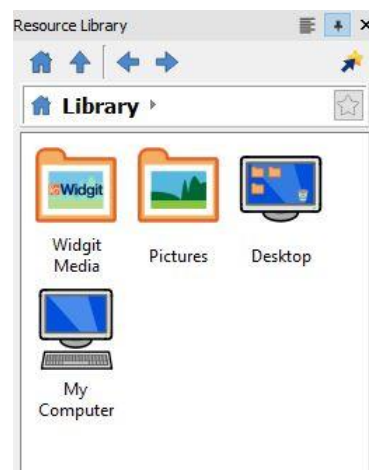


4. Click and Drag the images into the page.

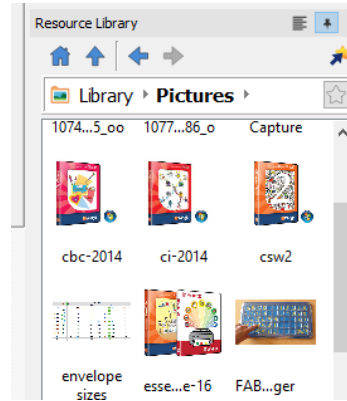


## Pictures on Your Computer

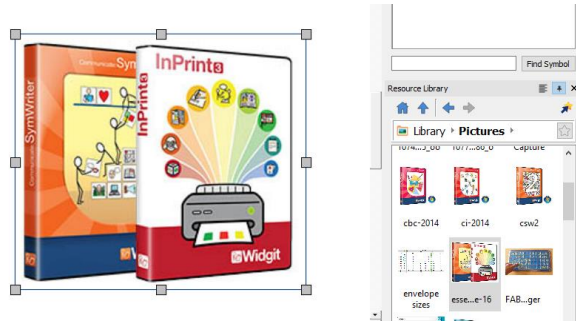
1. Select the location of your images. You can choose your "Pictures" folder, your Desktop, or "My Computer"



2. Click on your chosen location to access the images or sub-folders contained within.



3. Click and Drag the images into the page.



4. If your original image was large, you may need to reduce it. Do this by clicking on image to select it, and dragging the corners in, or by using the **Image Size Menu** (see guide on editing images).

