

### **Integration with SymWriter Online**

Create, save and share symbol-supported documents in the cloud.

### **New specialist Language Pictures**

Support language development using a new collection of graphics that help convey meaning.

### **New default font: FS Me**

New highly accessible default font.

### **Format Painter**

Copy and paste formatting properties across Documents and Environments.

### **Set symbol defaults**

Configure your personal symbol preferences, or stop certain symbols from appearing in your document.

### **New method for dropping in graphics**

Insert graphics into your document with greater control and precision.

### **Soft returns**

Change the way you structure your writing.

### **More symbol control**

See the meaning of every word combination as it is typed.

### **Double side panels**

Configure your SymWriter layout to suit how you would like to work.

### **Split cells**

More freedom when editing Grids.

### **Resize individual rows and columns**

Modify your Grids and Cells with drag points to create the exact layout you want.

### **Copy actions across multiple Cells**

Apply Cell actions across as many items as you like.

### **Tab between Cells**

Move from Cell to Cell more quickly.

### **Recently used actions list**

Easy access to your most recently used actions.

### **Session defaults for Grids and Stages**

Automatically store your preferences for your Environment's appearance.

### **New switch scanning features**

Set up a personalised configuration for Switch users.

### **New launcher**

Create different interfaces to customise the program for your users.

### **New Wordlist Manager**

Manage and modify how your symbols and wordlists work.

# Integration with SymWriter Online

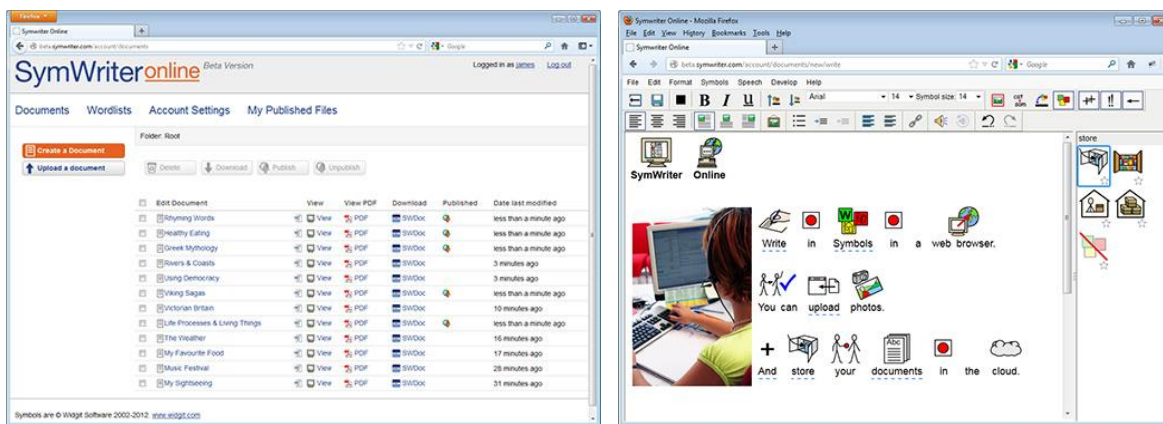
*Create, save and share symbol-supported documents in the cloud.*

## What is SymWriter Online?

SymWriter Online allows you to create, save and share symbol-supported documents in the cloud. **SymWriter 2** and **SymWriter Online** documents are completely compatible for total flexibility.

- Store and manage your documents online
- Access your work from anywhere with an internet connection
- Create new documents
- Upload and download documents to work with SymWriter 2.
- Make documents public to share with anyone

SymWriter Online contains all of the document writing features of SymWriter 2.



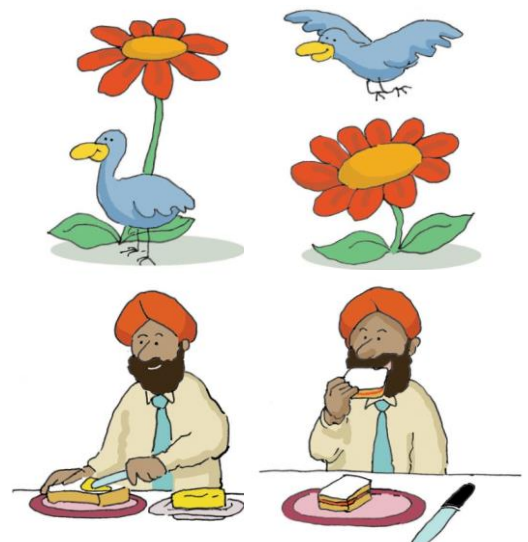
## New specialist Language Pictures

*Support language development using a new collection of graphics that help convey meaning.*

SymWriter now features an additional 339 graphics that can be used to support language development. The graphics can be used to help convey the meaning of: prepositions, opposites, sequences, and sentences such as (subject – verb – objects).

These graphics can be accessed from the Language Pictures folder in the Graphics Browser and they also feature in the SymWriter example files: Picture 1 – 5.

Images in the Language Pictures set were developed by Alan Birch ([alanbirch@blueyonder.co.uk](mailto:alanbirch@blueyonder.co.uk)) and included with permission from Sandwell and West Birmingham hospitals NHS Trust.

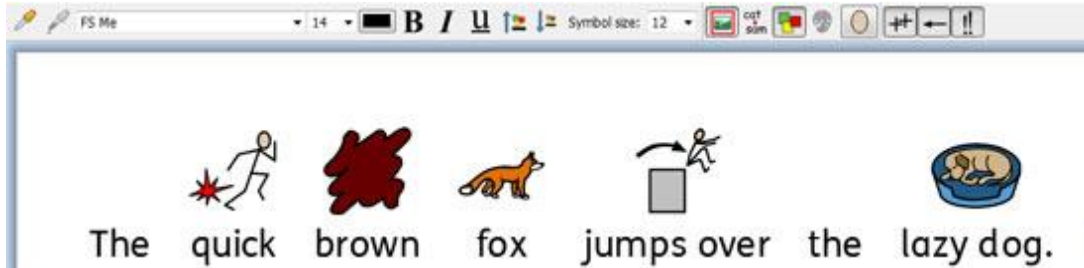


---

## New default font: FS Me

### *New highly accessible default font*

SymWriter now features a default font that was designed by Fontsmith, and endorsed by Mencap to aid legibility for those with learning disabilities: FS Me.



You can find out more about FS Me at: [www.fontsmith.com/projects/portfolio/mencap-fs-me.cfm](http://www.fontsmith.com/projects/portfolio/mencap-fs-me.cfm)

**NOTE: If you want to use the FS Me font in programs other than SymWriter 2, you will need to purchase a license for the font.**

---

## Format Painter

### *Copy and paste formatting properties across Documents and Environments.*



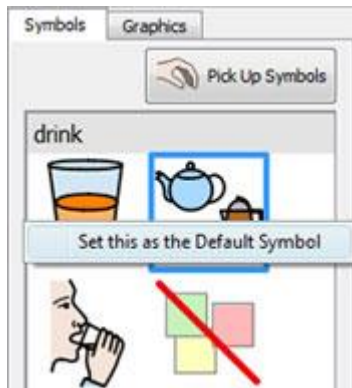
The Format Painter is a new tool that can be used to copy the formatting properties (font, colours, symbol size, text size etc..) from any content in your Document or Environment. Using the Format Painter, you can easily ensure consistent formatting throughout your writing and grids.



---

## Setting symbol defaults

*Configure your personal symbol preferences, or stop certain symbols from appearing in your document altogether.*



In SymWriter 2, you can update your symbol preferences straight from the Symbol Chooser. If you would like a specific symbol to appear whenever you type a particular word, simply right-click and set it as the default. The next time you type the word, SymWriter will detect if it is being used in the same way (e.g. as a noun or a verb) and show your chosen symbol.

If you don't want a symbol to appear at all for a particular word, set the default symbol to 'No symbol'. This can be useful for people who are new to symbols where abstract symbols like 'a', 'the' and 'but' could be a distraction.

---

## Soft returns

*Change the way you structure your writing.*

You will now be able to use soft returns (Shift + Enter) in your writing.

If, for example, you would like to use a paragraph graphic and start every new sentence on a new line, a soft return will enable you to do so without the next sentence starting on a new paragraph (underneath the graphic).



Anubis is the Greek name for a jackal-headed god.  
He is associated with mummification and the afterlife in Egyptian mythology.  
In the ancient Egyptian language, Anubis is known as Inpu.  
The oldest known mention of Anubis is in the Old Kingdom pyramid texts.  
He is associated with the burial of the king.  
He was the most important god of the Dead but was replaced by Osiris.

---

## New method for dropping in graphics

*Insert graphics into your document with greater control and precision.*

Whether you are adding graphics, symbols or images from your computer or the Internet; you will now have greater control over where they can be inserted.

---

### Version 1



In SymWriter 1, you would have to decide whether you were inserting a graphic or replacing a symbol and click the appropriate button. Then, if you were inserting a graphic, the only indication of where the graphic might appear in the document would be the thumbnail attached to the mouse cursor.

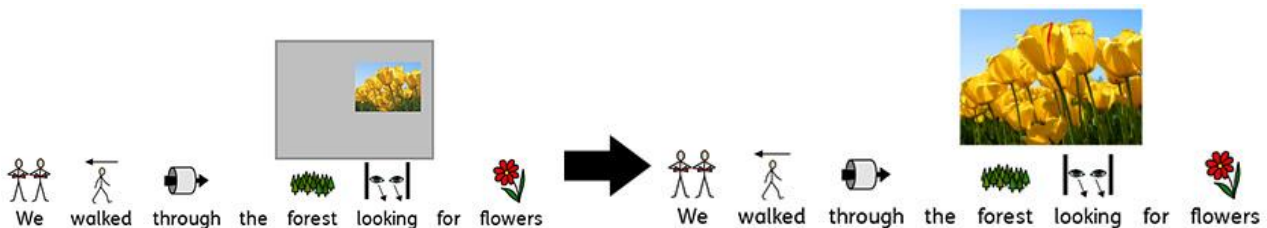


---

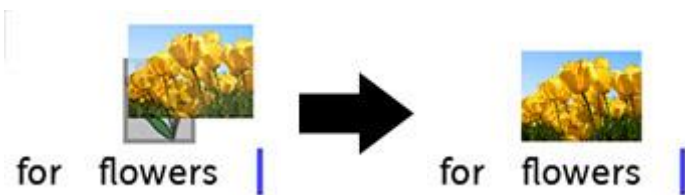
### Version 2

In SymWriter 2, you can simply select a graphic or symbol from the Symbol Chooser, then use the grey positioning box that appears to accurately insert the image wherever you want it to appear in your document.

**Drop over an empty space - the image becomes an illustration**



**Drop over a symbol - the image replaces the symbol**



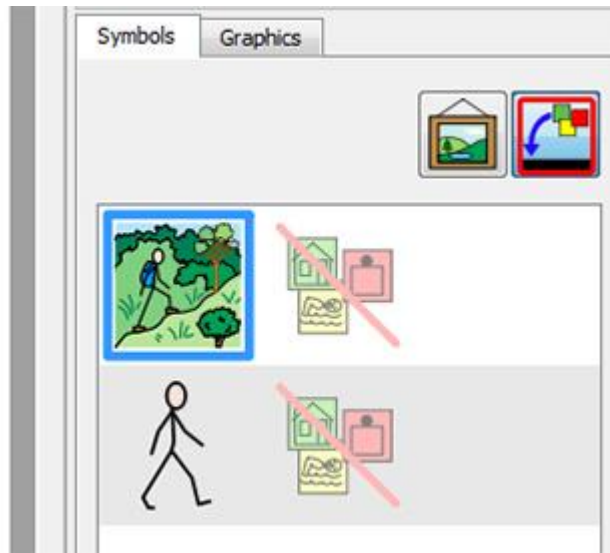
## More symbol control

*See the meaning of every word combination as it is typed.*

The Symbol Chooser will detect all the potential symbols associated with a word or group of words as they are typed, and will offer all possible combinations of symbolisation.

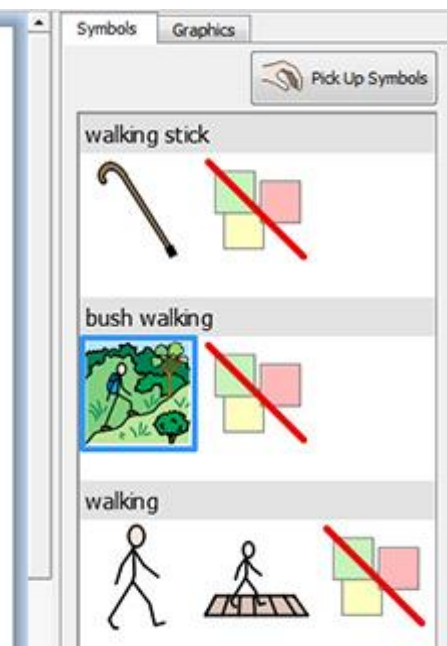
### Original SymWriter:

(no option for 'walking stick')



### SymWriter 2:

(all options with labels)



## Double side panels

*Configure your SymWriter layout to suit how you would like to work.*

You can now maximise the space at the side of the Document or Environment by choosing to show a Double Panel that will display both the Symbols tab and Graphics tab simultaneously.

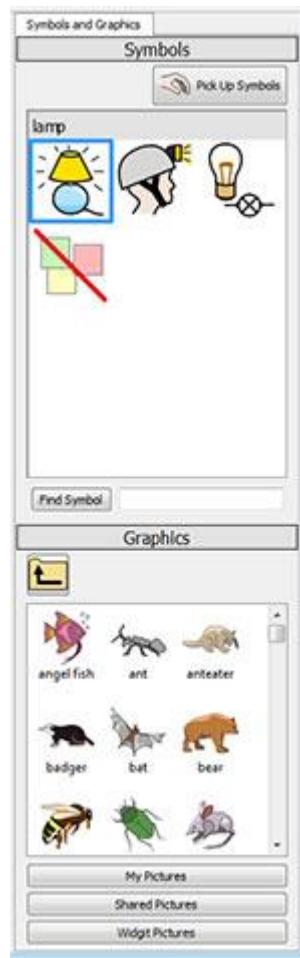
### Graphics Panel



### Symbols Panel



### Double Panel

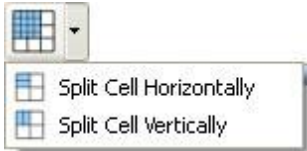


---

## Split Cells

### *More freedom when editing Grids.*

In SymWriter 1, the options for splitting cells in Design Mode were limited. Now when you are creating Environments, you can split any Cell or multiple Cells at once. You can split Cells vertically or horizontally, regardless of whether they have previously been merged. The split Cells will inherit any formatting properties that have been applied to the Cell or Cells they were created from.



**Original Grid**



**Split Cell horizontally**



**Split Cell vertically**



---

## Resize individual rows and columns

### *Modify your Grids and Cells with drag points to create the exact layout you want.*

You can quickly customise the size of specific Cells in Grids while designing an Environment. This can be achieved by simply highlighting a Cell (or Cells) and then using the drag points around the border of the selection.

This can be useful if you would like a Grid featuring sentence starters in the first column of cells followed by single word sentence closers.

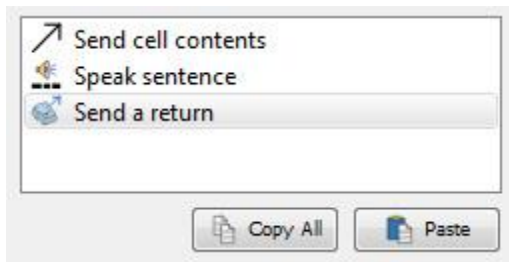




---

## Copy actions across multiple cells

*Apply Cell actions across as many items as you like.*



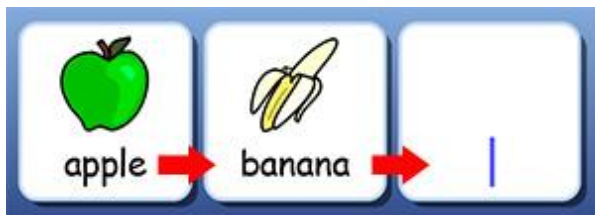
You can copy the assigned Actions from any Cell or Button for the purpose of adding them to others. This is particularly useful when you have many Cells in an Environment that you wish to function in the same way.

---

## Tab between Cells

*Move from Cell to Cell more quickly.*

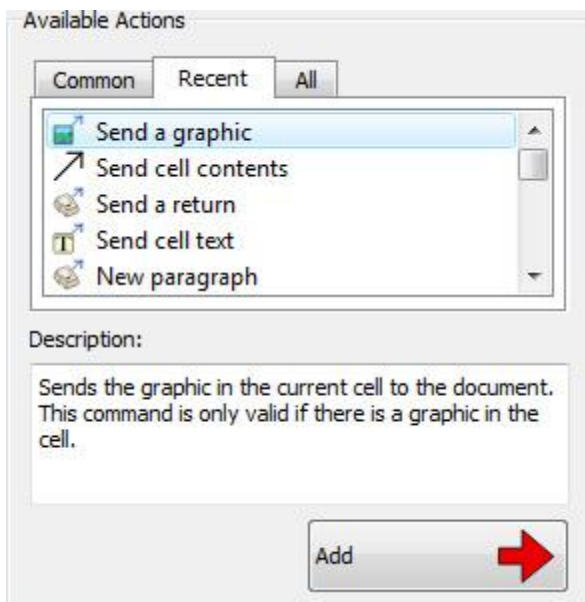
When typing content into Cells, you can use the Tab key on your keyboard to swiftly move from one Cell to the next, from left to right. If you want to move in the reverse direction, you can hold the Shift key and press Tab.



---

## Recently used actions list

*Easy access to your most recently used actions.*



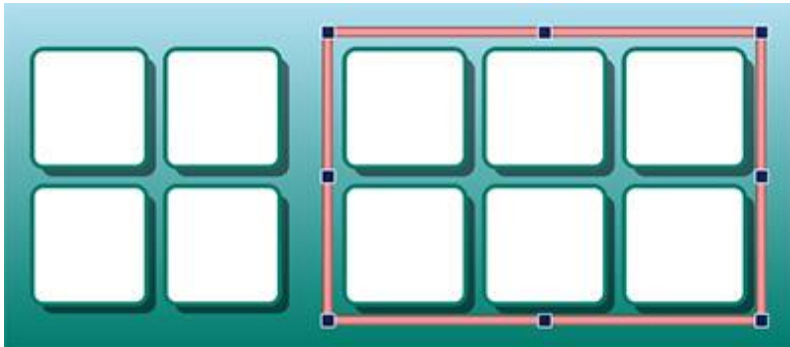
SymWriter 2 keeps a list of your most recently used actions, so you have quick and easy access to them when creating environments.

---

## Session defaults for Grids and Stages

*Automatically store your preferences for your Environment's appearance.*

Whilst making an Environment, SymWriter will remember your Grid and Stage properties, such as colours and borders, so that when you make the next item the properties will be the same. This makes it easy to create consistent, good-looking Environments.



---

## New switch scanning features

*Set up a personalised configuration for Switch users.*

There are now more features for switch users, including directional scan mode, the ability to use the mouse as a switch and customisable settings for auditory scans, automatic scan speeds and coloured indicators.

---

## New launcher

*Create different interfaces to customise the program for your users.*



The new launcher presents users with easy to navigate options for how they intend to use SymWriter.

Users can set up a completely personalised SymWriter account for themselves with an accompanying user icon of their choice.

# New Wordlist Manager

## *Manage and modify how your symbols and wordlists work.*

The Wordlist Manager provides an opportunity to manage and create your own wordlists. A wordlist is a file that links words with graphics. If you type "cat" in Symbol Mode while using SymWriter, the loaded wordlist will automatically display the graphic associated with the word "cat".

By using the Wordlist Manager, you will be able to refine the way that SymWriter works; customising wordlists for your particular activity or personal vocabulary.

